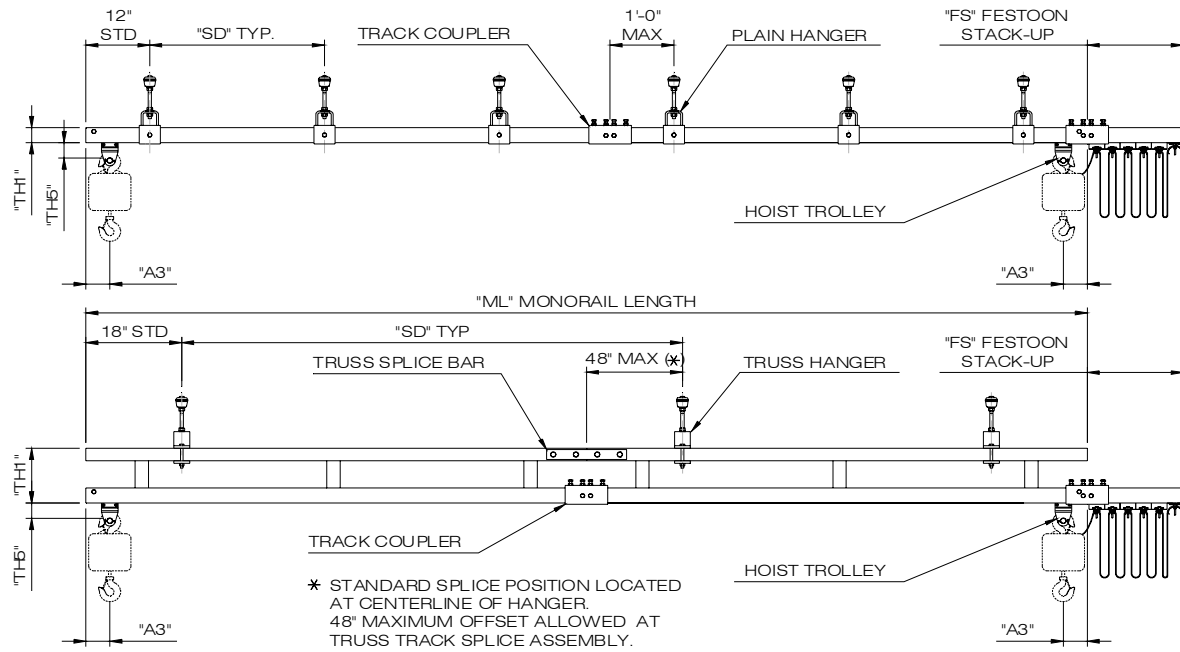


# CEILING MOUNTED MONORAILS

# DIMENSIONAL DATA



Weights & Dimensions are approximate and may change without notice

## 2000# CAPACITY

Monorail Length (M L)	MODEL NUMBER CAP M RL SD	Track Series	HOIST-TROLLEY DIMENSIONS		MONORAIL DIMENSIONS			TOTAL HANGER POINTS
			TH5	A3	SD (Max)	TH1	FS	
11' - 6	2000 - M - 11 - 06	2000	4 1/8"	6 5/8"	6'-0	4 3/8"	12"	3
	2000 - M - 11 - 20				20'-0	12"		2
23' - 0	2000 - M - 23 - 06				6'-0	4 3/8"	18"	5
	2000 - M - 23 - 20				20'-0	12"		2
28' - 0	2000 - M - 28 - 25				25'-0	12"	2	
33' - 0	2000 - M - 33 - 06				6'-0	4 3/8"	24"	7
	2000 - M - 33 - 20				20'-0	12"		3
33' - 0	2000 - M - 33 - 30				30'-0	12"	2	
43' - 0	2000 - M - 43 - 06				6'-0	4 3/8"	36"	8
	2000 - M - 43 - 20				20'-0	12"		3
53' - 0	2000 - M - 53 - 06				6'-0	4 3/8"	54"	10
	2000 - M - 53 - 20				20'-0	12"		4
	2000 - M - 53 - 25				25'-0	12"		3
63' - 0	2000 - M - 63 - 06				6'-0	4 3/8"	63"	12
	2000 - M - 63 - 20				20'-0	12"		4
63' - 0	2000 - M - 63 - 30				30'-0	12"	3	
78' - 0	2000 - M - 78 - 25	25'-0	12"	4				
83' - 0	2000 - M - 83 - 06	6'-0	4 3/8"	54"	15			
	2000 - M - 83 - 20	20'-0	12"		5			
93' - 0	2000 - M - 93 - 30	30'-0	12"	4				
	2000 - M - 103 - 06	6'-0	4 3/8"	63"	19			
103' - 0	2000 - M - 103 - 20	20'-0	12"		6			
	2000 - M - 103 - 25	25'-0	12"		5			
123' - 0	2000 - M - 123 - 30	30'-0	12"	5				

(01-01-07)