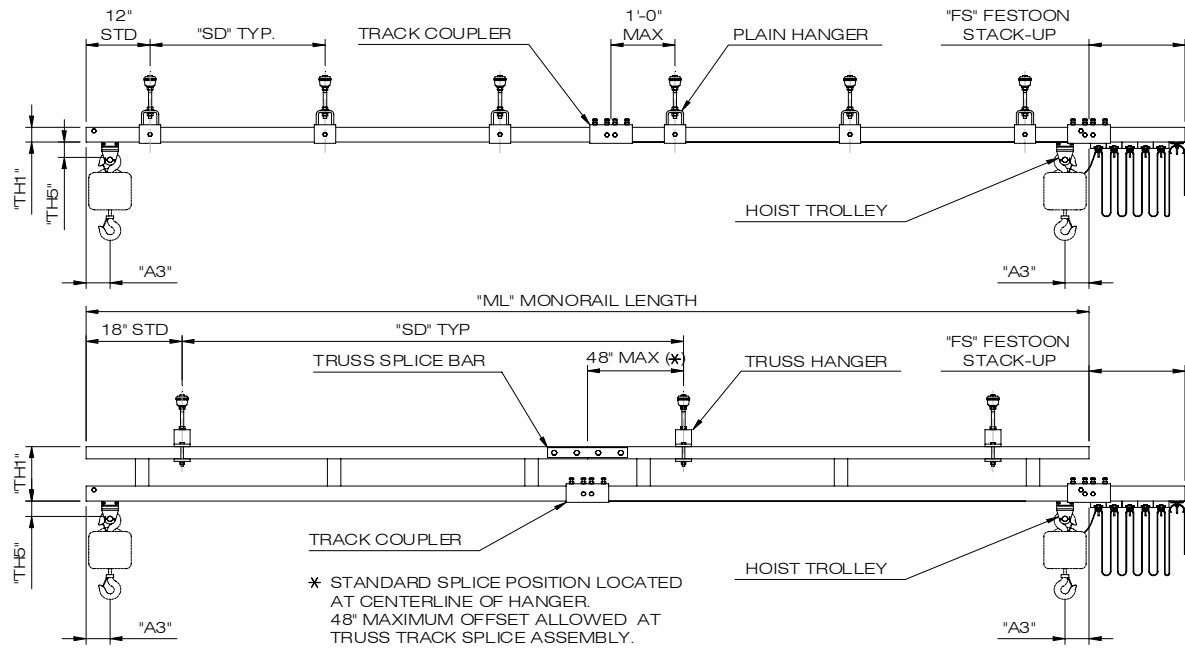


CEILING MOUNTED MONORAILS

DIMENSIONAL DATA



Weights & Dimensions are approximate and may change without notice

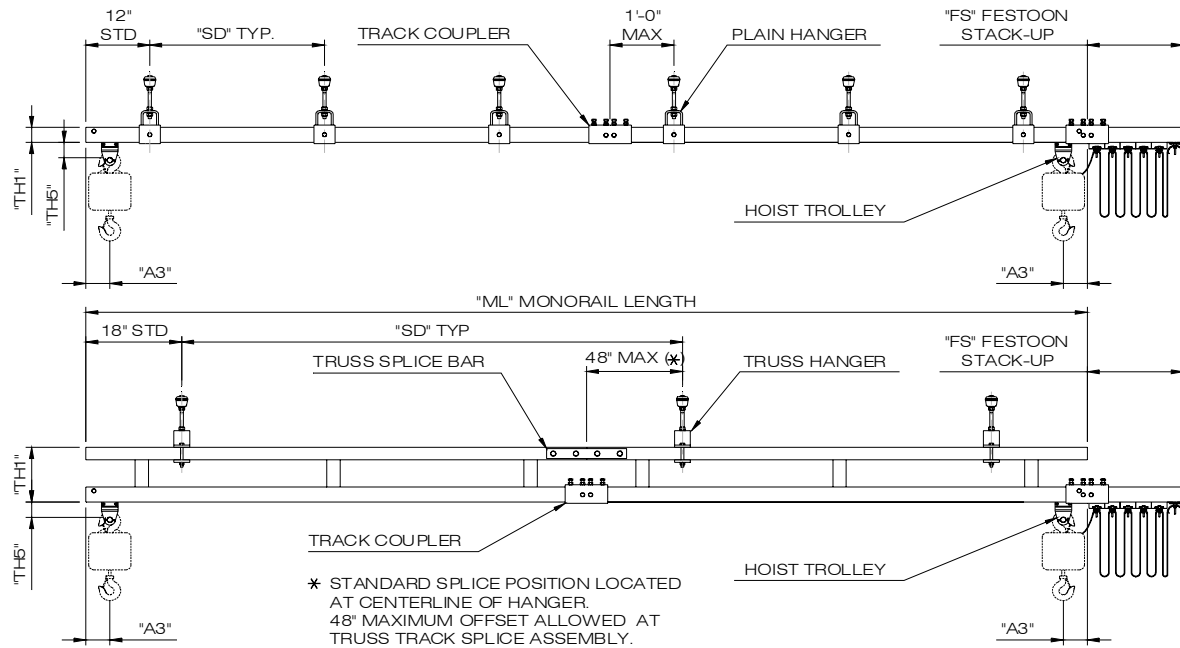
250# CAPACITY

TEMPORARILY USE 500# CAPACITY DATA FOR 250# APPLICATIONS

(01-01-07)

CEILING MOUNTED MONORAILS

DIMENSIONAL DATA



Weights & Dimensions are approximate and may change without notice

500# CAPACITY

Monorail Length (M L)	MODEL NUMBER CAP M RL SD	Track Series	HOIST-TROLLEY DIMENSIONS		MONORAIL DIMENSIONS			TOTAL HANGER POINTS
			TH5	A3	SD (Max)	TH1	FS	
11' - 6	500 - M - 11 - 06	500	2 5/8"	4 7/8"	6'-0	2 3/8"	12"	3
	20'-0					9 1/2"		2
23' - 0	500 - M - 23 - 06				6'-0	2 3/8"	18"	5
	20'-0					9 1/2"		2
28' - 0	500 - M - 28 - 25				25'-0	9 1/2"	2	
33' - 0	500 - M - 33 - 06				6'-0	2 3/8"	18"	7
	20'-0					9 1/2"		3
33' - 0	500 - M - 33 - 30				30'-0	9 1/2"	2	
	43' - 0				500 - M - 43 - 06	6'-0	2 3/8"	24"
20'-0					9 1/2"		3	
53' - 0	500 - M - 53 - 06				6'-0	2 3/8"	36"	10
	20'-0					9 1/2"		4
	25'-0					9 1/2"		3
63' - 0	500 - M - 63 - 06				6'-0	2 3/8"	36"	12
	20'-0					9 1/2"		4
63' - 0	500 - M - 63 - 30				30'-0	9 1/2"	3	
78' - 0	500 - M - 78 - 25				25'-0	9 1/2"	4	
83' - 0	500 - M - 83 - 06				6'-0	2 3/8"	54"	15
	20'-0					9 1/2"		5
93' - 0	500 - M - 93 - 30				30'-0	9 1/2"	4	
	103' - 0	500 - M - 103 - 06	6'-0	2 3/8"	54"	19		
20'-0		9 1/2"		6				
25'-0		9 1/2"		5				
123' - 0	500 - M - 123 - 30	30'-0	9 1/2"	63"	5			

(01-01-07)