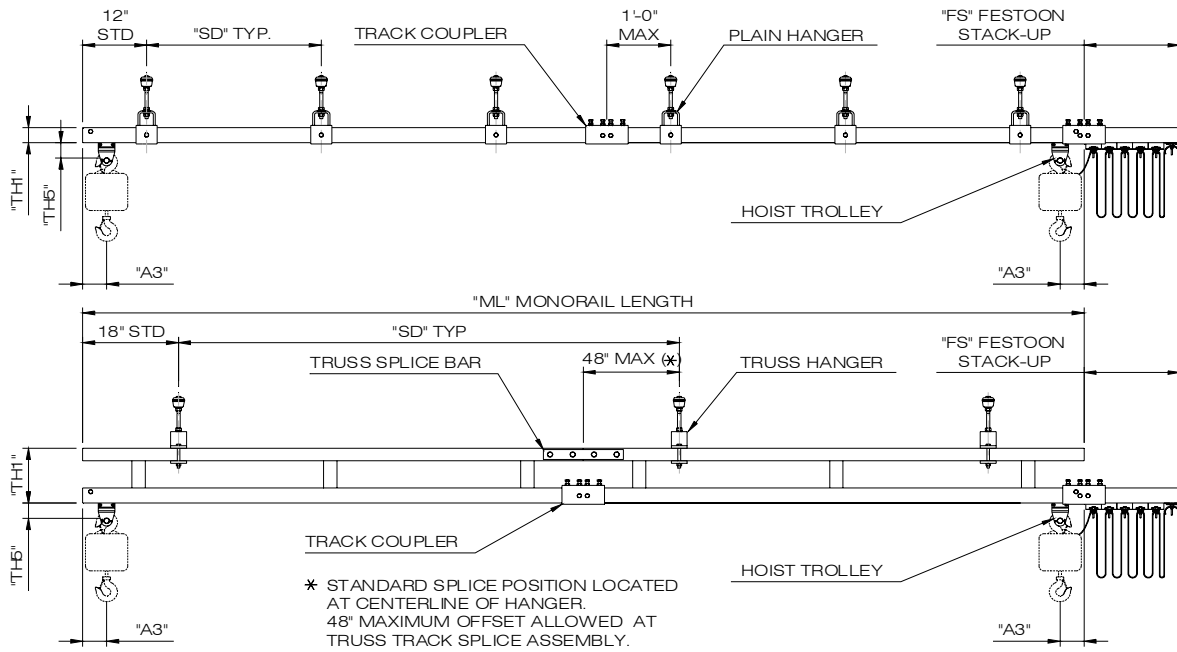


CEILING MOUNTED MONORAILS

DIMENSIONAL DATA



Weights & Dimensions are approximate and may change without notice

4000# CAPACITY

Monorail Length (M L)	MODEL NUMBER CAP M RL SD	Track Series	HOIST-TROLLEY DIMENSIONS		MONORAIL DIMENSIONS			TOTAL HANGER POINTS
			TH5	A3	SD (Max)	TH1	FS	
23' - 0	4000 - M - 23 - 06	2000	5 3/16"	26 5/8"	6'-0	4 3/8"	12"	5
	20'-0				14"	2		
28' - 0	4000 - M - 28 - 25				25'-0	20"	18"	2
	33' - 0				4000 - M - 33 - 06	6'-0		4 3/8"
4000 - M - 33 - 20					20'-0	14"	3	
33' - 0	4000 - M - 33 - 30				30'-0			
	43' - 0				4000 - M - 43 - 06	6'-0	4 3/8"	24"
4000 - M - 43 - 20					20'-0	14"	3	
53' - 0	4000 - M - 53 - 06				6'-0	4 3/8"	36"	10
	4000 - M - 53 - 20				20'-0	14"		4
	4000 - M - 53 - 25				25'-0	14"		3
63' - 0	4000 - M - 63 - 06				6'-0	4 3/8"	54"	12
	4000 - M - 63 - 20				20'-0	18"		4
63' - 0	4000 - M - 63 - 30				30'-0			
78' - 0	4000 - M - 78 - 25				25'-0	14"		4
83' - 0	4000 - M - 83 - 06				6'-0	4 3/8"	54"	15
	4000 - M - 83 - 20	20'-0	14"	5				
93' - 0	4000 - M - 93 - 30	30'-0						
103' - 0	4000 - M - 103 - 06	6'-0	4 3/8"		19			
	4000 - M - 103 - 20	20'-0	14"		6			
	4000 - M - 103 - 25	25'-0	14"		5			
123' - 0	4000 - M - 123 - 30	30'-0						

(01-01-07)