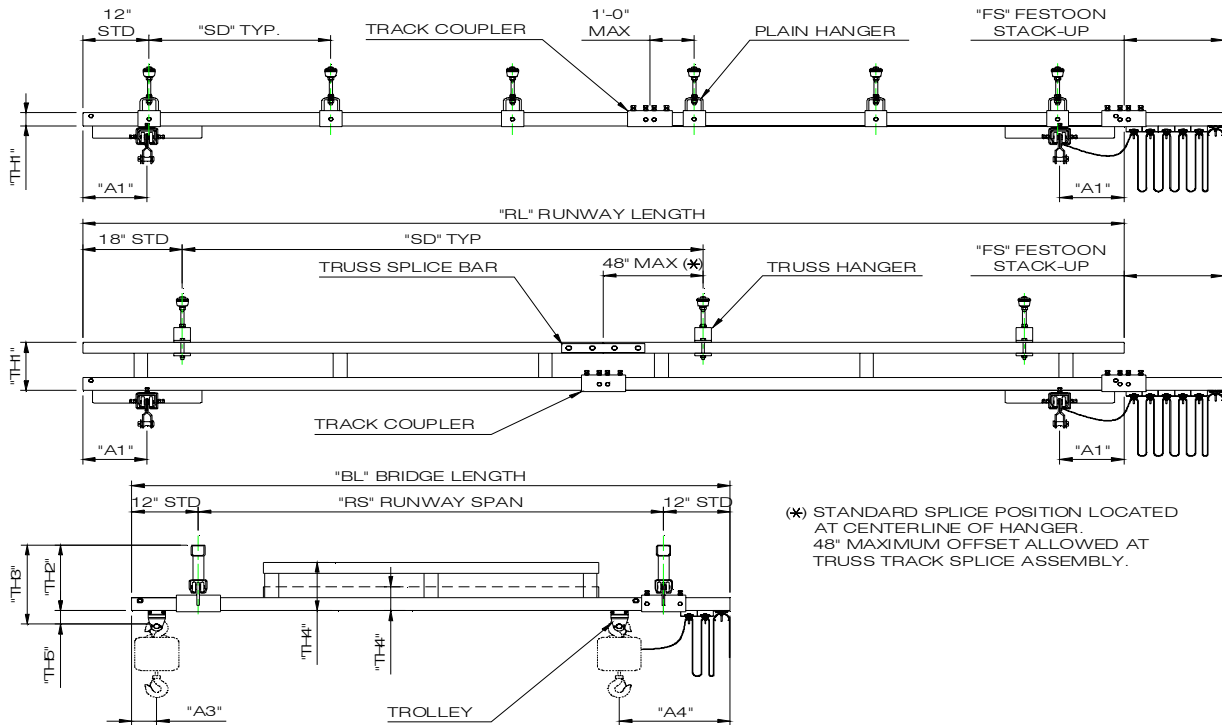


# CEILING MOUNTED CRANES

# DIMENSIONAL DATA



Weights & Dimensions are approximate and may change without notice

## 2000# CAPACITY 10' - 0" BRIDGE LENGTH

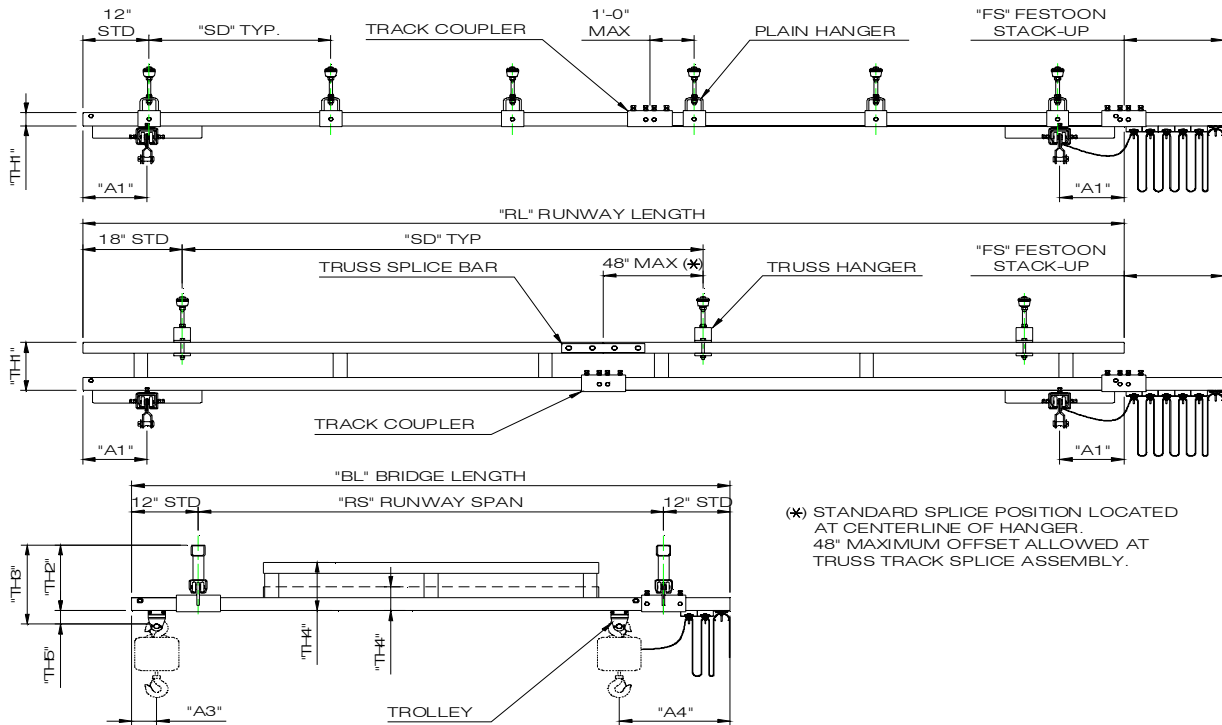
Bridge Length (B L)	Runway Length (R L)	MODEL NUMBER CAP C BL RL SD	Track Series	BRIDGE DIMENSIONS							RUNWAY DIMENSIONS				TOTAL HANGER POINTS
				TH2	TH3	TH4	TH5	A3	A4	RS	SD (Max)	TH1	A1	FS	
10' - 0	11' - 6	2000 - C - 10 - 11 - 06	2000	9 7/8"	14"	4 3/8"	4 1/8"	6 5/8"	22 5/8"	8' - 0	6'-0	4 3/8"	15 1/8"	12"	6
		2000 - C - 10 - 11 - 20		17 1/2"	21 5/8"						20'-0	12"			4
	23' - 0	2000 - C - 10 - 23 - 06		9 7/8"	14"						6'-0	4 3/8"		10	
		2000 - C - 10 - 23 - 20		17 1/2"	21 5/8"						20'-0	12"		4	
	28' - 0	2000 - C - 10 - 28 - 25		17 1/5"	21 5/8"						25'-0	12"		4	
	33' - 0	2000 - C - 10 - 33 - 06		9 7/8"	14"						6'-0	4 3/8"		18"	14
		2000 - C - 10 - 33 - 20		17 1/2"	21 5/8"						20'-0	12"		6	
	33' - 0	2000 - C - 10 - 33 - 30		17 1/5"	21 5/8"						30'-0	12"		4	
		43' - 0		2000 - C - 10 - 43 - 06	9 7/8"						14"	6'-0		4 3/8"	24"
	2000 - C - 10 - 43 - 20			17 1/2"	21 5/8"						20'-0	12"		6	
	53' - 0	2000 - C - 10 - 53 - 06		9 7/8"	14"						6'-0	4 3/8"		20	
		2000 - C - 10 - 53 - 20		17 1/2"	21 5/8"						20'-0	12"		8	
		2000 - C - 10 - 53 - 25		17 1/5"	21 5/8"						25'-0	12"		6	
	63' - 0	2000 - C - 10 - 63 - 06		9 7/8"	14"						6'-0	4 3/8"		24	
		2000 - C - 10 - 63 - 20		17 1/2"	21 5/8"						20'-0	12"		8	
	63' - 0	2000 - C - 10 - 63 - 30		17 1/5"	21 5/8"						30'-0	12"		6	
	78' - 0	2000 - C - 10 - 78 - 25		17 1/5"	21 5/8"						25'-0	12"		8	
	83' - 0	2000 - C - 10 - 83 - 06		9 7/8"	14"						6'-0	4 3/8"		30	
		2000 - C - 10 - 83 - 20		17 1/2"	21 5/8"						20'-0	12"		10	
	93' - 0	2000 - C - 10 - 93 - 30		17 1/5"	21 5/8"						30'-0	12"		8	
103' - 0		2000 - C - 10 - 103 - 06	9 7/8"	14"	6'-0	4 3/8"	38								
	2000 - C - 10 - 103 - 20	17 1/2"	21 5/8"	20'-0	12"	12									
	2000 - C - 10 - 103 - 25	17 1/5"	21 5/8"	25'-0	12"	10									
123' - 0	2000 - C - 10 - 123 - 30	17 1/5"	21 5/8"	30'-0	12"	63"	10								

Note: A1 Dimension is 32 5/8" when using extended end truck.

(01-01-07)

# CEILING MOUNTED CRANES

# DIMENSIONAL DATA



Weights & Dimensions are approximate and may change without notice

## 2000# CAPACITY 20' - 0" BRIDGE LENGTH

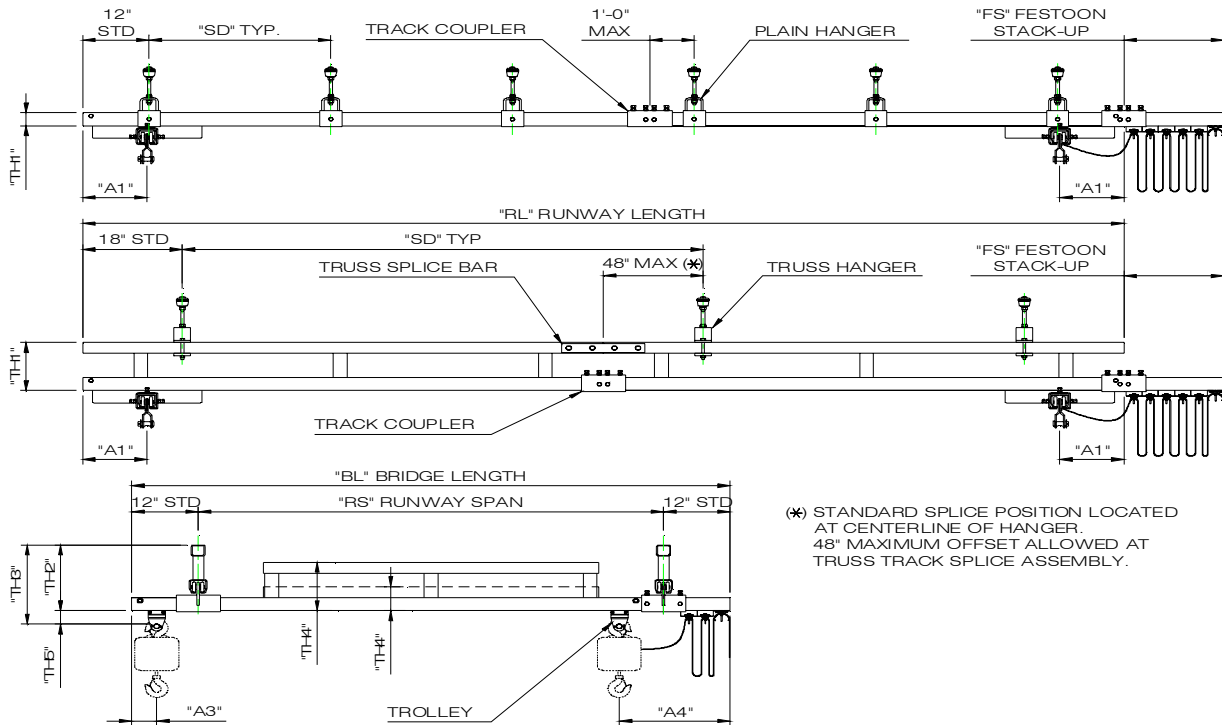
Bridge Length (B L)	Runway Length (R L)	MODEL NUMBER CAP C BL RL SD	Track Series	BRIDGE DIMENSIONS							RUNWAY DIMENSIONS				TOTAL HANGER POINTS
				TH2	TH3	TH4	TH5	A3	A4	RS	SD (Max)	TH1	A1	FS	
20' - 0	23' - 0	2000 - C - 20 - 23 - 06	2000	9 7/8"	14"	8 3/8"	4 1/8"	6 5/8"	22 5/8"	18' - 0	6'-0	4 3/8"	15 1/8"	12"	10
		2000 - C - 20 - 23 - 20		17 1/2"	21 5/8"						20'-0	12"			4
	28' - 0	2000 - C - 20 - 28 - 25		17 1/2"	21 5/8"						25'-0	12"		4	
		33' - 0		2000 - C - 20 - 33 - 06	9 7/8"						14"	6'-0		4 3/8"	18"
	2000 - C - 20 - 33 - 20			17 1/2"	21 5/8"						20'-0				
	33' - 0	2000 - C - 20 - 33 - 30		17 1/2"	21 5/8"						30'-0	12"		4	
		43' - 0		2000 - C - 20 - 43 - 06	9 7/8"						14"	6'-0		4 3/8"	24"
	2000 - C - 20 - 43 - 20			17 1/2"	21 5/8"						20'-0				
	53' - 0	2000 - C - 20 - 53 - 06		9 7/8"	14"						6'-0	4 3/8"		36"	20
		2000 - C - 20 - 53 - 20		17 1/2"	21 5/8"										20'-0
	63' - 0	2000 - C - 20 - 63 - 06		9 7/8"	14"						6'-0	4 3/8"		36"	24
		2000 - C - 20 - 63 - 20		17 1/2"	21 5/8"										20'-0
	63' - 0	2000 - C - 20 - 63 - 30		17 1/2"	21 5/8"						30'-0	12"		6	
	78' - 0	2000 - C - 20 - 78 - 25		17 1/2"	21 5/8"						25'-0	12"		8	
		83' - 0		2000 - C - 20 - 83 - 06	9 7/8"						14"	6'-0		4 3/8"	54"
	2000 - C - 20 - 83 - 20			17 1/2"	21 5/8"						20'-0				
	93' - 0	2000 - C - 20 - 93 - 30		17 1/2"	21 5/8"						30'-0	12"		8	
		103' - 0		2000 - C - 20 - 103 - 06	9 7/8"						14"	6'-0		4 3/8"	54"
2000 - C - 20 - 103 - 20	17 1/2"		21 5/8"	20'-0	12"	12									
103' - 0	2000 - C - 20 - 103 - 25	17 1/2"	21 5/8"	25'-0	12"	10									
	123' - 0	2000 - C - 20 - 123 - 30	17 1/2"	21 5/8"	30'-0	12"	63"	10							

Note: A1 Dimension is 32 5/8" when using extended end truck.

(01-01-07)

# CEILING MOUNTED CRANES

# DIMENSIONAL DATA



Weights & Dimensions are approximate and may change without notice

## 2000# CAPACITY 23' - 0" BRIDGE LENGTH

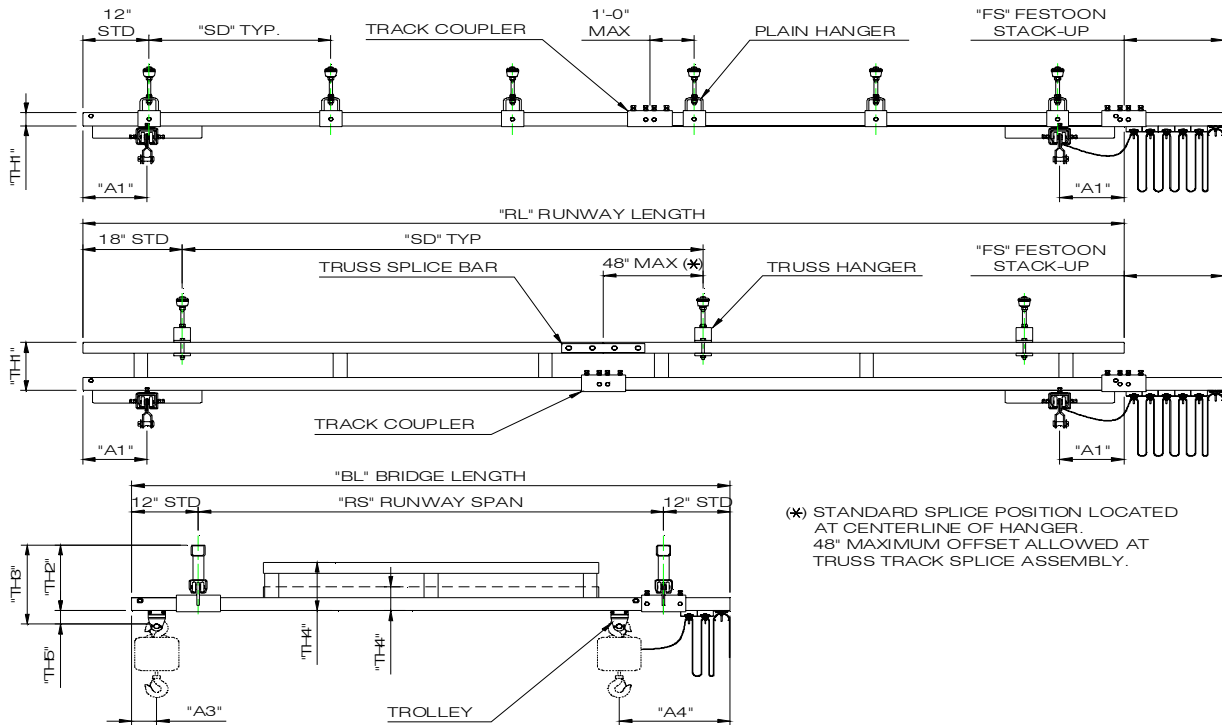
Bridge Length (B L)	Runway Length (R L)	MODEL NUMBER CAP C BL RL SD	Track Series	BRIDGE DIMENSIONS							RUNWAY DIMENSIONS				TOTAL HANGER POINTS
				TH2	TH3	TH4	TH5	A3	A4	RS	SD (Max)	TH1	A1	FS	
23' - 0	23' - 0	2000 - C - 23 - 23 - 06	2000	9 7/8"	14"	12"	4 1/8"	6 5/8"	22 5/8"	21' - 0	6'-0	4 3/8"	15 1/8"	12"	10
		2000 - C - 23 - 23 - 20		17 1/2"	21 5/8"						20'-0	12"		4	
	28' - 0	2000 - C - 23 - 28 - 25		17 1/2"	21 5/8"						25'-0	12"		4	
		33' - 0		2000 - C - 23 - 33 - 06	9 7/8"						14"	6'-0		4 3/8"	18"
	2000 - C - 23 - 33 - 20			17 1/2"	21 5/8"						20'-0	12"		6	
	33' - 0	2000 - C - 23 - 33 - 30		17 1/2"	21 5/8"						30'-0	12"		4	
		43' - 0		2000 - C - 23 - 43 - 06	9 7/8"						14"	6'-0		4 3/8"	24"
	2000 - C - 23 - 43 - 20			17 1/2"	21 5/8"						20'-0	12"		6	
	53' - 0	2000 - C - 23 - 53 - 06		9 7/8"	14"						6'-0	4 3/8"		36"	20
		2000 - C - 23 - 53 - 20		17 1/2"	21 5/8"						20'-0	12"			8
	63' - 0	2000 - C - 23 - 53 - 25		17 1/2"	21 5/8"						25'-0	12"		6	
		63' - 0		2000 - C - 23 - 63 - 06	9 7/8"						14"	6'-0		4 3/8"	54"
	2000 - C - 23 - 63 - 20			17 1/2"	21 5/8"						20'-0	12"		8	
	63' - 0	2000 - C - 23 - 63 - 30		17 1/2"	21 5/8"						30'-0	12"		6	
		78' - 0		2000 - C - 23 - 78 - 25	17 1/2"						21 5/8"	25'-0		12"	8
	83' - 0			2000 - C - 23 - 83 - 06	9 7/8"						14"	6'-0		4 3/8"	63"
		2000 - C - 23 - 83 - 20		17 1/2"	21 5/8"						20'-0	12"		10	
	93' - 0	2000 - C - 23 - 93 - 30		17 1/2"	21 5/8"						30'-0	12"		8	
		103' - 0		2000 - C - 23 - 103 - 06	9 7/8"						14"	6'-0		4 3/8"	38
	2000 - C - 23 - 103 - 20			17 1/2"	21 5/8"						20'-0	12"		12	
2000 - C - 23 - 103 - 25	17 1/2"		21 5/8"	25'-0	12"	10									
2000 - C - 23 - 123 - 30	17 1/2"		21 5/8"	30'-0	12"	10									

Note: A1 Dimension is 32 5/8" when using extended end truck.

(01-01-07)

# CEILING MOUNTED CRANES

# DIMENSIONAL DATA



(\* STANDARD SPLICE POSITION LOCATED AT CENTERLINE OF HANGER. 48" MAXIMUM OFFSET ALLOWED AT TRUSS TRACK SPLICE ASSEMBLY.

Weights & Dimensions are approximate and may change without notice

## 2000# CAPACITY 28' - 0" BRIDGE LENGTH

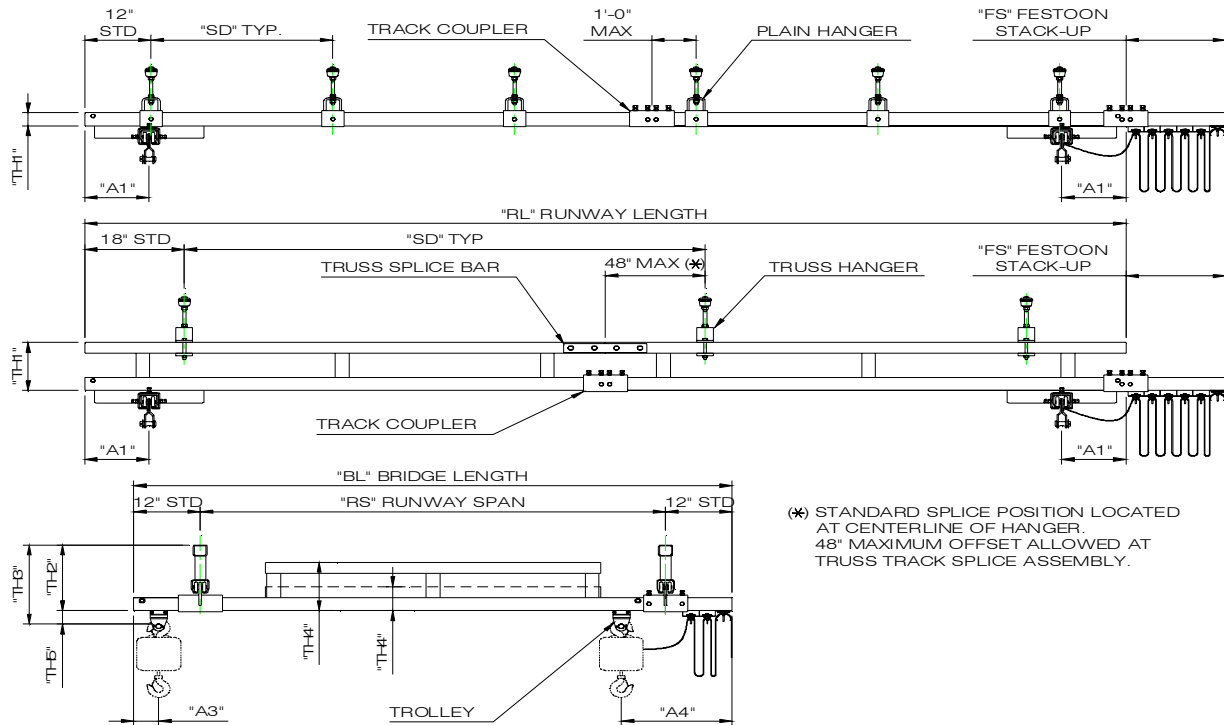
Bridge Length (B L)	Runway Length (R L)	MODEL NUMBER CAP C BL RL SD	Track Series	BRIDGE DIMENSIONS						RUNWAY DIMENSIONS				TOTAL HANGER POINTS	
				TH2	TH3	TH4	TH5	A3	A4	RS	SD (Max)	TH1	A1		FS
28' - 0	23' - 0	2000 - C - 28 - 23 - 06	2000	13 1/8"	17 1/4"	13 3/8"	4 1/8"	6 5/8"	27 1/8"	26' - 0	6'-0	4 3/8"	32 5/8"	12"	10
		2000 - C - 28 - 23 - 20		20 3/4"	24 7/8"						20'-0	12"			4
	28' - 0	2000 - C - 28 - 28 - 25		20 3/4"	24 7/8"						25'-0	12"		4	
	33' - 0	2000 - C - 28 - 33 - 06		13 1/8"	17 1/4"						6'-0	4 3/8"		18"	14
		2000 - C - 28 - 33 - 20		20 3/4"	24 7/8"						20'-0	12"			6
	33' - 0	2000 - C - 28 - 33 - 30		20 3/4"	24 7/8"						30'-0	12"		4	
		43' - 0		2000 - C - 28 - 43 - 06	13 1/8"						17 1/4"	6'-0		4 3/8"	24"
	2000 - C - 28 - 43 - 20			20 3/4"	24 7/8"						20'-0	12"		6	
	53' - 0	2000 - C - 28 - 53 - 06		13 1/8"	17 1/4"						6'-0	4 3/8"		36"	20
		2000 - C - 28 - 53 - 20		20 3/4"	24 7/8"						20'-0	12"			8
	63' - 0	2000 - C - 28 - 63 - 06		20 3/4"	24 7/8"						25'-0	12"		6	
		63' - 0		2000 - C - 28 - 63 - 20	13 1/8"						17 1/4"	6'-0		4 3/8"	24
	2000 - C - 28 - 63 - 30			20 3/4"	24 7/8"						20'-0	12"		8	
	78' - 0	2000 - C - 28 - 78 - 25		20 3/4"	24 7/8"						30'-0	12"		6	
	83' - 0	2000 - C - 28 - 83 - 06		20 3/4"	24 7/8"						25'-0	12"		8	
		2000 - C - 28 - 83 - 20		13 1/8"	17 1/4"						6'-0	4 3/8"		30	
	93' - 0	2000 - C - 28 - 93 - 30		20 3/4"	24 7/8"						20'-0	12"			10
		103' - 0		2000 - C - 28 - 103 - 06	20 3/4"						24 7/8"	30'-0		12"	54"
	2000 - C - 28 - 103 - 20			13 1/8"	17 1/4"						6'-0	4 3/8"		38	
	2000 - C - 28 - 103 - 25			20 3/4"	24 7/8"						20'-0	12"		12	
2000 - C - 28 - 103 - 30	20 3/4"		24 7/8"	25'-0	12"	10									
123' - 0	2000 - C - 28 - 123 - 30	20 3/4"	24 7/8"	30'-0	12"	63"	10								

Note: A1 Dimension is 32 5/8" when using extended end truck.

(01-01-07)

# CEILING MOUNTED CRANES

# DIMENSIONAL DATA



Weights & Dimensions are approximate and may change without notice

## 2000# CAPACITY 34' - 0" BRIDGE LENGTH

Bridge Length (B L)	Runway Length (R L)	MODEL NUMBER CAP C BL RL SD	Track Series	BRIDGE DIMENSIONS							RUNWAY DIMENSIONS				TOTAL HANGER POINTS
				TH2	TH3	TH4	TH5	A3	A4	RS	SD (Max)	TH1	A1	FS	
34' - 0	28' - 0	2000 - C - 34 - 28 - 25	2000	20 3/4"	24 7/8"	14 1/2"	4 1/8"	6 5/8"	27 1/8"	32' - 0	25'-0	12"	18"	32 5/8"	4
	33' - 0	2000 - C - 34 - 33 - 06		13 1/8"	17 1/4"						6'-0	4 3/8"			14
		2000 - C - 34 - 33 - 20		20 3/4"	24 7/8"						20'-0	12"			6
	33' - 0	2000 - C - 34 - 33 - 30		20 3/4"	24 7/8"						30'-0	12"	4		
		43' - 0		2000 - C - 34 - 43 - 06	13 1/8"						17 1/4"	6'-0	4 3/8"		24"
	2000 - C - 34 - 43 - 20			20 3/4"	24 7/8"						20'-0	12"	6		
	53' - 0	2000 - C - 34 - 53 - 06		13 1/8"	17 1/4"						6'-0	4 3/8"	36"		20
		2000 - C - 34 - 53 - 20		20 3/4"	24 7/8"						20'-0	12"			8
	63' - 0	2000 - C - 34 - 63 - 06		13 1/8"	17 1/4"						6'-0	4 3/8"	36"		24
		2000 - C - 34 - 63 - 20		20 3/4"	24 7/8"						20'-0	12"			8
	63' - 0	2000 - C - 34 - 63 - 30		20 3/4"	24 7/8"						30'-0	12"	6		
	78' - 0	2000 - C - 34 - 78 - 25		20 3/4"	24 7/8"						25'-0	12"	8		
	83' - 0	2000 - C - 34 - 83 - 06		13 1/8"	17 1/4"						6'-0	4 3/8"	54"		30
		2000 - C - 34 - 83 - 20		20 3/4"	24 7/8"						20'-0	12"			10
	93' - 0	2000 - C - 34 - 93 - 30		20 3/4"	24 7/8"						30'-0	12"	8		
	103' - 0	2000 - C - 34 - 103 - 06		13 1/8"	17 1/4"						6'-0	4 3/8"	54"		38
2000 - C - 34 - 103 - 20		20 3/4"	24 7/8"	20'-0	12"	12									
2000 - C - 34 - 103 - 25		20 3/4"	24 7/8"	25'-0	12"	10									
123' - 0	2000 - C - 34 - 103 - 30	20 3/4"	24 7/8"	30'-0	12"	63"	10								

Note: A1 Dimension is 23 1/2" when using extended end truck.

(01-01-07)