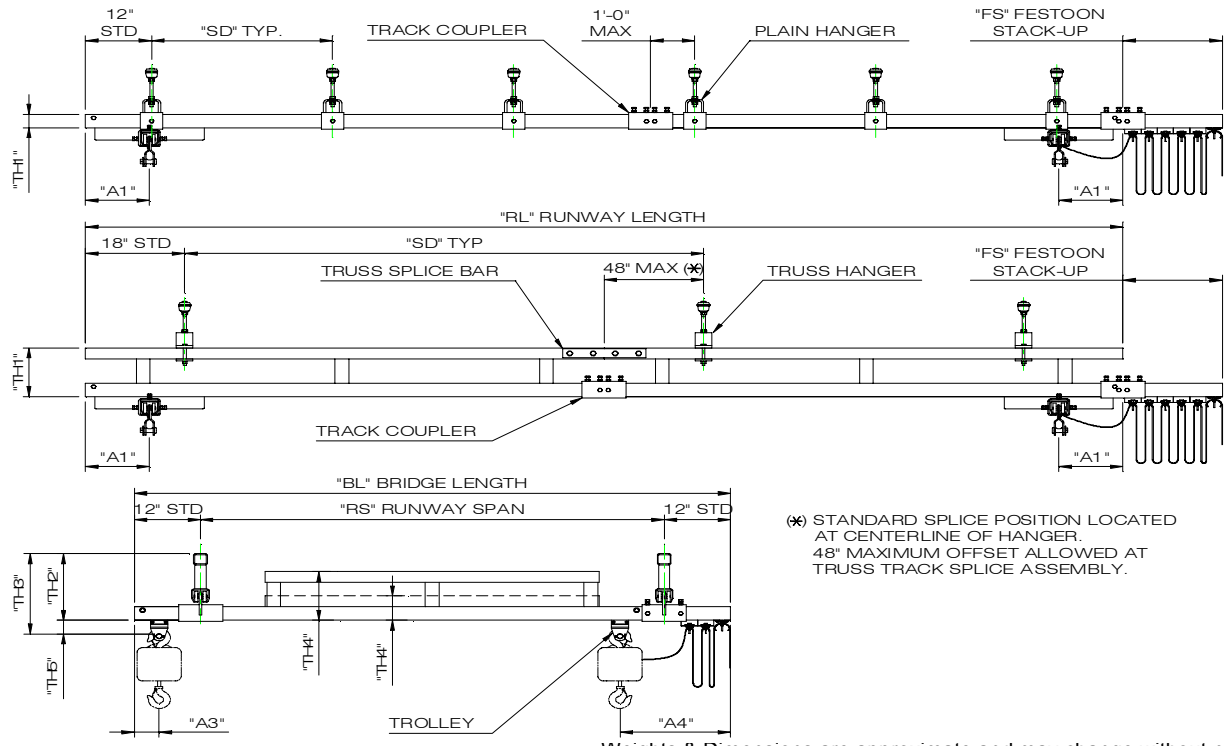


CEILING MOUNTED CRANES

DIMENSIONAL DATA

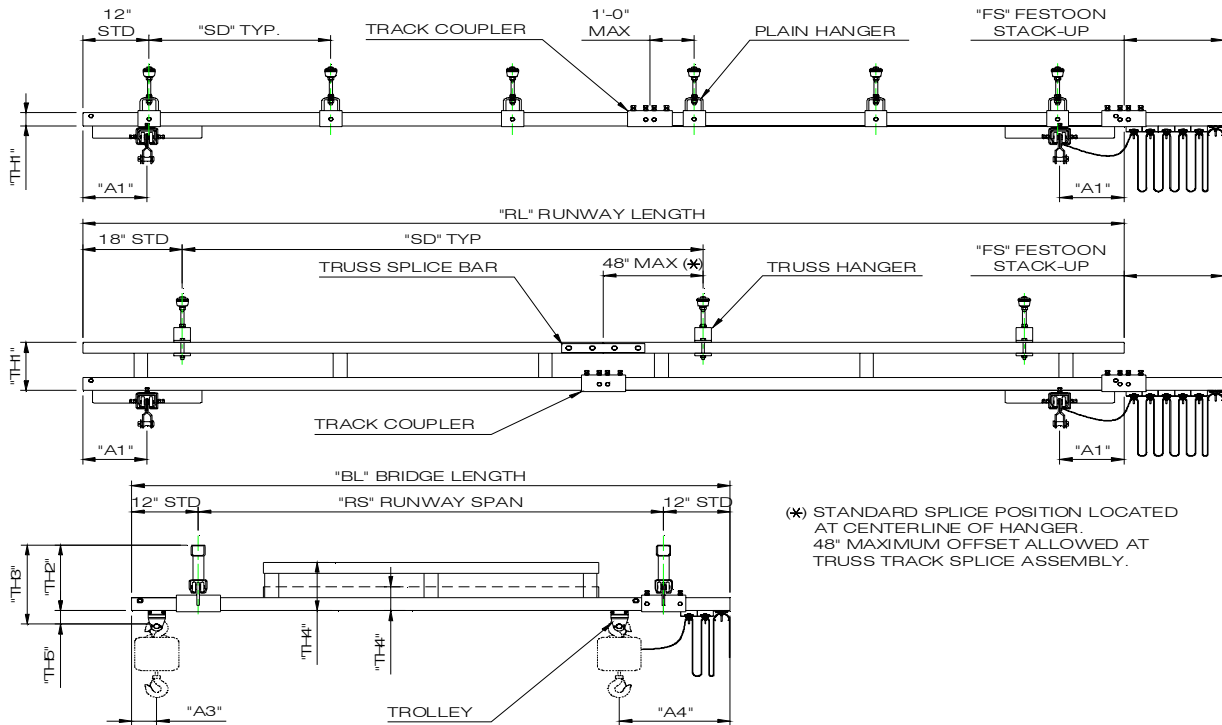


250# CAPACITY

TEMPORARILY USE 500# CAPACITY DATA FOR 250# APPLICATIONS

CEILING MOUNTED CRANES

DIMENSIONAL DATA



(* STANDARD SPLICE POSITION LOCATED AT CENTERLINE OF HANGER. 48" MAXIMUM OFFSET ALLOWED AT TRUSS TRACK SPLICE ASSEMBLY.

Weights & Dimensions are approximate and may change without notice

500# CAPACITY

8' - 0" BRIDGE LENGTH

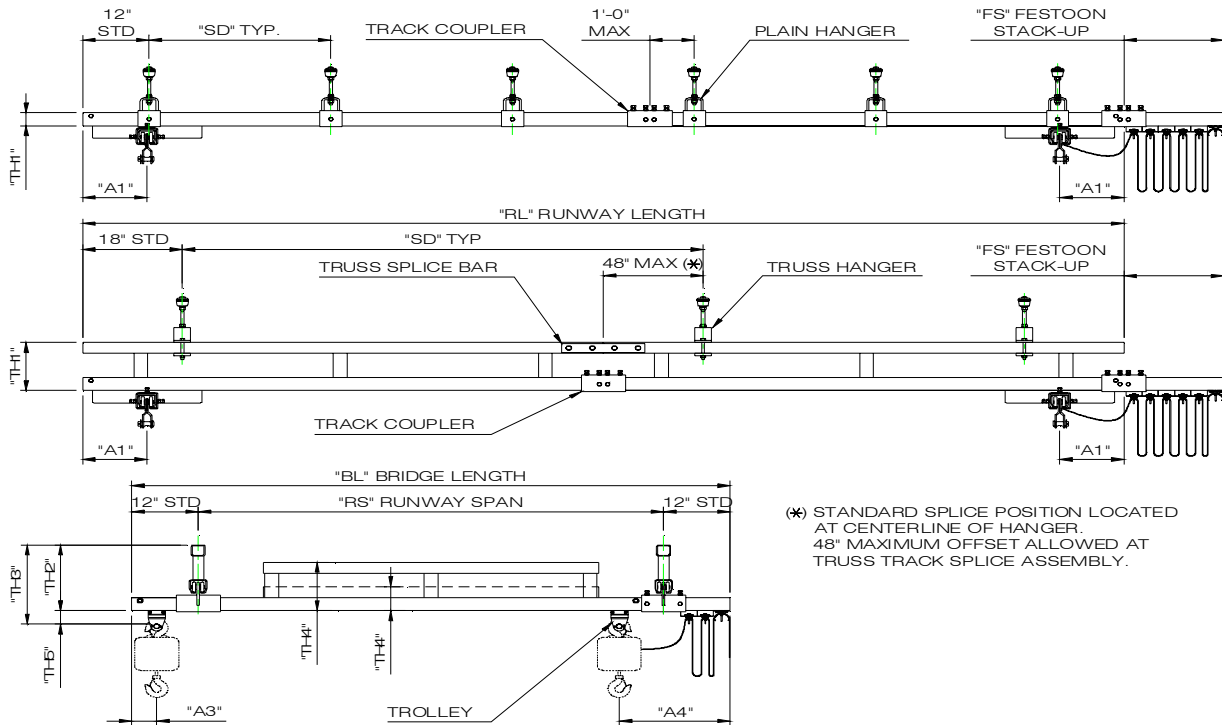
Bridge Length (B L)	Runway Length (R L)	MODEL NUMBER CAP C BL RL SD	Track Series	BRIDGE DIMENSIONS						RUNWAY DIMENSIONS				TOTAL HANGER POINTS	
				TH2	TH3	TH4	TH5	A3	A4	RS	SD (Max)	TH1	A1		FS
8' - 0"	11' - 6"	500 - C - 8 - 11 - 06	500	5 3/4"	8 3/8"	2 3/8"	2 5/8"	4 7/8"	11 7/8"	6' - 0"	6'-0"	2 3/8"	11 3/8"	12"	6
		500 - C - 8 - 11 - 20		12 7/8"	15 1/2"						20'-0"	9 1/2"			4
	23' - 0"	500 - C - 8 - 23 - 06		5 3/4"	8 3/8"						6'-0"	2 3/8"		18"	10
		500 - C - 8 - 23 - 20		12 7/8"	15 1/2"						20'-0"	9 1/2"			4
	28' - 0"	500 - C - 8 - 28 - 25		12 7/8"	15 1/2"						25'-0"	9 1/2"		36"	4
		33' - 0"		500 - C - 8 - 33 - 06	5 3/4"						8 3/8"	6'-0"			2 3/8"
	500 - C - 8 - 33 - 20			12 7/8"	15 1/2"						20'-0"	9 1/2"		6	
	33' - 0"	500 - C - 8 - 33 - 30		12 7/8"	15 1/2"						30'-0"	9 1/2"		4	
		43' - 0"		500 - C - 8 - 43 - 06	5 3/4"						8 3/8"	6'-0"		2 3/8"	54"
	500 - C - 8 - 43 - 20			12 7/8"	15 1/2"						20'-0"	9 1/2"		6	
	53' - 0"	500 - C - 8 - 53 - 06		5 3/4"	8 3/8"						6'-0"	2 3/8"		36"	20
		500 - C - 8 - 53 - 20		12 7/8"	15 1/2"						20'-0"	9 1/2"			
	63' - 0"	500 - C - 8 - 63 - 06		5 3/4"	8 3/8"						6'-0"	2 3/8"		54"	24
		500 - C - 8 - 63 - 20		12 7/8"	15 1/2"						20'-0"	9 1/2"			
	63' - 0"	500 - C - 8 - 63 - 30		12 7/8"	15 1/2"						30'-0"	9 1/2"		6	
		78' - 0"		500 - C - 8 - 78 - 25	12 7/8"						15 1/2"	25'-0"		9 1/2"	36"
	83' - 0"			500 - C - 8 - 83 - 06	5 3/4"						8 3/8"	6'-0"		2 3/8"	
		500 - C - 8 - 83 - 20		12 7/8"	15 1/2"						20'-0"	9 1/2"		10	
	93' - 0"	500 - C - 8 - 93 - 30		12 7/8"	15 1/2"						30'-0"	9 1/2"		8	
		103' - 0"		500 - C - 8 - 103 - 06	5 3/4"						8 3/8"	6'-0"		2 3/8"	36"
500 - C - 8 - 103 - 20	12 7/8"		15 1/2"	20'-0"	9 1/2"	12									
103' - 0"	500 - C - 8 - 103 - 25	12 7/8"	15 1/2"	25'-0"	9 1/2"	54"	10								
	123' - 0"	500 - C - 8 - 123 - 30	12 7/8"	15 1/2"	30'-0"			9 1/2"	63"	10					

Note: A1 Dimension is 22 1/4" when using extended end truck.

(01-01-07)

CEILING MOUNTED CRANES

DIMENSIONAL DATA



(* STANDARD SPLICE POSITION LOCATED AT CENTERLINE OF HANGER. 48\"/>

Weights & Dimensions are approximate and may change without notice

500# CAPACITY 10' - 0" BRIDGE LENGTH

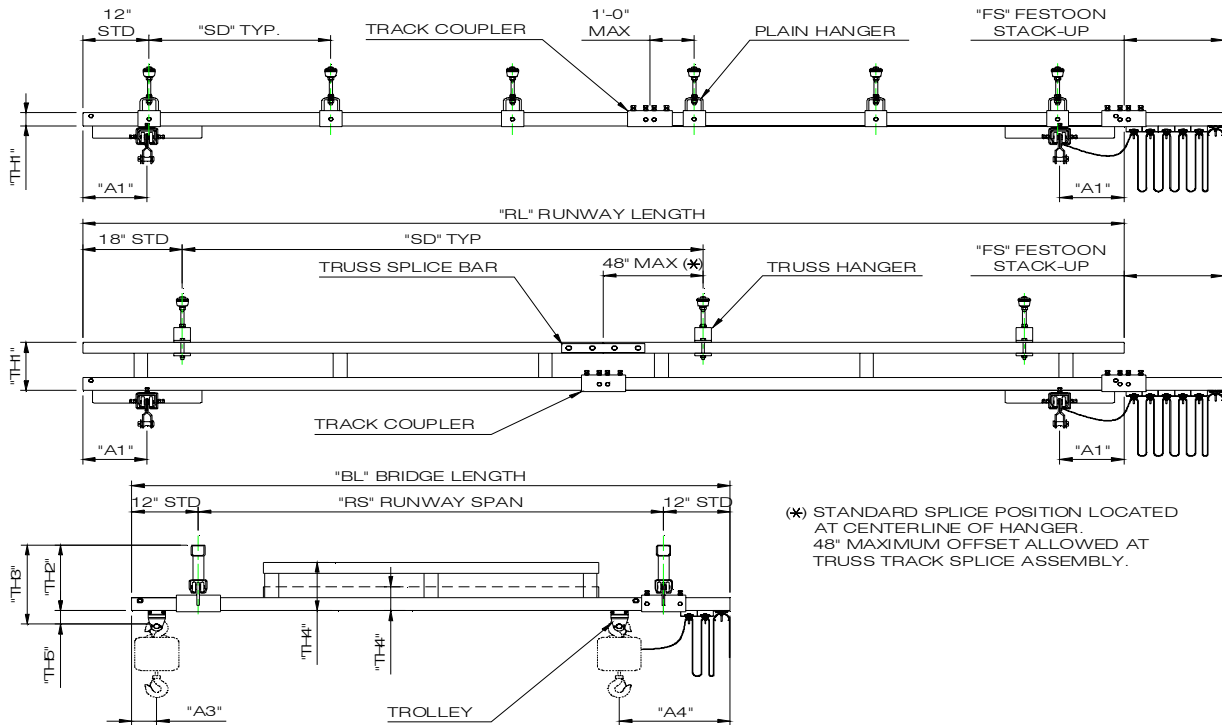
Bridge Length (B L)	Runway Length (R L)	MODEL NUMBER CAP C BL RL SD	Track Series	BRIDGE DIMENSIONS						RUNWAY DIMENSIONS				TOTAL HANGER POINTS	
				TH2	TH3	TH4	TH5	A3	A4	RS	SD (Max)	TH1	A1		FS
10' - 0	11' - 6	500 - C - 10 - 11 - 06	500	5 3/4"	8 3/8"	4 3/8"	2 5/8"	4 7/8"	19 7/8"	8' - 0	6'-0	2 3/8"	11 3/8"	12"	6
		500 - C - 10 - 11 - 20		12 7/8"	15 1/2"						20'-0	9 1/2"			4
	23' - 0	500 - C - 10 - 23 - 06		5 3/4"	8 3/8"						6'-0	2 3/8"		18"	10
		500 - C - 10 - 23 - 20		12 7/8"	15 1/2"						20'-0	9 1/2"			4
	28' - 0	500 - C - 10 - 28 - 25		12 7/8"	15 1/2"						25'-0	9 1/2"		4	
	33' - 0	500 - C - 10 - 33 - 06		5 3/4"	8 3/8"						6'-0	2 3/8"		18"	14
		500 - C - 10 - 33 - 20		12 7/8"	15 1/2"						20'-0	9 1/2"			6
	33' - 0	500 - C - 10 - 33 - 30		12 7/8"	15 1/2"						30'-0	9 1/2"		4	
	43' - 0	500 - C - 10 - 43 - 06		5 3/4"	8 3/8"						6'-0	2 3/8"		24"	16
		500 - C - 10 - 43 - 20		12 7/8"	15 1/2"						20'-0	9 1/2"			6
	53' - 0	500 - C - 10 - 53 - 06		5 3/4"	8 3/8"						6'-0	2 3/8"		36"	20
		500 - C - 10 - 53 - 20		12 7/8"	15 1/2"						20'-0	9 1/2"			8
	63' - 0	500 - C - 10 - 63 - 06		5 3/4"	8 3/8"						6'-0	2 3/8"		36"	24
		500 - C - 10 - 63 - 20		12 7/8"	15 1/2"						20'-0	9 1/2"			8
	63' - 0	500 - C - 10 - 63 - 30		12 7/8"	15 1/2"						30'-0	9 1/2"		6	
	78' - 0	500 - C - 10 - 78 - 25		12 7/8"	15 1/2"						25'-0	9 1/2"		8	
	83' - 0	500 - C - 10 - 83 - 06		5 3/4"	8 3/8"						6'-0	2 3/8"		54"	30
		500 - C - 10 - 83 - 20		12 7/8"	15 1/2"						20'-0	9 1/2"			10
	93' - 0	500 - C - 10 - 93 - 30		12 7/8"	15 1/2"						30'-0	9 1/2"		8	
	103' - 0	500 - C - 10 - 103 - 06		5 3/4"	8 3/8"						6'-0	2 3/8"		54"	38
500 - C - 10 - 103 - 20		12 7/8"	15 1/2"	20'-0	9 1/2"	12									
500 - C - 10 - 103 - 25		12 7/8"	15 1/2"	25'-0	9 1/2"	10									
123' - 0	500 - C - 10 - 123 - 30	12 7/8"	15 1/2"	30'-0	9 1/2"	63"	10								

Note: A1 Dimension is 22 1/4" when using extended end truck.

(01-01-07)

CEILING MOUNTED CRANES

DIMENSIONAL DATA



Weights & Dimensions are approximate and may change without notice

500# CAPACITY

15' - 0" BRIDGE LENGTH

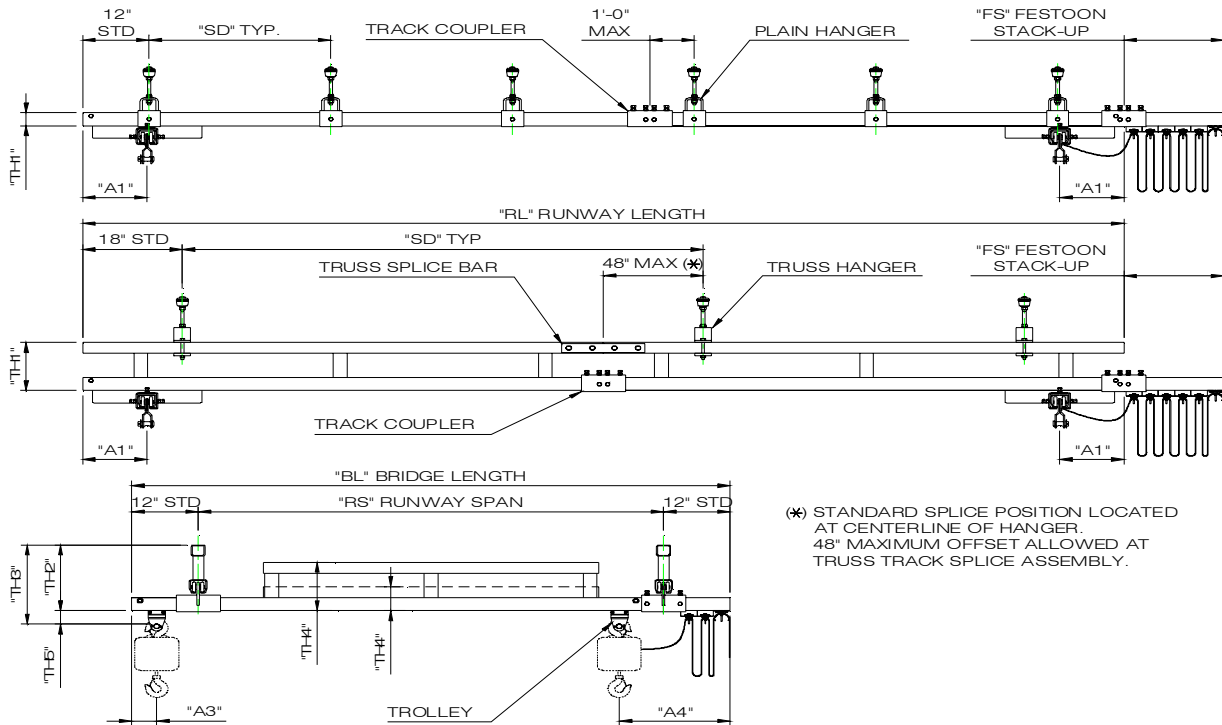
Bridge Length (B L)	Runway Length (R L)	MODEL NUMBER CAP C BL RL SD	Track Series	BRIDGE DIMENSIONS						RUNWAY DIMENSIONS				TOTAL HANGER POINTS	
				TH2	TH3	TH4	TH5	A3	A4	RS	SD (Max)	TH1	A1		FS
15' - 0	23' - 0	500 - C - 15 - 23 - 06	500	5 3/4"	8 3/8"	5 3/8	2 5/8"	4 7/8"	19 7/8"	13' - 0	6'-0	2 3/8"	11 3/8"	12"	10
		500 - C - 15 - 23 - 20		12 7/8"	15 1/2"						20'-0	9 1/2"			4
	28' - 0	500 - C - 15 - 28 - 25		12 7/8"	15 1/2"						25'-0	9 1/2"		4	
		33' - 0		500 - C - 15 - 33 - 06	5 3/4"						8 3/8"	6'-0		2 3/8"	18"
	500 - C - 15 - 33 - 20			12 7/8"	15 1/2"						20'-0	9 1/2"		6	
	33' - 0	500 - C - 15 - 33 - 30		12 7/8"	15 1/2"						30'-0	9 1/2"		4	
		43' - 0		500 - C - 15 - 43 - 06	5 3/4"						8 3/8"	6'-0		2 3/8"	24"
	500 - C - 15 - 43 - 20			12 7/8"	15 1/2"						20'-0	9 1/2"		6	
	53' - 0	500 - C - 15 - 53 - 06		5 3/4"	8 3/8"						6'-0	2 3/8"		36"	20
		500 - C - 15 - 53 - 20		12 7/8"	15 1/2"						20'-0	9 1/2"			8
	53' - 0	500 - C - 15 - 53 - 25		12 7/8"	15 1/2"						25'-0	9 1/2"		6	
		63' - 0		500 - C - 15 - 63 - 06	5 3/4"						8 3/8"	6'-0		2 3/8"	36"
	500 - C - 15 - 63 - 20			12 7/8"	15 1/2"						20'-0	9 1/2"		8	
	63' - 0	500 - C - 15 - 63 - 30		12 7/8"	15 1/2"						30'-0	9 1/2"		6	
		78' - 0		500 - C - 15 - 78 - 25	12 7/8"						15 1/2"	25'-0		9 1/2"	8
	83' - 0			500 - C - 15 - 83 - 06	5 3/4"						8 3/8"	6'-0		2 3/8"	54"
		500 - C - 15 - 83 - 20		12 7/8"	15 1/2"						20'-0	9 1/2"		10	
	93' - 0	500 - C - 15 - 93 - 30		12 7/8"	15 1/2"						30'-0	9 1/2"		8	
		103' - 0		500 - C - 15 - 103 - 06	5 3/4"						8 3/8"	6'-0		2 3/8"	54"
	500 - C - 15 - 103 - 20			12 7/8"	15 1/2"						20'-0	9 1/2"		12	
500 - C - 15 - 103 - 25	12 7/8"		15 1/2"	25'-0	9 1/2"	10									
500 - C - 15 - 103 - 30	12 7/8"		15 1/2"	30'-0	9 1/2"	10									

Note: A1 Dimension is 22 1/4" when using extended end truck.

(01-01-07)

CEILING MOUNTED CRANES

DIMENSIONAL DATA



Weights & Dimensions are approximate and may change without notice

500# CAPACITY

20' - 0" BRIDGE LENGTH

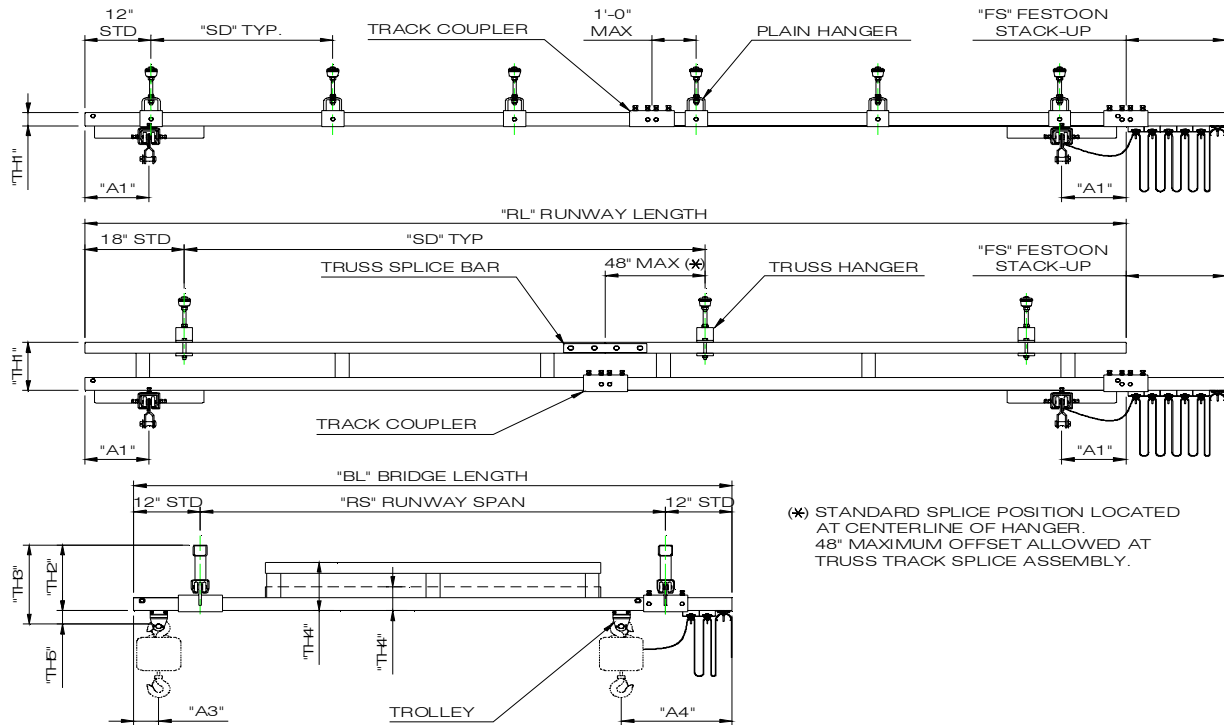
Bridge Length (B L)	Runway Length (R L)	MODEL NUMBER CAP C BL RL SD	Track Series	BRIDGE DIMENSIONS						RUNWAY DIMENSIONS				TOTAL HANGER POINTS																																												
				TH2	TH3	TH4	TH5	A3	A4	RS	SD (Max)	TH1	A1		FS																																											
20' - 0	23' - 0	500 - C - 20 - 23 - 06	500	5 3/4"	8 3/8"	6 3/8"	2 5/8"	4 7/8"	19 7/8"	18' - 0	6'-0	2 3/8"	11 3/8"	12"	10																																											
		500 - C - 20 - 23 - 20		12 7/8"	15 1/2"						20'-0	9 1/2"			4																																											
	28' - 0	500 - C - 20 - 28 - 25		12 7/8"	15 1/2"						25'-0	9 1/2"		4																																												
		33' - 0		500 - C - 20 - 33 - 06	5 3/4"						8 3/8"	6 3/8"		2 5/8"	4 7/8"	19 7/8"	18' - 0	6'-0	2 3/8"	11 3/8"	18"	14																																				
	500 - C - 20 - 33 - 20			12 7/8"	15 1/2"						20'-0							9 1/2"	6																																							
	33' - 0	500 - C - 20 - 33 - 30		12 7/8"	15 1/2"						30'-0							9 1/2"	4																																							
		43' - 0		500 - C - 20 - 43 - 06	5 3/4"						8 3/8"							6 3/8"	2 5/8"		4 7/8"	19 7/8"	18' - 0	6'-0	2 3/8"	11 3/8"	24"	16																														
	500 - C - 20 - 43 - 20			12 7/8"	15 1/2"						20'-0													9 1/2"	6																																	
	53' - 0	500 - C - 20 - 53 - 06		5 3/4"	8 3/8"						6 3/8"													2 5/8"	4 7/8"		19 7/8"	18' - 0	18' - 0	6'-0	2 3/8"	11 3/8"	36"	20																								
		500 - C - 20 - 53 - 20		12 7/8"	15 1/2"																									20'-0	9 1/2"			8																								
	53' - 0	500 - C - 20 - 53 - 25		12 7/8"	15 1/2"																									25'-0	9 1/2"			6																								
		63' - 0		500 - C - 20 - 63 - 06	5 3/4"																									8 3/8"	6 3/8"			2 5/8"	4 7/8"	19 7/8"	18' - 0	18' - 0	6'-0	2 3/8"	11 3/8"	36"	24															
	500 - C - 20 - 63 - 20			12 7/8"	15 1/2"																									20'-0									9 1/2"	8																		
	63' - 0	500 - C - 20 - 63 - 30		12 7/8"	15 1/2"																									30'-0									9 1/2"	6																		
		78' - 0		500 - C - 20 - 78 - 25	12 7/8"																									15 1/2"									25'-0	9 1/2"			8															
	83' - 0			500 - C - 20 - 83 - 06	5 3/4"																									8 3/8"									6 3/8"	2 5/8"			4 7/8"	19 7/8"	18' - 0	18' - 0	6'-0	2 3/8"	11 3/8"	54"	30							
		500 - C - 20 - 83 - 20		12 7/8"	15 1/2"																									20'-0																	9 1/2"	10										
	93' - 0	500 - C - 20 - 936 - 30		12 7/8"	15 1/2"																									30'-0																	9 1/2"	8										
		103' - 0		500 - C - 20 - 103 - 06	5 3/4"																									8 3/8"																	6 3/8"	2 5/8"			4 7/8"	19 7/8"	18' - 0	18' - 0	6'-0	2 3/8"	11 3/8"	54"
	500 - C - 20 - 103 - 20			12 7/8"	15 1/2"																									20'-0																									9 1/2"	12		
500 - C - 20 - 103 - 25	12 7/8"		15 1/2"	25'-0	9 1/2"	10																																																				
500 - C - 20 - 123 - 30	12 7/8"		15 1/2"	30'-0	9 1/2"	10																																																				

Note: A1 Dimension is 22 1/4" when using extended end truck.

(01-01-07)

CEILING MOUNTED CRANES

DIMENSIONAL DATA



Weights & Dimensions are approximate and may change without notice

500# CAPACITY

23' - 0" BRIDGE LENGTH

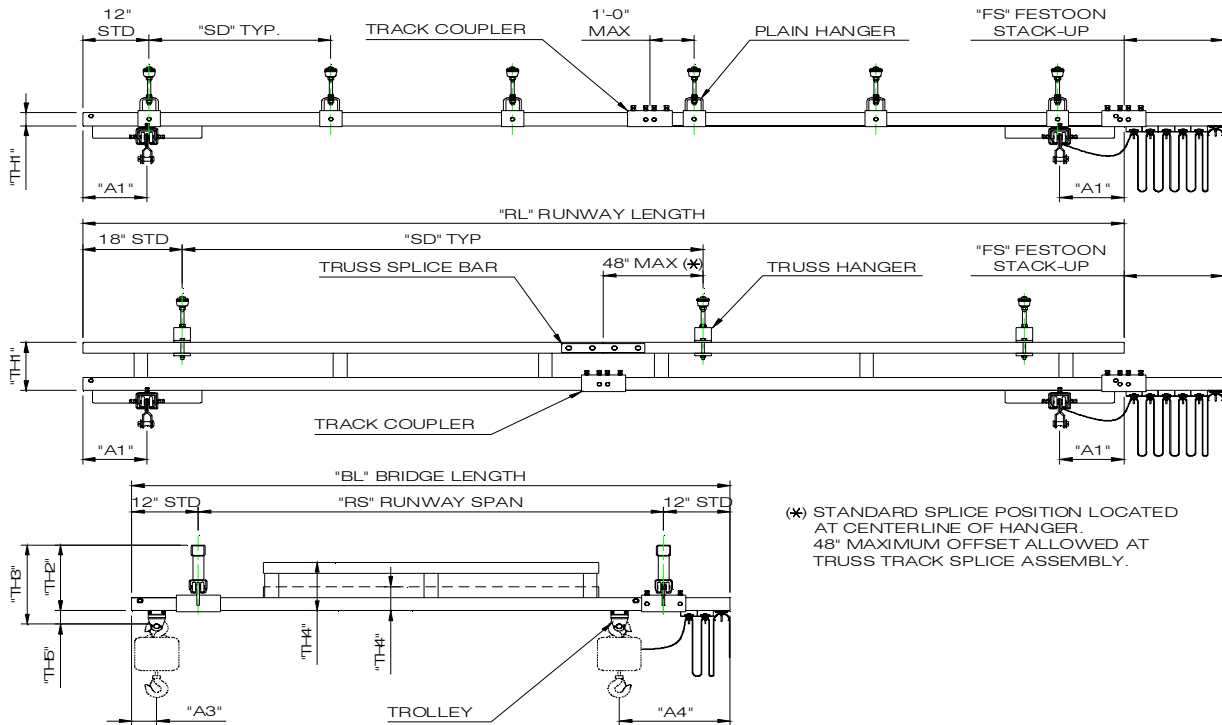
Bridge Length (B L)	Runway Length (R L)	MODEL NUMBER CAP C BL RL SD	Track Series	BRIDGE DIMENSIONS							RUNWAY DIMENSIONS				TOTAL HANGER POINTS
				TH2	TH3	TH4	TH5	A3	A4	RS	SD (Max)	TH1	A1	FS	
23' - 0	23' - 0	500 - C - 23 - 23 - 06	500	5 3/4"	8 3/8"	9 7/8	2 5/8"	4 7/8"	19 7/8"	21' - 0	6'-0	2 3/8"	11 3/8"	12"	10
		500 - C - 23 - 23 - 20		12 7/8"	15 1/2"						20'-0	9 1/2"			4
	28' - 0	500 - C - 23 - 28 - 25		12 7/8"	15 1/2"						25'-0	9 1/2"		4	
		33' - 0		500 - C - 23 - 33 - 06	5 3/4"						8 3/8"	6'-0		2 3/8"	18"
	500 - C - 23 - 33 - 20			12 7/8"	15 1/2"						20'-0	9 1/2"		6	
	33' - 0	500 - C - 23 - 33 - 30		12 7/8"	15 1/2"						30'-0	9 1/2"		4	
		43' - 0		500 - C - 23 - 43 - 06	5 3/4"						8 3/8"	6'-0		2 3/8"	24"
	500 - C - 23 - 43 - 20			12 7/8"	15 1/2"						20'-0	9 1/2"		6	
	53' - 0	500 - C - 23 - 53 - 06		5 3/4"	8 3/8"						6'-0	2 3/8"		36"	20
		500 - C - 23 - 53 - 20		12 7/8"	15 1/2"						20'-0	9 1/2"			8
	63' - 0	500 - C - 23 - 63 - 25		12 7/8"	15 1/2"						25'-0	9 1/2"		6	
		63' - 0		500 - C - 23 - 63 - 06	5 3/4"						8 3/8"	6'-0		2 3/8"	54"
	500 - C - 23 - 63 - 20			12 7/8"	15 1/2"						20'-0	9 1/2"		8	
	63' - 0	500 - C - 23 - 63 - 30		12 7/8"	15 1/2"						30'-0	9 1/2"		6	
		78' - 0		500 - C - 23 - 78 - 25	12 7/8"						15 1/2"	25'-0		9 1/2"	8
	83' - 0			500 - C - 23 - 83 - 06	5 3/4"						8 3/8"	6'-0		2 3/8"	54"
		500 - C - 23 - 83 - 20		12 7/8"	15 1/2"						20'-0	9 1/2"		10	
	93' - 0	500 - C - 23 - 93 - 30		12 7/8"	15 1/2"						30'-0	9 1/2"		8	
		103' - 0		500 - C - 23 - 103 - 06	5 3/4"						8 3/8"	6'-0		2 3/8"	54"
	500 - C - 23 - 103 - 20			12 7/8"	15 1/2"						20'-0	9 1/2"		12	
103' - 0	500 - C - 23 - 103 - 25	12 7/8"	15 1/2"	25'-0	9 1/2"	10									
	123' - 0	500 - C - 23 - 123 - 30	12 7/8"	15 1/2"	30'-0	9 1/2"	63"	10							

Note: A1 Dimension is 22 1/4" when using extended end truck.

(01-01-07)

CEILING MOUNTED CRANES

DIMENSIONAL DATA



Weights & Dimensions are approximate and may change without notice

500# CAPACITY

28' - 0" BRIDGE LENGTH

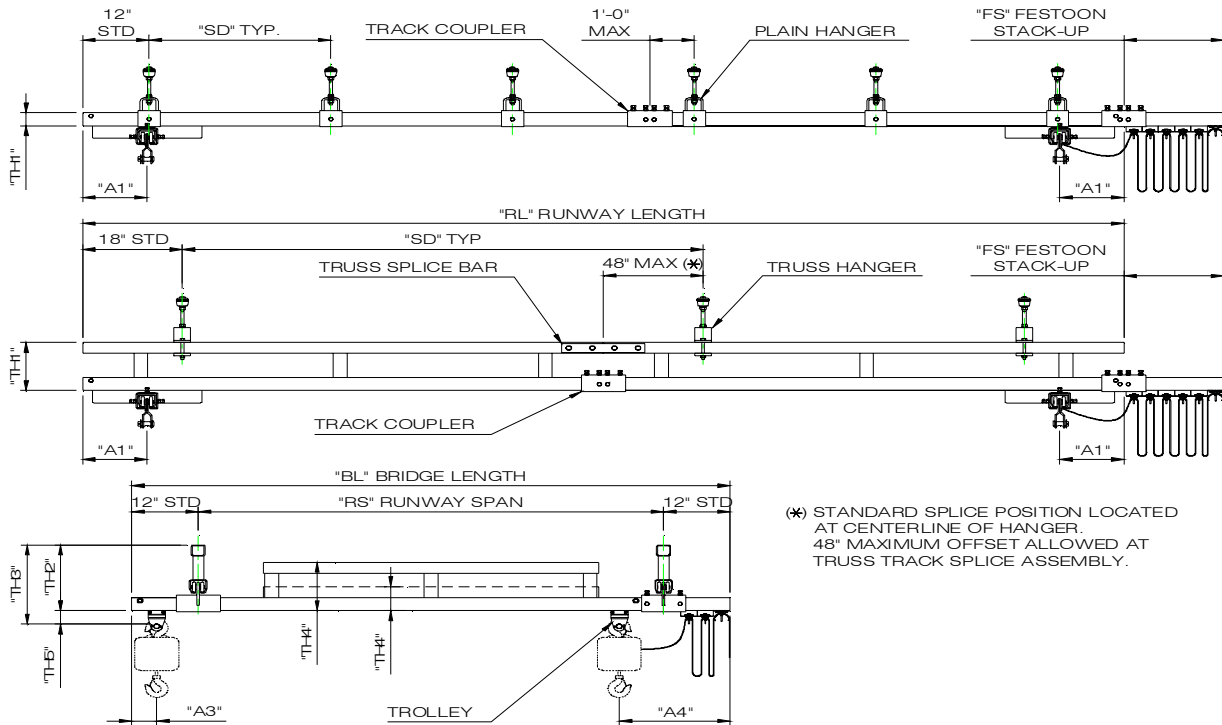
Bridge Length (B L)	Runway Length (R L)	MODEL NUMBER CAP C BL RL SD	Track Series	BRIDGE DIMENSIONS							RUNWAY DIMENSIONS				TOTAL HANGER POINTS	
				TH2	TH3	TH4	TH5	A3	A4	RS	SD (Max)	TH1	A1	FS		
28' - 0	23' - 0	500 - C - 28 - 23 - 06	500	8"	10 5/8"	9 7/8	2 5/8"	4 7/8"	23 3/8"	26' - 0	6'-0	2 3/8"	22 1/4"	12"	10	
		500 - C - 28 - 23 - 20		15 1/8"	17 3/4"						20'-0	9 1/2"		4		
	28' - 0	500 - C - 28 - 28 - 25		15 1/8"	17 3/4"						25'-0	9 1/2"		4		
	33' - 0	500 - C - 28 - 33 - 06		8"	10 5/8"						6'-0	2 3/8"		18"	14	
		500 - C - 28 - 33 - 20		15 1/8"	17 3/4"						20'-0	9 1/2"		6		
	33' - 0	500 - C - 28 - 33 - 30		15 1/8"	17 3/4"						30'-0	9 1/2"		4		
		43' - 0		500 - C - 28 - 43 - 06	8"						10 5/8"	6'-0		2 3/8"	24"	16
	500 - C - 28 - 43 - 20			15 1/8"	17 3/4"						20'-0	9 1/2"		6		
	53' - 0	500 - C - 28 - 53 - 06		8"	10 5/8"						6'-0	2 3/8"		36"	20	
		500 - C - 28 - 53 - 20		15 1/8"	17 3/4"						20'-0	9 1/2"			8	
	63' - 0	500 - C - 28 - 63 - 25		15 1/8"	17 3/4"						25'-0	9 1/2"			6	
		63' - 0		500 - C - 28 - 63 - 06	8"						10 5/8"	6'-0			2 3/8"	24
	500 - C - 28 - 63 - 20			15 1/8"	17 3/4"						20'-0	9 1/2"			8	
	63' - 0	500 - C - 28 - 63 - 30		15 1/8"	17 3/4"						30'-0	9 1/2"			6	
		78' - 0		500 - C - 28 - 78 - 25	15 1/8"						17 3/4"	25'-0			9 1/2"	8
	83' - 0			500 - C - 28 - 83 - 06	8"						10 5/8"	6'-0			2 3/8"	54"
		500 - C - 28 - 83 - 20		15 1/8"	17 3/4"						20'-0	9 1/2"			10	
	93' - 0	500 - C - 28 - 93 - 30		15 1/8"	17 3/4"						30'-0	9 1/2"			8	
		103' - 0		500 - C - 28 - 103 - 06	8"						10 5/8"	6'-0			2 3/8"	
	500 - C - 28 - 103 - 20			15 1/8"	17 3/4"						20'-0	9 1/2"			12	
103' - 0	500 - C - 28 - 103 - 25	15 1/8"	17 3/4"	25'-0	9 1/2"	10										
	123' - 0	500 - C - 28 - 123 - 30	15 1/8"	17 3/4"	30'-0	9 1/2"	63"	10								

Note: A1 Dimension is 22 1/4" when using extended end truck.

(01-01-07)

CEILING MOUNTED CRANES

DIMENSIONAL DATA



Weights & Dimensions are approximate and may change without notice

500# CAPACITY

34' - 0" BRIDGE LENGTH

Bridge Length (B L)	Runway Length (R L)	MODEL NUMBER CAP C BL RL SD	Track Series	BRIDGE DIMENSIONS							RUNWAY DIMENSIONS				TOTAL HANGER POINTS
				TH2	TH3	TH4	TH5	A3	A4	RS	SD (Max)	TH1	A1	FS	
34' - 0	28' - 0	500 - C - 34 - 28 - 25	500	15 1/8"	17 3/4"	9 7/8	2 5/8"	4 7/8"	24 3/8"	32' - 0	25'-0	9 1/2"	18"	4	
	33' - 0	500 - C - 34 - 33 - 06		8"	10 5/8"						6'-0	2 3/8"			14
		500 - C - 34 - 33 - 20		15 1/8"	17 3/4"						20'-0	9 1/2"		6	
	33' - 0	500 - C - 34 - 33 - 30		15 1/8"	17 3/4"						30'-0	9 1/2"			4
		43' - 0		500 - C - 34 - 43 - 06	8"						10 5/8"	6'-0	2 3/8"	24"	
	500 - C - 34 - 43 - 20			15 1/8"	17 3/4"						20'-0	9 1/2"	6		
	53' - 0	500 - C - 34 - 53 - 06		8"	10 5/8"						6'-0	2 3/8"		20	
		500 - C - 34 - 53 - 20		15 1/8"	17 3/4"						20'-0	9 1/2"	8		
	63' - 0	500 - C - 34 - 63 - 06		15 1/8"	17 3/4"						25'-0	9 1/2"		36"	6
		500 - C - 34 - 63 - 20		8"	10 5/8"						6'-0	2 3/8"	24		
	63' - 0	500 - C - 34 - 63 - 30		15 1/8"	17 3/4"						20'-0	9 1/2"		8	
		78' - 0		500 - C - 34 - 78 - 25	15 1/8"						17 3/4"	30'-0	9 1/2"		6
	83' - 0			500 - C - 34 - 83 - 06	15 1/8"						17 3/4"	25'-0	9 1/2"	8	
		500 - C - 34 - 83 - 20		8"	10 5/8"						6'-0	2 3/8"	30		
	93' - 0	500 - C - 34 - 93 - 30		15 1/8"	17 3/4"						20'-0	9 1/2"		10	
		103' - 0		500 - C - 34 - 103 - 06	15 1/8"						17 3/4"	30'-0	9 1/2"		54"
500 - C - 34 - 103 - 20	8"		10 5/8"	6'-0	2 3/8"	38									
500 - C - 34 - 103 - 25	15 1/8"		17 3/4"	20'-0	9 1/2"		12								
500 - C - 34 - 123 - 30	15 1/8"		17 3/4"	25'-0	9 1/2"	10									
123' - 0	500 - C - 34 - 123 - 30	15 1/8"	17 3/4"	30'-0	9 1/2"		63"	10							

Note: A1 Dimension is 22 1/4" when using extended end truck.

(01-01-07)