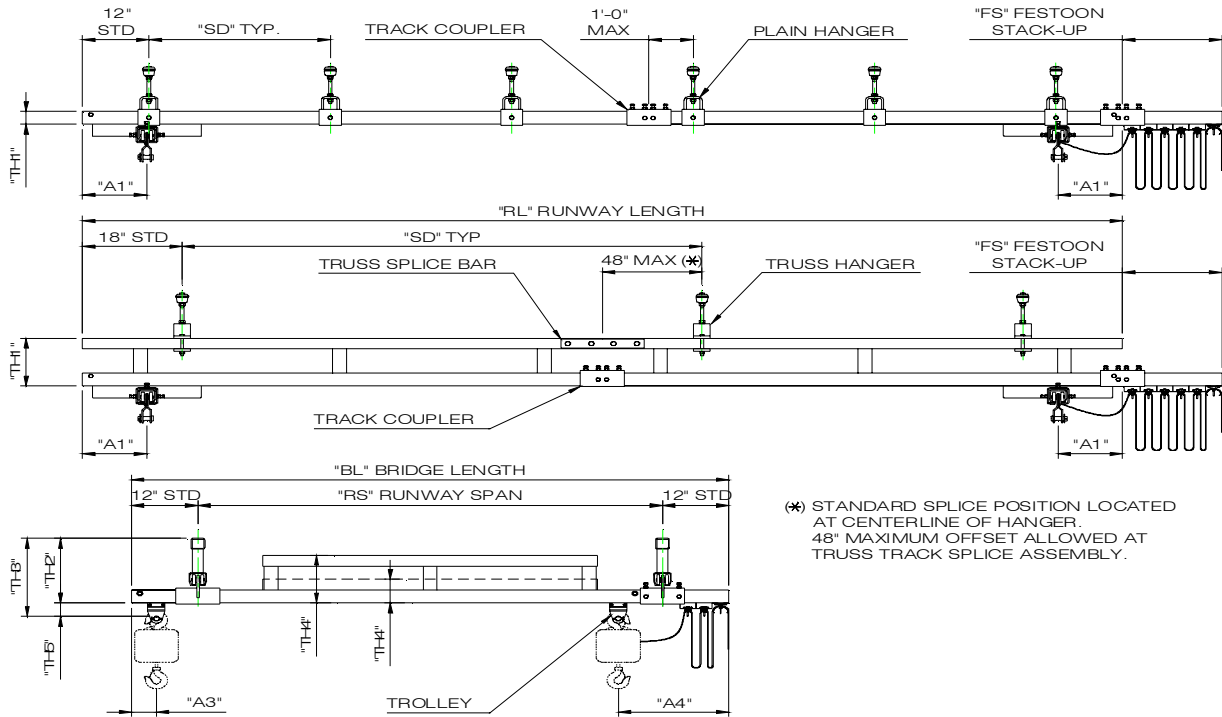


# CEILING MOUNTED CRANES

# DIMENSIONAL DATA



(\*) STANDARD SPLICE POSITION LOCATED AT CENTERLINE OF HANGER. 48" MAXIMUM OFFSET ALLOWED AT TRUSS TRACK SPLICE ASSEMBLY.

Weights & Dimensions are approximate and may change without notice

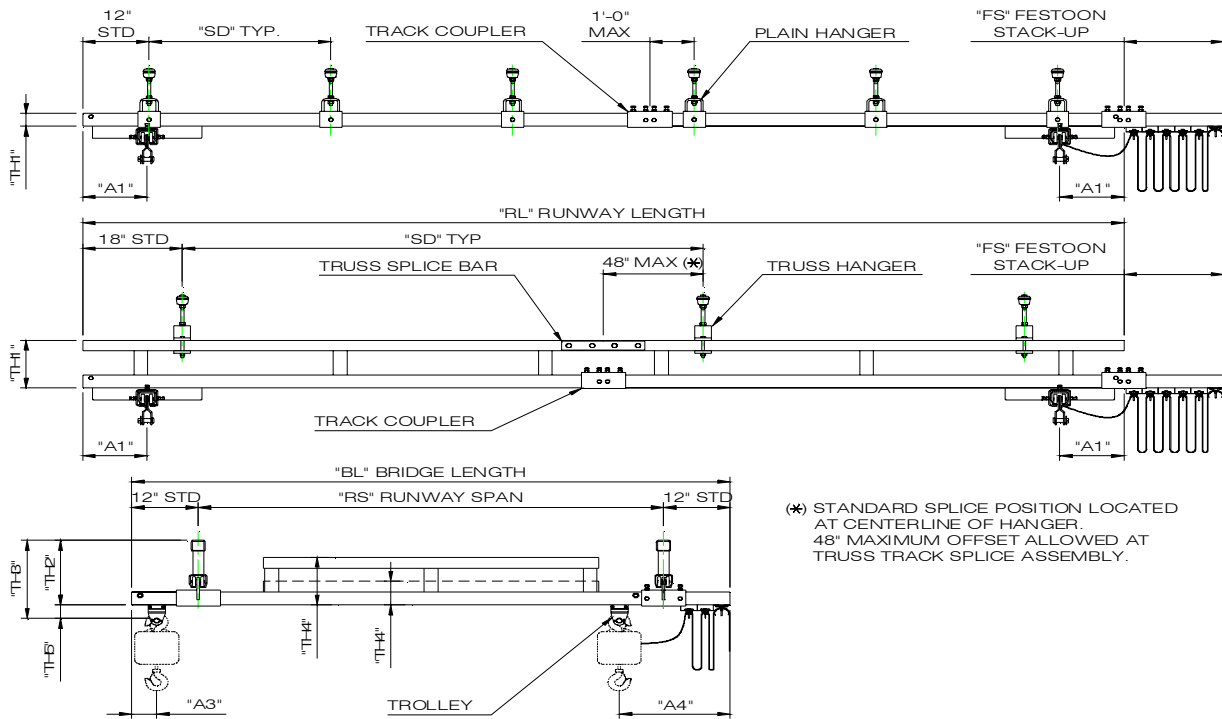
## 4000# CAPACITY 15'- 0" BRIDGE LENGTH

Bridge Length (B L)	Runway Length (R L)	MODEL NUMBER CAP C BL RL SD	Track Series	BRIDGE DIMENSIONS						RUNWAY DIMENSIONS				TOTAL HANGER POINTS				
				TH2	TH3	TH4	TH5	A3	A4	RS	SD (Max)	TH1	A1		FS			
15' - 0	23' - 0	4000 - C - 15 - 23 - 06	2000	13 1/8"	18 3/8"	8 3/8"	4"	18 5/8"	39 1/8"	13' - 0	6'-0	4 3/8"	12"	10				
		4000 - C - 15 - 23 - 20		22 3/4"	28"						20'-0	14"		4				
	28' - 0	4000 - C - 15 - 28 - 25		22 3/4"	28"						25'-0	14"	18"	4				
		33' - 0		4000 - C - 15 - 33 - 06	13 1/8"						18 3/8"	6'-0		4 3/8"	14			
	4000 - C - 15 - 33 - 20			22 3/4"	28"						20'-0	14"	6					
	43' - 0	4000 - C - 15 - 43 - 06		13 1/8"	18 3/8"						6'-0	4 3/8"	24"	16				
		4000 - C - 15 - 43 - 20		22 3/4"	28"						8 3/8"	4"		18 5/8"	39 1/8"	13' - 0	6'-0	4 3/8"
	53' - 0	4000 - C - 15 - 53 - 06		13 1/8"	18 3/8"						6'-0	4 3/8"	36"	20				
		4000 - C - 15 - 53 - 20		22 3/4"	28"						20'-0	14"		8				
	63' - 0	4000 - C - 15 - 53 - 25		22 3/4"	28"						25'-0	14"	36"	6				
		63' - 0		4000 - C - 15 - 63 - 06	13 1/8"						18 3/8"	6'-0		4 3/8"	24			
	4000 - C - 15 - 63 - 20			22 3/4"	28"						20'-0	14"	8					
	78' - 0	4000 - C - 15 - 78 - 25		22 3/4"	28"						25'-0	14"	54"	8				
	83' - 0	4000 - C - 15 - 83 - 06		13 1/8"	18 3/8"						6'-0	4 3/8"		54"	30			
		4000 - C - 15 - 83 - 20		22 3/4"	28"						20'-0	14"	10					
	103' - 0	4000 - C - 15 - 103 - 06		13 1/8"	18 3/8"						6'-0	4 3/8"	54"	38				
				22 3/4"	28"						20'-0	14"		12				
				22 3/4"	28"						25'-0	14"		10				

(01-01-07)

# CEILING MOUNTED CRANES

# DIMENSIONAL DATA



Weights & Dimensions are approximate and may change without notice

## 4000# CAPACITY

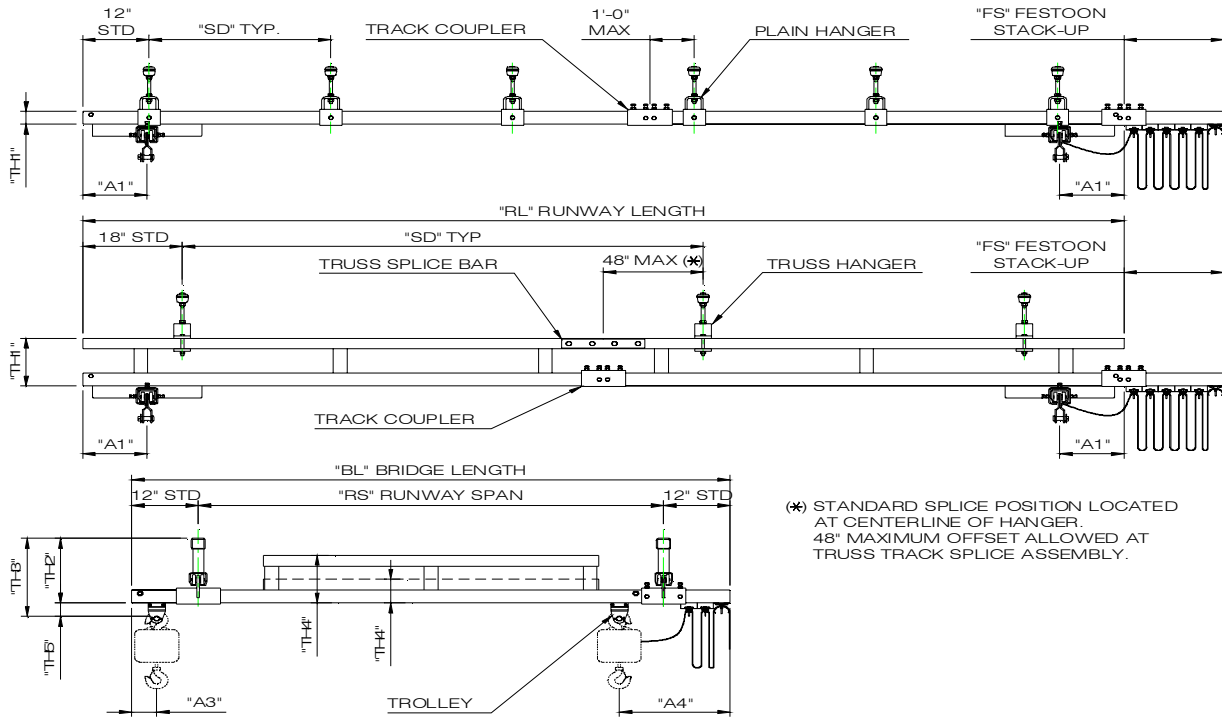
## 20' - 0" BRIDGE LENGTH

Bridge Length (B L)	Runway Length (R L)	MODEL NUMBER CAP C BL RL SD	Track Series	BRIDGE DIMENSIONS							RUNWAY DIMENSIONS				TOTAL HANGER POINTS			
				TH2	TH3	TH4	TH5	A3	A4	RS	SD (Max)	TH1	A1	FS				
20' - 0	23' - 0	4000 - C - 20 - 23 - 06	2000	13 1/8"	18 3/8"	12"	4"	18 5/8"	39 1/8"	18' - 0	6'-0	4 3/8"	12"	10				
		4000 - C - 20 - 23 - 20		22 3/4"	28"						20'-0	14"			18"	4		
	28' - 0	4000 - C - 20 - 28 - 25		22 3/4"	28"						25'-0	14"	18"	4				
		33' - 0		4000 - C - 20 - 33 - 06	13 1/8"						18 3/8"	6'-0			4 3/8"	18"	14	
	4000 - C - 20 - 33 - 20			22 3/4"	28"						20'-0	14"	36"	6				
	43' - 0	4000 - C - 20 - 43 - 06		13 1/8"	18 3/8"						6'-0	4 3/8"			24"	16		
		4000 - C - 20 - 43 - 20		22 3/4"	28"						12"	4"	18 5/8"	39 1/8"			18' - 0	6'-0
	53' - 0	4000 - C - 20 - 53 - 06		13 1/8"	18 3/8"						6'-0	4 3/8"	36"	20				
		4000 - C - 20 - 53 - 20		22 3/4"	28"						20'-0	14"			8			
		63' - 0		4000 - C - 20 - 63 - 06	13 1/8"						18 3/8"	6'-0				4 3/8"	24	
				4000 - C - 20 - 63 - 20	22 3/4"						28"	20'-0				14"		8
	78' - 0	4000 - C - 20 - 78 - 25		22 3/4"	28"						25'-0	14"	8					
	83' - 0	4000 - C - 20 - 83 - 06		13 1/8"	18 3/8"						6'-0	4 3/8"		30				
		4000 - C - 20 - 83 - 20		22 3/4"	28"						20'-0	14"	54"		10			
	103' - 0	4000 - C - 20 - 103 - 06		13 1/8"	18 3/8"						6'-0	4 3/8"		38				
		4000 - C - 20 - 103 - 20		22 3/4"	28"						20'-0	14"	12					
4000 - C - 20 - 103 - 25		22 3/4"	28"	25'-0	14"	10												

(01-01-07)

# CEILING MOUNTED CRANES

# DIMENSIONAL DATA



Weights & Dimensions are approximate and may change without notice

## 4000# CAPACITY

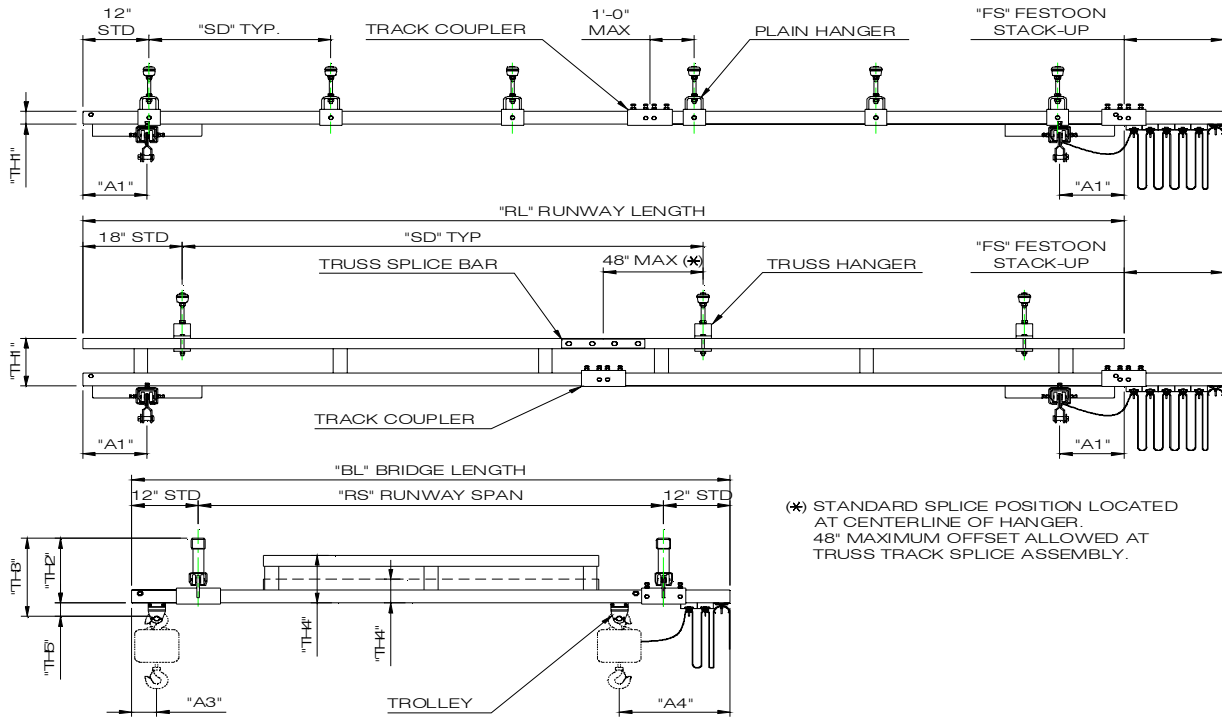
## 23' - 0" BRIDGE LENGTH

Bridge Length (B L)	Runway Length (R L)	MODEL NUMBER CAP C BL RL SD	Track Series	BRIDGE DIMENSIONS							RUNWAY DIMENSIONS				TOTAL HANGER POINTS				
				TH2	TH3	TH4	TH5	A3	A4	RS	SD (Max)	TH1	A1	FS					
23' - 0	23' - 0	4000 - C - 23 - 23 - 06	2000	16"	4"	18 5/8"	39 1/8"	21' - 0	21' - 0	32 5/8"	6'-0	4 3/8"	12"	10					
		4000 - C - 23 - 23 - 20										22 3/4"		28"	20'-0	14"	4		
	28' - 0	4000 - C - 23 - 28 - 25										22 3/4"		28"	25'-0	14"	4		
		33' - 0										4000 - C - 23 - 33 - 06		13 1/8"	18 3/8"	6'-0	4 3/8"	18"	14
	4000 - C - 23 - 33 - 20											22 3/4"		28"	20'-0	14"	6		
	43' - 0	4000 - C - 23 - 43 - 06										13 1/8"		18 3/8"	6'-0	4 3/8"	24"	16	
		4000 - C - 23 - 43 - 20										22 3/4"		28"	20'-0	14"		6	
	53' - 0	4000 - C - 23 - 53 - 06										13 1/8"		18 3/8"	6'-0	4 3/8"	36"	20	
		4000 - C - 23 - 53 - 20										22 3/4"		28"	20'-0	14"		8	
		63' - 0										4000 - C - 23 - 53 - 25		22 3/4"	28"	25'-0		14"	6
												4000 - C - 23 - 63 - 06		13 1/8"	18 3/8"	6'-0		4 3/8"	24
	4000 - C - 23 - 63 - 20	22 3/4"										28"		20'-0	14"	8			
	78' - 0	4000 - C - 23 - 78 - 25										22 3/4"		28"	25'-0	14"	8		
	83' - 0	4000 - C - 23 - 83 - 06										13 1/8"		18 3/8"	6'-0	4 3/8"	54"	30	
		4000 - C - 23 - 83 - 20										22 3/4"		28"	20'-0	14"		10	
	103' - 0	4000 - C - 23 - 103 - 06										13 1/8"		18 3/8"	6'-0	4 3/8"	38		
		4000 - C - 23 - 103 - 20										22 3/4"		28"	20'-0	14"	12		
		4000 - C - 23 - 103 - 25										22 3/4"		28"	25'-0	14"	10		

(01-01-07)

# CEILING MOUNTED CRANES

# DIMENSIONAL DATA



Weights & Dimensions are approximate and may change without notice

## 4000# CAPACITY

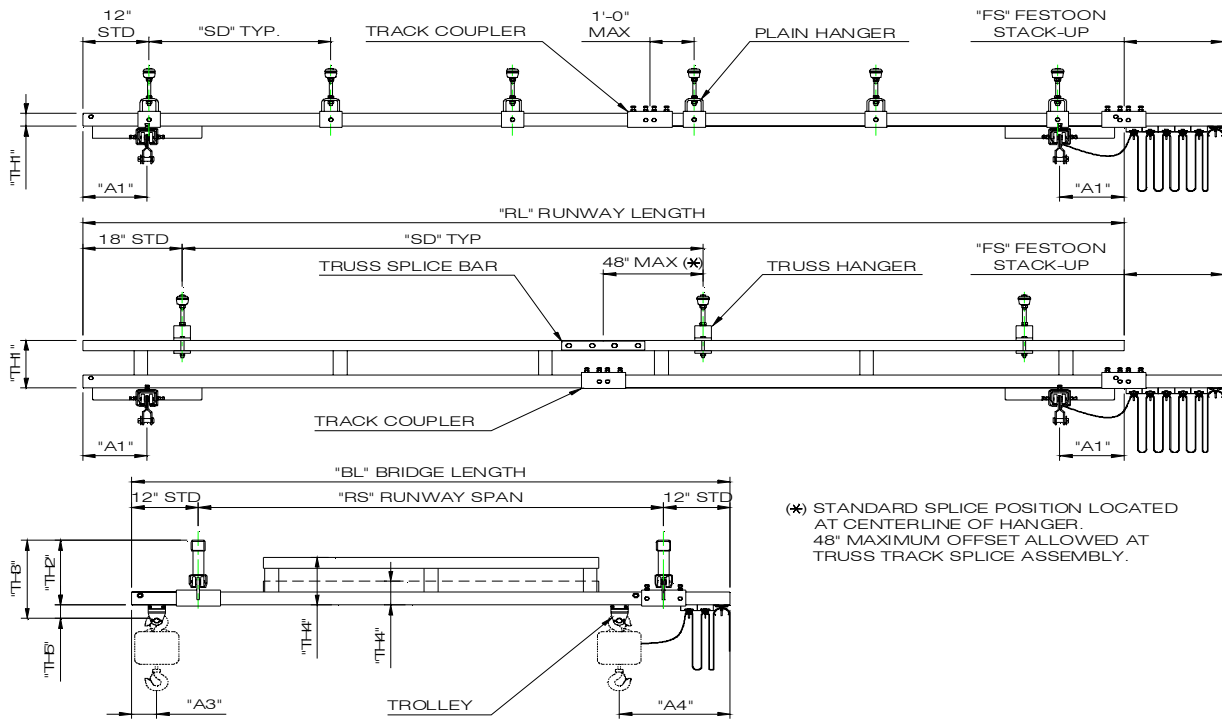
## 28' - 0" BRIDGE LENGTH

Bridge Length (B L)	Runway Length (R L)	MODEL NUMBER CAP C BL RL SD	Track Series	BRIDGE DIMENSIONS							RUNWAY DIMENSIONS				TOTAL HANGER POINTS
				TH2	TH3	TH4	TH5	A3	A4	RS	SD (Max)	TH1	A1	FS	
28' - 0	23' - 0	4000 - C - 28 - 23 - 06	2000	13 1/8"	18 3/8"	18"	4"	18 5/8"	39 1/8"	26' - 0	6'-0	4 3/8"	32 5/8"	12"	10
		4000 - C - 28 - 23 - 20		22 3/4"	28"						20'-0	14"			4
	28' - 0	4000 - C - 28 - 28 - 25		22 3/4"	28"						25'-0	14"		4	
	33' - 0	4000 - C - 28 - 33 - 06		13 1/8"	18 3/8"						6'-0	4 3/8"		18"	14
		4000 - C - 28 - 33 - 20		22 3/4"	28"						20'-0	14"			6
	43' - 0	4000 - C - 28 - 43 - 06		13 1/8"	18 3/8"						6'-0	4 3/8"		24"	16
		4000 - C - 28 - 43 - 20		22 3/4"	28"						20'-0	14"			6
	53' - 0	4000 - C - 28 - 53 - 06		13 1/8"	18 3/8"						6'-0	4 3/8"		36"	20
		4000 - C - 28 - 53 - 20		22 3/4"	28"						20'-0	14"			8
		4000 - C - 28 - 53 - 25		22 3/4"	28"						25'-0	14"			6
		4000 - C - 28 - 53 - 25		13 1/8"	18 3/8"						6'-0	4 3/8"			24
	4000 - C - 28 - 63 - 06	22 3/4"		28"	20'-0						14"	8			
	78' - 0	4000 - C - 28 - 78 - 25		22 3/4"	28"						25'-0	14"		8	
		4000 - C - 28 - 83 - 06		13 1/8"	18 3/8"						6'-0	4 3/8"			30
	4000 - C - 28 - 83 - 20	22 3/4"		28"	20'-0						14"	54"		10	
	103' - 0	4000 - C - 28 - 103 - 06		13 1/8"	18 3/8"						6'-0			4 3/8"	38
4000 - C - 28 - 103 - 20		22 3/4"	28"	20'-0	14"	12									
4000 - C - 28 - 103 - 25		22 3/4"	28"	25'-0	14"	10									

(01-01-07)

# CEILING MOUNTED CRANES

# DIMENSIONAL DATA



(\* STANDARD SPLICE POSITION LOCATED AT CENTERLINE OF HANGER. 48" MAXIMUM OFFSET ALLOWED AT TRUSS TRACK SPLICE ASSEMBLY.

Weights & Dimensions are approximate and may change without notice

## 4000# CAPACITY 34' - 0" BRIDGE LENGTH

Bridge Length (B L)	Runway Length (R L)	MODEL NUMBER CAP C BL RL SD	Track Series	BRIDGE DIMENSIONS							RUNWAY DIMENSIONS				TOTAL HANGER POINTS		
				TH2	TH3	TH4	TH5	A3	A4	RS	SD (Max)	TH1	A1	FS			
34' - 0	28' - 0	4000 - C - 34 - 28 - 25	2000	22 3/4"	28"								25'-0	14"		4	
	33' - 0	4000 - C - 34 - 33 - 06		13 1/8"	18 3/8"									6'-0	4 3/8"	18"	14
		4000 - C - 34 - 33 - 20		22 3/4"	28"									20'-0	14"		6
	43' - 0	4000 - C - 34 - 43 - 06		13 1/8"	18 3/8"									6'-0	4 3/8"	24"	16
		4000 - C - 34 - 43 - 20		22 3/4"	28"	19 1/2"	4"	18 5/8"	39 1/8"	26' - 0				20'-0	14"	32 5/8"	6
	53' - 0	4000 - C - 34 - 53 - 06		13 1/8"	18 3/8"									6'-0	4 3/8"		20
		4000 - C - 34 - 53 - 20		22 3/4"	28"									20'-0	14"		8
		4000 - C - 34 - 53 - 25		22 3/4"	28"									25'-0	14"		6
				4000 - C - 34 - 53 - 25	22 3/4"	28"									20'-0	14"	36"
	63' - 0	4000 - C - 34 - 63 - 06		13 1/8"	18 3/8"									6'-0	4 3/8"		24
		4000 - C - 34 - 63 - 20		22 3/4"	28"									20'-0	14"		8
	78' - 0	4000 - C - 34 - 78 - 25		22 3/4"	28"									25'-0	14"		8
	83' - 0	4000 - C - 34 - 83 - 06		13 1/8"	18 3/8"									6'-0	4 3/8"		30
		4000 - C - 34 - 83 - 20		22 3/4"	28"									20'-0	14"	54"	10
	103' - 0	4000 - C - 34 - 103 - 06		13 1/8"	18 3/8"									6'-0	4 3/8"		38
		4000 - C - 34 - 103 - 20		22 3/4"	28"									20'-0	14"		12
4000 - C - 34 - 103 - 25		22 3/4"	28"									25'-0	14"		10		

(01-01-07)