

# BRIDGES

Bridges Are Painted Yellow.

For non-standard bridge lengths use the next longer length for pricing purposes.

If installing multiple bridges on one runway, the use of a floating buffer may be required. Refer to page 11 of 15 for floating buffers.

PRICE INCLUDES: Bridge, Hoist-Trolley, End Trucks, End Stops Bumpers with hardware.

NOT INCLUDED: Festooning (cable, hose, festoon trolleys, or clamps).

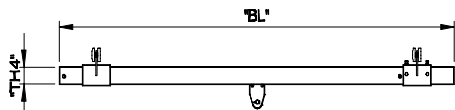
## PART NUMBER EXPLANATION:

LT - 02 - B - 08



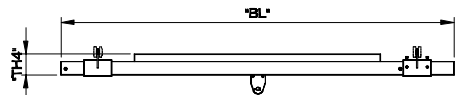
Bridge Length  
Bridge  
Capacity (02 = 250#)  
Track Series

### BRIDGE ASSEMBLY



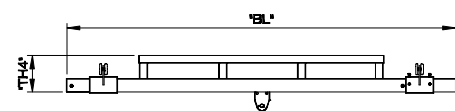
|        |          | TRACK SERIES  |          |          |       |
|--------|----------|---------------|----------|----------|-------|
| LENGTH | CAPACITY | 250# --- 500# | 1000#    | 2000#    | 4000# |
| 8'-0   | PART NO. | LT-05B08      | LT-10B08 | LT-20B08 | --    |
|        | TH4      | 2 3/8"        | 3"       | 4 3/8"   | --    |
|        | WEIGHT   | 67#           | 109#     | 195#     | --    |
|        |          |               |          |          |       |
| 10'-0  | PART NO. | -----         | --       | LT-20B10 | --    |
|        | TH4      | -----         | --       | 4 3/8"   | --    |
|        | WEIGHT   | -----         | --       | 217#     | --    |
|        |          |               |          |          |       |

### BRIDGE ASSEMBLY



|        |          | TRACK SERIES  |          |          |       |
|--------|----------|---------------|----------|----------|-------|
| LENGTH | CAPACITY | 250# --- 500# | 1000#    | 2000#    | 4000# |
| 10'-0  | PART NO. | LT-05B10      | LT-10B10 | --       | --    |
|        | TH4      | 4 3/8"        | 5"       | --       | --    |
|        | WEIGHT   | 93#           | 147#     | --       | --    |
|        |          |               |          |          |       |
| 15'-0  | PART NO. | -----         | --       | LT-20B15 | --    |
|        | TH4      | -----         | --       | 6 7/8"   | --    |
|        | WEIGHT   | -----         | --       | 332#     | --    |
|        |          |               |          |          |       |

### BRIDGE ASSEMBLY



|        |          | TRACK SERIES  |          |          |          |
|--------|----------|---------------|----------|----------|----------|
| LENGTH | CAPACITY | 250# --- 500# | 1000#    | 2000#    | 4000#    |
| 15'-0  | PART NO. | LT-05B15      | LT-10B15 | ---      | LT-40B15 |
|        | TH4      | 5 3/8"        | 6"       | ---      | 8 3/8"   |
|        | WEIGHT   | 152#          | 208#     | ---      | 703#     |
|        |          |               |          |          |          |
| 20'-0  | PART NO. | LT-05B20      | LT-10B20 | LT-20B20 | LT-40B20 |
|        | TH4      | 6 3/8"        | 7"       | 8 3/8"   | 12       |
|        | WEIGHT   | 196#          | 264#     | 452#     | 825#     |
|        |          |               |          |          |          |
| 23'-0  | PART NO. | LT-05B23      | LT-10B23 | LT-20B23 | LT-40B23 |
|        | TH4      | 9 7/8"        | 11"      | 12"      | 16"      |
|        | WEIGHT   | 223#          | 297#     | 509#     | 893#     |
|        |          |               |          |          |          |
| 28'-0  | PART NO. | LT-05B28      | LT-10B28 | LT-20B28 | LT-40B28 |
|        | TH4      | 9 7/8"        | 11"      | 13 3/8"  | 18"      |
|        | WEIGHT   | 343#          | 508#     | 820#     | 1005#    |
|        |          |               |          |          |          |
| 34'-0  | PART NO. | LT-05B34      | LT-10B34 | LT-20B34 | LT-40B34 |
|        | TH4      | 9 7/8"        | 12"      | 14 1/2"  | 19 1/2"  |
|        | WEIGHT   | 402#          | 604#     | 940#     | 1120#    |
|        |          |               |          |          |          |

# MIXED CAPACITY SYSTEMS

Mixed capacity systems allow multiple bridges to be used on a system without de-rating bridges or using bridge buffers. For example, using CraneVeyors mixed capacity end trucks, two 250# bridges, with 250# track, can run in 500# runways, allowing full use of both bridges without overloading the system.

By mixing bridges of different sizes and capacities, mixed capacity systems offer easier movement, reduced dead weight, and reduced cost.

**WARNING: The sum of the capacities of the bridges cannot exceed the capacity of the runways without the addition of buffer assemblies. If in doubt contact the factory.**

Systems having more than two bridges require special festooning arrangements. Refer to page 13 of 15 or consult the factory.

How to figure a price for a mixed capacity system. (Using a 1000# capacity system as an example)

- 1) Start with the base price of the system, capacity, bridge length, and runway length required (capacity = total capacity desired, i.e. 2 - 500# capacity cranes require a 1000# capacity system,
- 2) From this section (page 1) deduct the price of the 1000# capacity bridge.
- 3) From this section (page 1) add the price for 2 - 500# capacity bridges of the proper bridge length. (This Includes: bridge, end trucks, hoist trolley, and end stops.
- 4) Add additional festooning required, using page 14 of 15 of this section for pricing. (This includes flat cable, festoon trolleys, cable clamps, and festoon stack-up section.)
- 5) Add a base charge of \$180 for each bridge added.

**Example:** Required: A 1000# capacity ceiling mounted crane system with two 500# bridges with electric hoists. The bridge length (BL) needs to be 20' long, the runway 63' long, and the hanger support distance (SD) 20'. Both bridges need to be able to travel the full length of the runway.

**Solution:** (1) Calculate the price for a single crane system based on a total system capacity (since both bridge are capable of being in the same span) of 1000#. The Model number with 20' support centers, would be 1000-C-20-63-20 (from Ceiling Mounded Crane section, page 11 of 18), at a price of \$6175.

(2) Deduct the price of the 1000# capacity bridge Cat #LT-10B20 (from page 1 of 15), of \$1204.

(3) Add the price for two 500# capacity bridges Cat # LT-05B20 (from page 1 of 15) of 2 x \$1019 = \$2038.

(4) Add additional festooning as needed (see page 14 of 15, this section), of \$287.

(5) Add 'Base Charge' of (2 x 180) \$360.

Note: To festoon both bridges, cable should be strung from opposite ends of the system. Also, check to determine that the bridges do not exceed the equivalent center load criteria of the runway.

|         |                                       |
|---------|---------------------------------------|
| \$ 6175 | Base Price                            |
| - 1204  | Deduct 1000# Cap. bridge              |
| + 2038  | Add 2 - 500# Cap bridges (2 @ \$1019) |
| + 287   | Festoon adder (use festoon deduct)    |
| + 360   | Add base charge                       |
| \$ 7656 | Total List Price                      |

# RUNWAYS

## Runways are sold as single pieces, not in pairs.

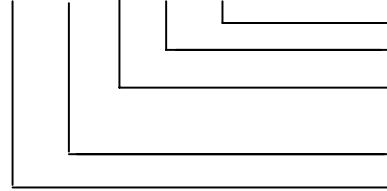
Runways are painted yellow.

For non-standard runway lengths, use the next longer length for pricing purposes.

NOT INCLUDED: hangers, end stops, festoon trolleys, festoon clamps, cable, splice joints, or touch up paint.

## PART NUMBER EXPLANATION:

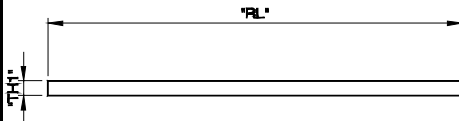
LT - 02 - R - 06 - 10



Runway Length  
 Max. Support Centers  
 R = Trussed Runway  
 P = Plain Track Runway  
 Capacity (02 = 250#)  
 Track Series

## PLAIN STEEL

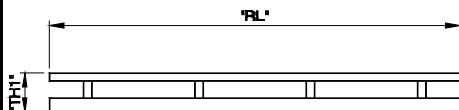
(6'-0 Support Centers)



|            |          | PLAIN STEEL (6' Support Centers) |            |            |            |
|------------|----------|----------------------------------|------------|------------|------------|
| LENGTH (L) | CAPACITY | 250# --- 500#                    | 1000#      | 2000#      | 4000#      |
|            | TH1      | 2 3/8"                           | 3"         | 4 3/8"     | 4 3/8"     |
| 10'-0      | PART NO. | LT05P0610                        | LT10P0610  | LT20P0610  | LT20P0610  |
|            | WEIGHT   | 40#                              | 61#        | 108#       | 108#       |
| 11'-6      | PART NO. | LT05P06116                       | LT10P06116 | LT20P06116 | LT20P06116 |
|            | WEIGHT   | 46#                              | 71#        | 124#       | 124#       |
| 13'-0      | PART NO. | LT05P0613                        | LT10P0613  | LT20P0613  | LT20P0613  |
|            | WEIGHT   | 52#                              | 80#        | 140#       | 140#       |
| 20'-0      | PART NO. | LT05P0620                        | LT10P0620  | LT20P0620  | LT20P0620  |
|            | WEIGHT   | 80#                              | 123#       | 215#       | 215#       |
| 21'-6      | PART NO. | LT05P06216                       | LT10P06216 | LT20P06216 | LT40P06216 |
|            | WEIGHT   | 86#                              | 132#       | 232#       | 232#       |
| 23'-0      | PART NO. | LT05P0623                        | LT10P0623  | LT20P0623  | LT20P0623  |
|            | WEIGHT   | 92#                              | 141#       | 248#       | 248#       |

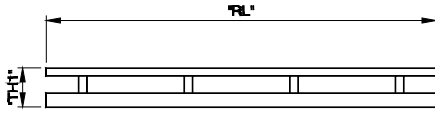
## TRUSSED TRACK

(20' Support Centers)  
 (25' Support Centers)  
 (30' Support Centers)

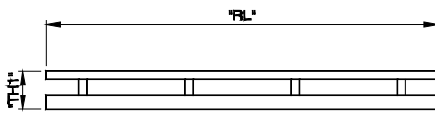


|            |          | TRUSSED STEEL (20' Support Centers) |            |            |            |
|------------|----------|-------------------------------------|------------|------------|------------|
| LENGTH (L) | CAPACITY | 250# --- 500#                       | 1000#      | 2000#      | 4000#      |
|            | TH1      | 9 1/2"                              | 11"        | 12"        | 14"        |
| 10'-0      | PART NO. | LT05R2010                           | LT10R2010  | LT20R2010  | LT40R2010  |
|            | WEIGHT   | 89#                                 | 111#       | 186#       | 233#       |
| 11'-6      | PART NO. | LT05R20116                          | LT10R20116 | LT20R20116 | LT40R20116 |
|            | WEIGHT   | 103#                                | 128#       | 215#       | 271#       |
| 13'-0      | PART NO. | LT05R2013                           | LT10R2013  | LT20R2013  | LT40R2013  |
|            | WEIGHT   | 110#                                | 175#       | 240#       | 250#       |
| 20'-0      | PART NO. | LT05R2020                           | LT10R2020  | LT20R2020  | LT40R2020  |
|            | WEIGHT   | 177#                                | 222#       | 372#       | 467#       |
| 21'-6      | PART NO. | LT05R20216                          | LT10R20216 | LT20R20216 | LT40R20216 |
|            | WEIGHT   | 190#                                | 237#       | 389#       | 499#       |
| 23'-0      | PART NO. | LT05R2023                           | LT10R2023  | LT20R2023  | LT40R2023  |
|            | WEIGHT   | 204#                                | 253#       | 418#       | 537#       |

# RUNWAYS (continued)



|        |          | TRUSSED STEEL (25' Support Centers) |            |            |            |
|--------|----------|-------------------------------------|------------|------------|------------|
| LENGTH | CAPACITY | 250# --- 500#                       | 1000#      | 2000#      | 4000#      |
| (L)    | TH1      | 9 1/2"                              | 11"        | 12"        | 14"        |
| 25'-0  | PART NO. | LT05R2525                           | LT10R2525  | LT20R2525  | LT40R2525  |
|        | WEIGHT   | 228#                                | 351#       | 469#       | 589#       |
| 26'-6  | PART NO. | LT05R25266                          | LT10R25266 | LT20R25266 | LT40R25233 |
|        | WEIGHT   | 243#                                | 373#       | 499#       | 625#       |
| 28'-0  | PART NO. | LT05R2528                           | LT10R2528  | LT20R2528  | LT40R2528  |
|        | WEIGHT   | 255#                                | 393#       | 525#       | 657#       |



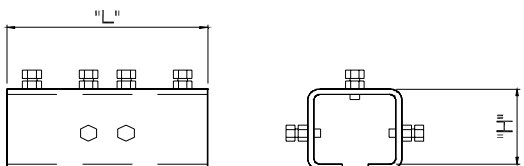
|        |          | TRUSSED STEEL (30' Support Centers) |            |            |            |
|--------|----------|-------------------------------------|------------|------------|------------|
| LENGTH | CAPACITY | 250# --- 500#                       | 1000#      | 2000#      | 4000#      |
| (L)    | TH1      | 9 1/2"                              | 11"        | 12"        | 18"        |
| 30'-0  | PART NO. | LT05R3030                           | LT10R3030  | LT20R3030  | LT40R3030  |
|        | WEIGHT   | 298#                                | 434#       | 571#       | 640#       |
| 31'-6  | PART NO. | LT05R30316                          | LT10R30316 | LT20R30316 | LT40R30316 |
|        | WEIGHT   | 311#                                | 464#       | 598        | 667#       |
| 33'-0  | PART NO. | LT05R3033                           | LT10R3033  | LT20R3033  | LT40R3033  |
|        | WEIGHT   | 327#                                | 477#       | 628#       | 710#       |

# TRACK COUPLER

Track Couplers are painted black.

Both track couplers and truss splices are required when splicing trussed runways or monorails (track couplers can only be used alone on untrussed track). Alignment bolts are shipped loose. Price includes hardware.

## TRACK COUPLER (WITH HARDWARE)

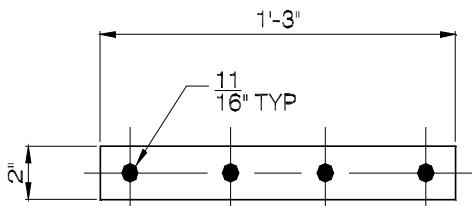


|          |               |         |         |         |
|----------|---------------|---------|---------|---------|
| CAPACITY | 250# --- 500# | 1000#   | 2000#   | 4000#   |
| PART NO. | LT-05TC       | LT-10TC | LT-20TC | LT-20TC |
| H (MAX)  | 2 13/16"      | 3 1/2"  | 4 7/8"  | 4 7/8"  |
| L        | 7"            | 8"      | 9"      | 9"      |
| WEIGHT   | 6#            | 8#      | 17#     | 17#     |

The track splice joint can only be used alone (without the truss splice) for PLAIN STEEL TRACK.

For all Truss type runways, add steel truss plate (from below) to this price.

## TRUSS SPLICE BAR (WITH HARDWARE)



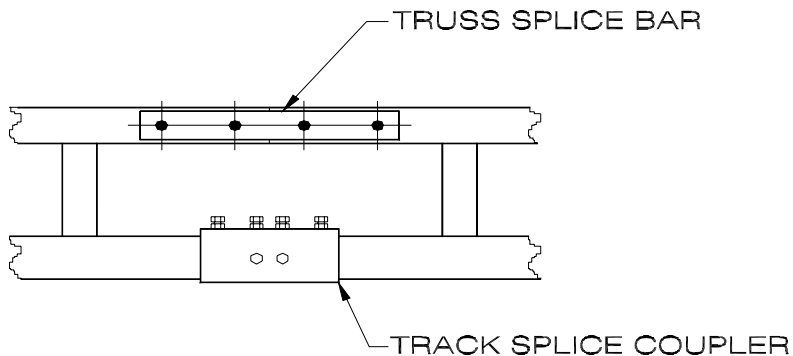
|          |              |
|----------|--------------|
| CAPACITY | 250# - 4000# |
| PART NO. | LT-20SB      |
| PRICE    | \$26         |
| WEIGHT   | 6#           |

Used to connect truss top tubes, and required on all TRUSSED STEEL sections.

Track couplers are also required.

Add the price of the truss splice plate to the track coupler above for both.

When ordering specify runway support distance.



# HANGERS (For Cranes or Monorails)

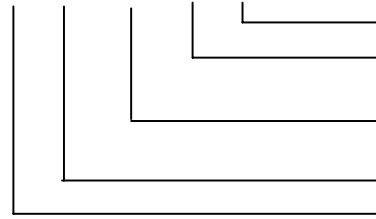
Hanger assemblies are painted black.

Includes beam clamp and hardware where applicable.  
For flange widths greater than 8" use CC type clamp.

Sway bracing (by others) is required, except for flush mount applications.

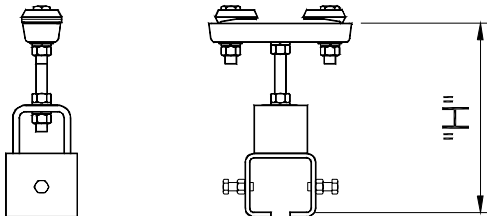
## PART NUMBER EXPLANATION:

LT - 02 - PH - BC - 20



Rod Length  
BC = Beam Clamp  
CC = Channel Clamp  
PH = Plain Hanger  
TH = Truss Hanger  
Capacity (02 = 250#)  
Track Series

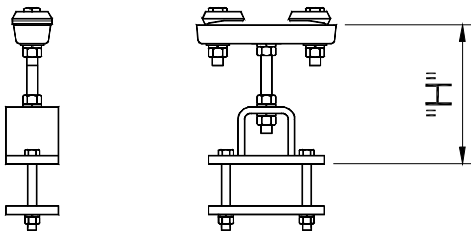
### STANDARD HANGER ASSEMBLY PLAIN STEEL TRACK 250# - 2000#



|         | CAPACITY | 250# --- 500# | 1000#      | 2000#      |
|---------|----------|---------------|------------|------------|
| No Rod  | PART NO. | LTO5PHBC      | LT10PHBC   | LT20PHBC   |
|         | H (Min)  | 8 7/16"       | 9 1/4"     | 10 5/8"    |
|         | WEIGHT   | 10#           | 12#        | 17#        |
|         |          |               |            |            |
| 20" Rod | PART NO. | LTO5PHBC20    | LT10PHBC20 | LT20PHBC20 |
|         | H (Min)  |               |            |            |
|         | WEIGHT   | 12#           | 14#        | 19#        |
|         |          |               |            |            |
| 72" Rod | PART NO. | LTO5PHBC72    | LT10PHBC72 | LT20PHBC72 |
|         | H (Min)  |               |            |            |
|         | WEIGHT   | 17#           | 19#        | 23#        |
|         |          |               |            |            |

Rods are 5/8" diameter.

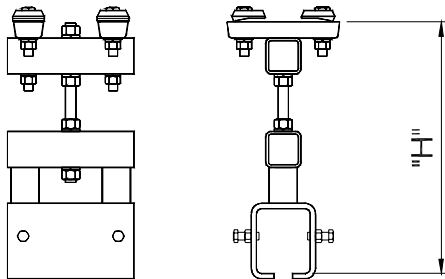
### STANDARD HANGER ASSEMBLY TRUSSED STEEL TRACK 250# - 2000#



|         | CAPACITY | 250# --- 500# | 1000#      | 2000#      |
|---------|----------|---------------|------------|------------|
| No Rod  | PART NO. | LTO5THBC      | LT10THBC   | LT20THBC   |
|         | H (Min)  | 6"            | 6 1/4"     | 6 1/4"     |
|         | WEIGHT   | 11#           | 15#        | 15#        |
|         |          |               |            |            |
| 20" Rod | PART NO. | LTO5HBC20     | LT10THBC20 | LT20THBC20 |
|         | H (Min)  |               |            |            |
|         | WEIGHT   | 13#           | 17#        | 17#        |
|         |          |               |            |            |
| 72" Rod | PART NO. | LTO5HBC72     | LT10THBC72 | LT20THBC72 |
|         | H (Min)  |               |            |            |
|         | WEIGHT   | 18#           | 21#        | 21#        |
|         |          |               |            |            |

Rods are 5/8" diameter.

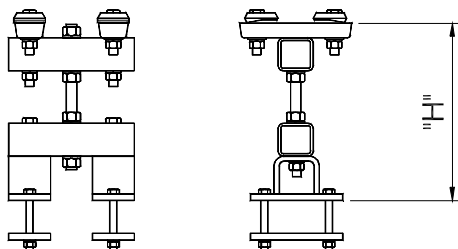
### STANDARD HANGER ASSEMBLY PLAIN STEEL TRACK 4000#



|         | CAPACITY | 4000#       |
|---------|----------|-------------|
| No Rod  | PART NO. | LT40PHBC    |
|         | H (Min)  | 1' - 3 1/2" |
|         | WEIGHT   | 41#         |
|         |          |             |
| 20" Rod | PART NO. | LT40PHBC20  |
|         | H (Min)  |             |
|         | WEIGHT   | 44#         |
|         |          |             |
| 72" Rod | PART NO. | LT40PHBC72  |
|         | H (Min)  |             |
|         | WEIGHT   | 50#         |
|         |          |             |

Rods are 3/4" diameter.

### STANDARD HANGER ASSEMBLY TRUSSED STEEL TRACK 4000#



|         | CAPACITY | 4000#      |
|---------|----------|------------|
| No Rod  | PART NO. | LT40THBC   |
|         | H (Min)  | 11 1/2"    |
|         | WEIGHT   | 41#        |
|         |          |            |
| 20" Rod | PART NO. | LT40THBC20 |
|         | H (Min)  |            |
|         | WEIGHT   | 49#        |
|         |          |            |
| 72" Rod | PART NO. | LT40THBC   |
|         | H (Min)  |            |
|         | WEIGHT   | 50#        |
|         |          |            |

Rods are 3/4" diameter.

(Hanger Pricing Continued  
Next Page)

Weight and dimensions are approximate and may change without notice

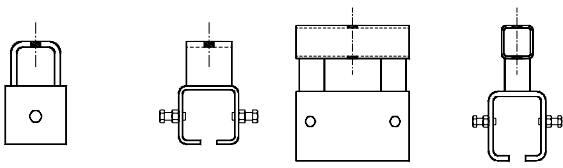
(01-01-07)

Page 6 of 15

**HANGERS (continued)**

(For Cranes or Monorails)

**LOWER HANGER BRACKET  
PLAIN STEEL TRACK**

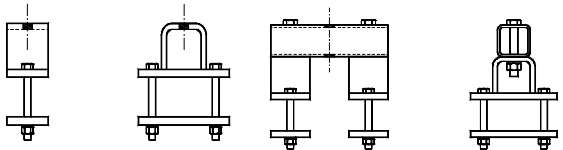


250 - 2000#

4000#

|          |               |          |          |          |
|----------|---------------|----------|----------|----------|
| CAPACITY | 250# --- 500# | 1000#    | 2000#    | 4000#    |
| PART NO. | LT-05PHB      | LT-10PHB | LT-20PHB | LT-40PHB |
| WEIGHT   | 4#            | 6#       | 10#      | 23#      |

**LOWER HANGER BRACKET  
TRUSSED STEEL TRACK**

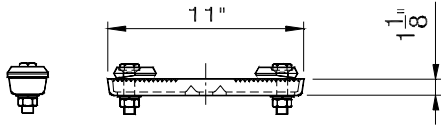


250 - 2000#

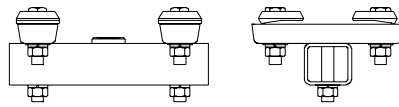
4000#

|          |               |          |          |          |
|----------|---------------|----------|----------|----------|
| CAPACITY | 250# --- 500# | 1000#    | 2000#    | 4000#    |
| PART NO. | LT-05THB      | LT-10THB | LT-20THB | LT-40THB |
| WEIGHT   | 5#            | 9#       | 9#       | 24#      |

**UPPER HANGER BRACKETS**



LT-20BC-1  
LT-20BC-2



LT-40HTB-1  
LT-40HTB-2

|          |              |            |
|----------|--------------|------------|
| CAPACITY | 250# - 2000# | 4000#      |
| PART NO. | LT-20BC-1    | LT-40HTB-1 |
| PART NO. | LT-20BC-2    | LT-40HTB-2 |
| WEIGHT   | 11#          | 37#        |

Brackets fit flange widths up through 8"  
For Flange Thickness'

LT-20BC-1 For up thru 7/16"

LT-20BC-2 For over 7/16" thru 5/8"

(Actual Flange Thickness must be specified)

LT-40HTB-1 is made up from two - LT-20BC-1 Brackets, with a load bar.

LT-40HTB-2 is made up from two - LT-20BC-2 Brackets, with a load bar.

**THREADED ROD WITH HARDWARE  
B7 ALLOY - ALL THREAD  
5/8" - 11 UNC (250# - 2000# capacity)  
3/4" - 10 UNC (4000# capacity)**

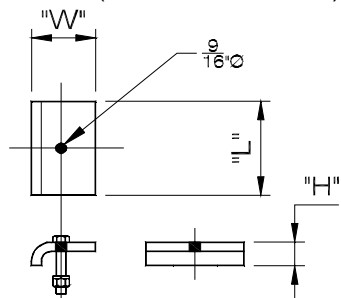
| TRACK CAP. | PRICE | LENGTH | PART NO.       | WEIGHT |
|------------|-------|--------|----------------|--------|
| 250#-2000# |       | 36"    | LT-5/8ROD-36WH | 5#     |
| 250#-2000# |       | 72"    | LT-5/8ROD-72WH | 8#     |
| 4000#      |       | 36"    | LT-3/4ROD-36WH | 7#     |
| 4000#      |       | 72"    | LT-3/4ROD-72WH | 12#    |

Price includes 4 hex nuts & 4 lockwashers

**THREADED ROD WITHOUT HARDWARE  
B7 ALLOY - ALL THREAD  
5/8" - 11 UNC (250# - 2000# capacity)  
3/4" - 10 UNC (4000# capacity)**

| TRACK CAP. | PRICE | LENGTH | PART NO.     | WEIGHT |
|------------|-------|--------|--------------|--------|
| 250#-2000# |       | 36"    | LT-5/8ROD-36 | 3#     |
| 250#-2000# |       | 72"    | LT-5/8ROD-72 | 6#     |
| 4000#      |       | 36"    | LT-3/4ROD-36 | 5#     |
| 4000#      |       | 72"    | LT-3/4ROD-72 | 10#    |

**BEAM CLIP (WITH HARDWARE)**

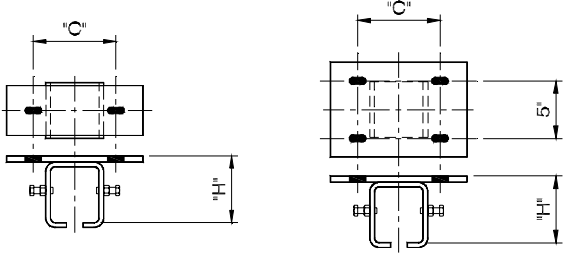


| CAPACITY | 250#-500# | 1000# - -4000# |
|----------|-----------|----------------|
| PART NO. | LT-05BMC  | LT-20BMC       |
| H        | 1 1/8"    | 1 1/4"         |
| L        | 3 1/2"    | 5"             |
| W        | 3"        | 3 1/4"         |
| WEIGHT   | 2#        | 3#             |

Beam clip is painted black and includes 1/2" bolt, nut, and lockwasher.

**CEILING SUPPORT BRACKET**

Used for PARALLEL mounting



250# - 2000#

4000#

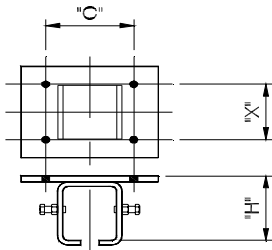
|              |               |          |          |          |
|--------------|---------------|----------|----------|----------|
| CAPACITY     | 250# --- 500# | 1000#    | 2000#    | 4000#    |
| PART NO.     | LT-05SBP      | LT-10SBP | LT-20SBP | LT-40SBP |
| Bolt Dia.    | 1/2"          | 1/2"     | 1/2"     | 1/2"     |
| C            | 5 3/8"        | 6 1/4"   | 6 1/2"   | 6 1/2"   |
| H            | 3 3/16"       | 4"       | 5 3/8"   | 5 3/8"   |
| Flange (Min) | 4"            | 4 7/8"   | 5 1/8"   | 5 1/8"   |
| Flange (Max) | 5 1/2"        | 6 3/8"   | 6 5/8"   | 6 5/8"   |
| WEIGHT       | 6#            | 9#       | 14#      | 15#      |

Bracket is painted yellow.

NOT INCLUDED: Beam clips with hardware

**CEILING SUPPORT BRACKET**

Used for PERPENDICULAR mounting



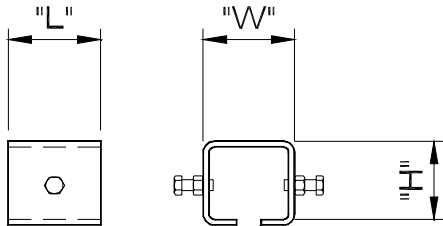
|          |               |          |          |          |
|----------|---------------|----------|----------|----------|
| CAPACITY | 250# --- 500# | 1000#    | 2000#    | 4000#    |
| PART NO. | LT-05SBN      | LT-10SBN | LT-20SBN | LT-20SBN |
| H        | 3 3/16"       | 4"       | 5 3/8"   | 5 3/8"   |
| C        | 5 1/4"        | 6 1/4"   | 6 1/4"   | 6 1/4"   |
| WEIGHT   | 5#            | 11#      | 16#      | 16#      |

Bracket is painted yellow.

"X" is flange width plus 5/8" minimum, or flange width minus 2" maximum.

NOT INCLUDED: beam clips with hardware.

**PLAIN SUPPORT BRACKET**

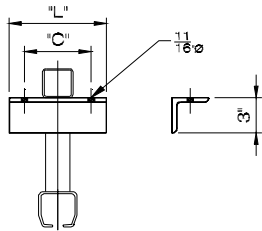


|          |               |          |          |          |
|----------|---------------|----------|----------|----------|
| CAPACITY | 250# --- 500# | 1000#    | 2000#    | 4000#    |
| PART NO. | LT-05PSB      | LT-10PSB | LT-20PSB | LT-20PSB |
| W        | 3 5/16"       | 3 15/16" | 4 9/16"  | 4 9/16"  |
| H        | 2 13/16"      | 3 1/2"   | 4 7/8"   | 4 7/8"   |
| L        | 3 1/2"        | 4"       | 4 1/2"   | 4 1/2"   |
| WEIGHT   | 4#            | 5#       | 8#       | 8#       |

Can be welded, 1/4" fillet weld using E7xx electrodes.

Bracket is painted yellow.

**SPINE CLAMP ANGLE**

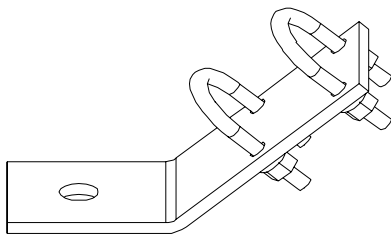


|          |              |
|----------|--------------|
| CAPACITY | 250# - 4000# |
| PART NO. | LT-40SCA     |
| L        | 7 1/2"       |
| C        | 5 1/2"       |
| WEIGHT   | 5#           |

Used to clamp trussed runway to ceiling or hanger.

Angle is painted yellow.

**SWAY BRACE FITTING**

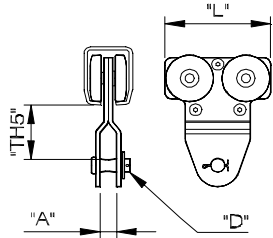


|          |        |
|----------|--------|
| PART NO. | WEIGHT |
| LT-C562B | 1#     |

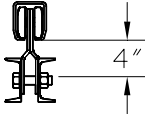
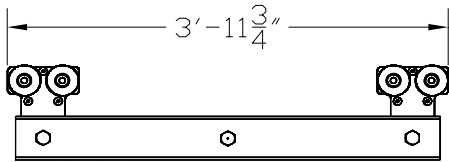
These clamps permit easy sway bracing with 1" diameter standard pipe (pipe by others). Clamps are painted black. Mounting hole in fitting is drilled to accept a 5/8" mounting bolt (bolt by others). U-bolts are furnished. These fittings are NOT INCLUDED with kit cranes.

(See page 15 Of 15 for Sway Brace Kit pricing.)

**HOIST TROLLEY FOR STEEL TRACK  
250# - 2000#**



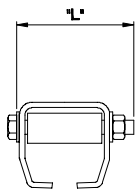
**HOIST TROLLEY FOR STEEL TRACK  
4000#**



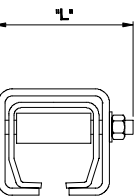
| CAPACITY | 250# --- 500# | 1000#   | 2000#   | 4000#      |
|----------|---------------|---------|---------|------------|
| PART NO. | LT-05TR       | LT-10TR | LT-20TR | LT-40TR    |
| A        | 1 1/8"        | 1 1/4"  | 1 1/4"  | 1 1/4"     |
| L        | 4 11/16"      | 5 1/2"  | 7 3/4"  | 3'-11 3/4" |
| TH5      | 2 5/8"        | 3 3/16" | 4 1/8"  | 4"         |
| D (Dia.) | 11/16"        | 1"      | 1"      | 1"         |
| WEIGHT   | 4#            | 7#      | 18#     | 90#        |

The standard hoist trolley is gold irradiate plated. The hoist trolley for 4000# systems is a load-bar, and is painted black.

**END STOP BUMPER  
(WITH HARDWARE)**



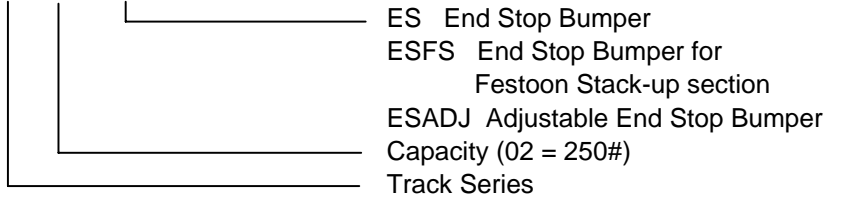
Type ES



Type ESFS

**PART NUMBER EXPLANATION:**

LT - 02 - ES

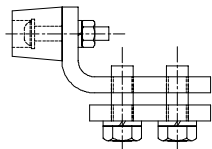
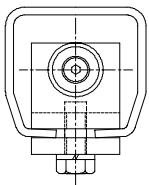


| CAPACITY | 250# --- 500# | 1000#   | 2000#   | 4000#   |
|----------|---------------|---------|---------|---------|
| PART NO. | LT-05ES       | LT-10ES | LT-20ES | LT-20ES |
| W        | 2"            | 2 1/2"  | 2 1/2"  | 2 1/2"  |
| L        | 3 1/2"        | 4"      | 4 1/2"  | 4 1/2"  |
| WEIGHT   | 1#            | 1#      | 1#      | 1#      |

| CAPACITY | 250# --- 500# | 1000#     | 2000#     | 4000#     |
|----------|---------------|-----------|-----------|-----------|
| PART NO. | LT-05ESFS     | LT-10ESFS | LT-20ESFS | LT-20ESFS |
| W        | 2"            | 2 1/2"    | 2 1/2"    | 2 1/2"    |
| L        | 4 1/4"        | 5"        | 5 1/2"    | 5 1/2"    |
| WEIGHT   | 1#            | 1#        | 1#        | 1#        |

Hardware includes: 1/2"-13UNC hex head cap screw, nyloc hex nut, and 2 flat washers. Bumpers for festoon stack-up sections utilize longer bolts.

**ADJUSTABLE END STOP BUMPER  
(For Use On Runways)**



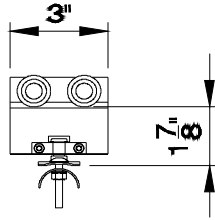
| CAPACITY | 250# --- 500# | 1000# - 4000# |
|----------|---------------|---------------|
| PART NO. | LT-05ESADJ    | LT-20ESADJ    |
| L        | 4 1/4"        | 4 1/4"        |
| WEIGHT   | 2#            | 2#            |

Can be used as a secondary end stop

## FESTOONING ACCESSORIES

(see page 15 of 16 for Adders/Deducts for systems)

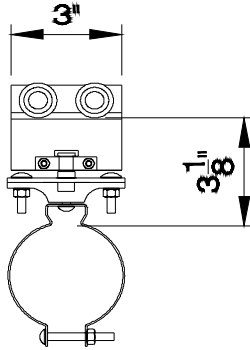
### FESTOON TROLLEY for STEEL TRACK



|          |               |         |             |
|----------|---------------|---------|-------------|
| CAPACITY | 250# --- 500# | 1000#   | 2000#-4000# |
| PART NO. | LT-05FT       | LT-10FT | LT-20FT     |
| WEIGHT   | 1#            | 2#      | 2#          |

For use with flat, round cable or air hose for all lengths of runway.

### VACUUM HOSE FESTOON TROLLEY



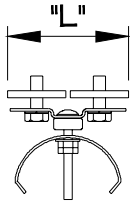
|          |               |           |             |
|----------|---------------|-----------|-------------|
| CAPACITY | 250# --- 500# | 1000#     | 2000#-4000# |
| PART NO. | LT-05VHFT     | LT-10VHFT | LT-20VHFT   |
| WEIGHT   | 2#            | 3#        | 3#          |

Recommended for vacuum hose use. One every 3' on bridge or 6' on runway.

For use with maximum 5" dia. vacuum hose.

Specify hose dia. when ordering.

### FESTOON CLAMP ASSEMBLY



|          |              |
|----------|--------------|
| CAPACITY | 250# - 4000# |
| PART NO. | LT - 20FC    |
| L        | 3 1/8"       |
| WEIGHT   | 2#           |

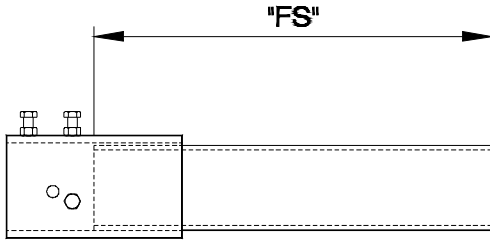
For flat cable and air hose.

Fits all track series.

**FESTOON STACK SECTION  
For STEEL TRACK**

Allows trolleys to be stored without taking away from the available track space. Stack section is painted yellow. Special mounting arrangements need to be made when used on 250# and 500# series (consult factory).

PRICE INCLUDES: attachment hardware and one bolt for an end stop bumper.



|          |               |           |           |           |
|----------|---------------|-----------|-----------|-----------|
| CAPACITY | 250# --- 500# | 1000#     | 2000#     | 4000#     |
| PART NO. | LT-05FS12     | LT-10FS12 | LT-20FS12 | LT-20FS12 |
| L        | 12"           | 12"       | 12"       | 12"       |
| WEIGHT   | 8#            | 16#       | 29#       | 29#       |
| PART NO. | LT-05FS18     | LT-10FS18 | LT-20FS18 | LT-20FS18 |
| L        | 18"           | 18"       | 18"       | 18"       |
| WEIGHT   | 11#           | 21#       | 38#       | 38#       |
| PART NO. | LT-05FS24     | LT-10FS24 | LT-20FS24 | LT-20FS24 |
| L        | 24"           | 24"       | 24"       | 24"       |
| WEIGHT   | 14#           | 29#       | 51#       | 51#       |
| PART NO. | LT-05FS36     | LT-10FS36 | LT-20FS36 | LT-20FS36 |
| L        | 36"           | 36"       | 36"       | 36"       |
| WEIGHT   | 25#           | 39#       | 69#       | 69#       |
| PART NO. | LT-05FS54     | LT-10FS54 | LT-20FS54 | LT-20FS54 |
| L        | 54"           | 54"       | 54"       | 54"       |
| WEIGHT   | 25#           | 39#       | 69#       | 69#       |
| PART NO. | LT-05FS63     | LT-10FS63 | LT-20FS63 | LT-20FS63 |
| L        | 63"           | 63"       | 63"       | 63"       |
| WEIGHT   | 25#           | 39#       | 69#       | 69#       |

**BRIDGE BUFFER**

Used with multiple bridge systems to separate bridges and prevent an overload condition. Buffer kits are painted the same color as the runways and are sold as a pair.

Bridge separation distance is based on the combined loads of the bridges and the support center distance of the runways. Please consult the factory for the exact dimensions for each application.

**BRIDGE BUFFER ASSEMBLY**

|          |               |         |         |         |
|----------|---------------|---------|---------|---------|
| CAPACITY | 250# --- 500# | 1000#   | 2000#   | 4000#   |
| PART NO. | LT-05BB       | LT-10BB | LT-20BB | LT-20BB |
| WEIGHT   | 70#           | 80#     | 90#     | 90#     |

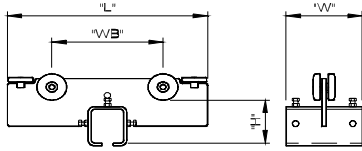


## END TRUCKS

The standard End Truck is used on bridges of 23' or less. Extended End Trucks are for bridges of more than 23'. Each bridge should have two end trucks, one clamping and one non-clamping.

### STANDARD END TRUCK

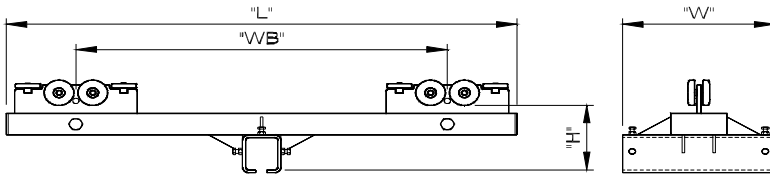
For STEEL bridge lengths  $\leq 23'$



| CAPACITY | 250# --- 500# | 1000#   | 2000#   |
|----------|---------------|---------|---------|
| PART NO. | LT-05ET       | LT-10ET | LT-20ET |
| H        | 3 1/2"        | 4 3/16" | 5 3/4"  |
| L        | 17 3/4"       | 19 3/4" | 23 5/8" |
| WB       | 10 7/8"       | 11 1/4" | 13 1/8" |
| W        | 7"            | 8"      | 9"      |
| WEIGHT   | 15#           | 26#     | 46#     |

### EXTENDED END TRUCK

for STEEL Bridge lengths  $> 23'$  and all 4000# bridges.



| CAPACITY | 250# --- 500# | 1000#     | 2000#     | 4000#     |
|----------|---------------|-----------|-----------|-----------|
| PART NO. | LT-05ETLS     | LT-10ETLS | LT-20ETLS | LT-20ETLS |
| H        | 5 3/4"        | 6 3/4"    | 9"        | 9"        |
| L        | 41"           | 43 3/8"   | 60 1/2"   | 60 1/2"   |
| WB       | 30"           | 30"       | 44"       | 44"       |
| W        | 14"           | 16"       | 18"       | 18"       |
| WEIGHT   | 53#           | 72#       | 156#      | 156#      |

### TranStation Options Available: (Consult Factory For Pricing)

Motorized Bridge and Trolley Travel (Tractor), Travel Speed 35, 50 Or 75 FPM

Drive Control: Single Speed  
 Single Speed with Soft Start  
 Variable Frequency Drive

Curves  
 Switches  
 Transfers  
 Hand Chain Operated Track Clamps  
 Conductor Bar Electrification  
 Cantilevers  
 Telescoping Track  
 Low Headroom Configurations

## TIPS FOR FESTOONING WITH MULTIPLE BRIDGES

### TWO BRIDGES:

The most common method of bringing power to the two bridges is by bringing festooning in from both ends of the runway. Use the Festoon Adder/Deduct Chart (Page 14 of 15) to add additional festooning to a system.

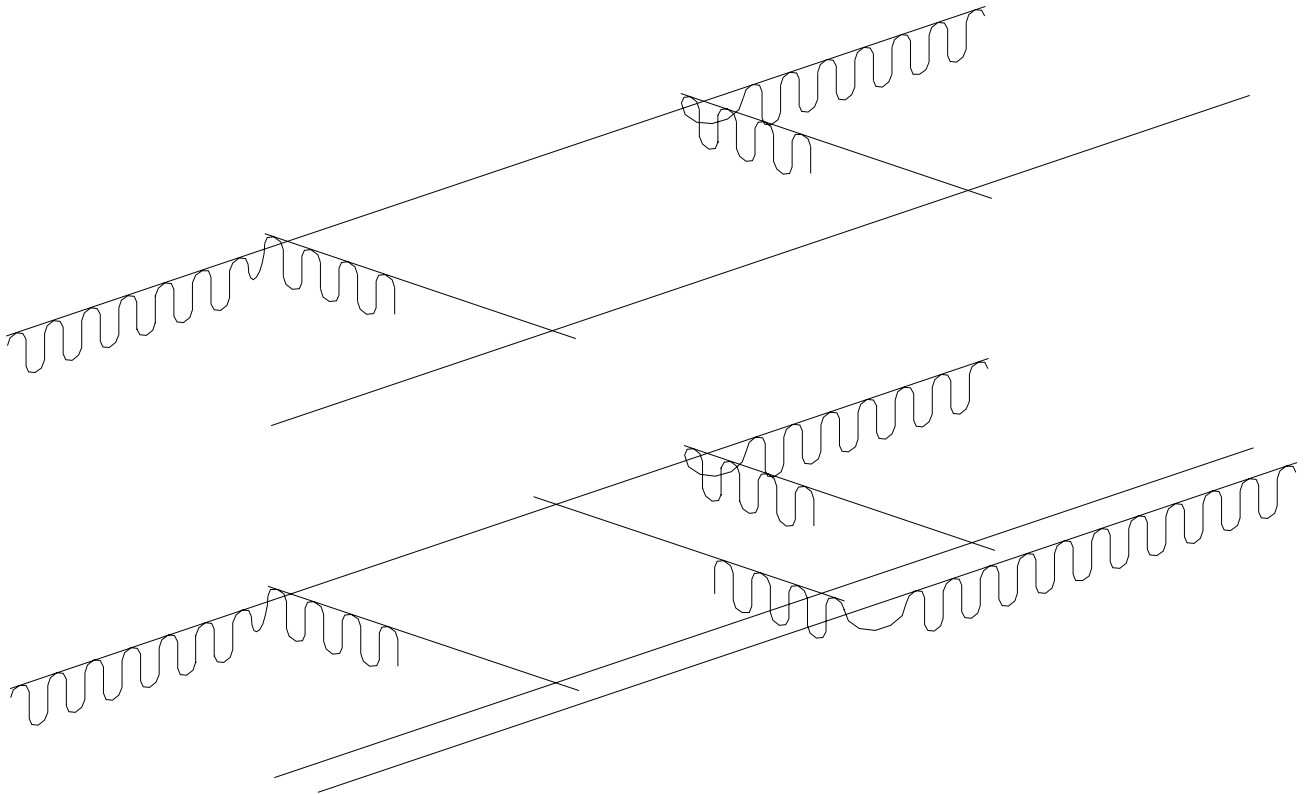
### THREE OR MORE SYSTEMS:

#### Option 1:

Conductor bar (contact factory for pricing) can be used with collector shoes bring power to the bridges. As a rule the conductor bar is the most practical and economical choice on systems with three (3) or more bridges and/or runway exceeding 100 feet.

#### Option 2:

A festoon support (a separate 250# series track or messenger wire system) can be attached off to one side of the runway or runways.



# ADDERS/DEDUCTS FOR FESTOONING

Standard work area bridge crane systems include bridge and runway festooning:

- 1) Festoon Trolleys
- 2) 4 - Conductor flat cable OR 1/2" air hose, (total length = runway length + bridge length + 10')
- 3) 2 festoon clamps
- 4) 1 festoon stack-up section

Recommendations and Guidelines for Festooning:

- 1) CRANEVEYOR uses Festoon Trolleys for all applications and all runway lengths.
- 2) Vacuum Hose Trolleys are available for up to 5" diameter vacuum hose.

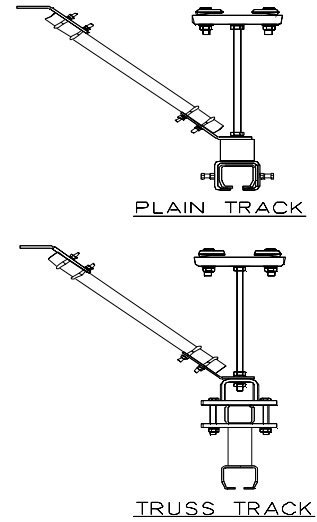
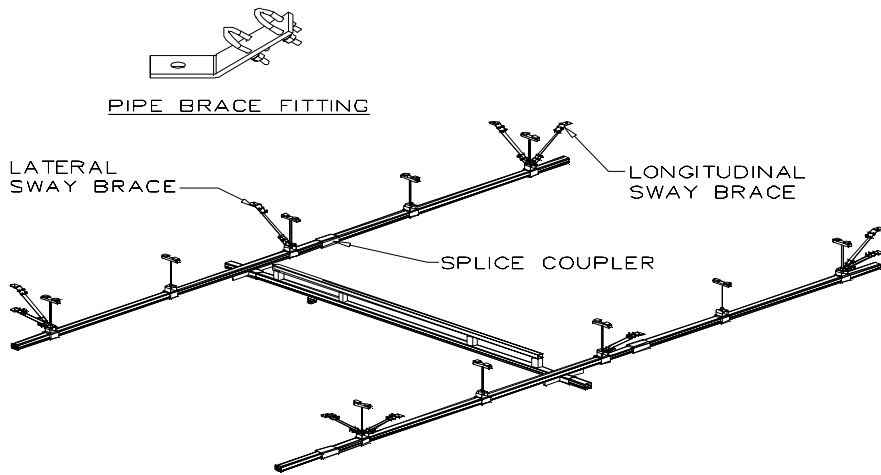
| RUNWAY LENGTH | 8' Bridge Length         |                              |                      | 10' Bridge Length        |                              |                      | 15' Bridge Length        |                              |                      | 20' Bridge Length        |                              |                      |
|---------------|--------------------------|------------------------------|----------------------|--------------------------|------------------------------|----------------------|--------------------------|------------------------------|----------------------|--------------------------|------------------------------|----------------------|
|               | Festoon Trolleys (Adder) | Vacuum Hose Trolleys (Adder) | No Festooning Deduct | Festoon Trolleys (Adder) | Vacuum Hose Trolleys (Adder) | No Festooning Deduct | Festoon Trolleys (Adder) | Vacuum Hose Trolleys (Adder) | No Festooning Deduct | Festoon Trolleys (Adder) | Vacuum Hose Trolleys (Adder) | No Festooning Deduct |
| 11' - 6       | Standard                 |                              |                      | Standard                 |                              |                      | Standard                 |                              |                      | Standard                 |                              |                      |
| 23'           | Standard                 |                              |                      | Standard                 |                              |                      | Standard                 |                              |                      | Standard                 |                              |                      |
| 33'           | Standard                 |                              |                      | Standard                 |                              |                      | Standard                 |                              |                      | Standard                 |                              |                      |
| 43'           | Standard                 |                              |                      | Standard                 |                              |                      | Standard                 |                              |                      | Standard                 |                              |                      |
| 53'           | Standard                 |                              |                      | Standard                 |                              |                      | Standard                 |                              |                      | Standard                 |                              |                      |
| 63'           | Standard                 |                              |                      | Standard                 |                              |                      | Standard                 |                              |                      | Standard                 |                              |                      |
| 83'           | Standard                 |                              |                      | Standard                 |                              |                      | Standard                 |                              |                      | Standard                 |                              |                      |
| 103'          | Standard                 |                              |                      | Standard                 |                              |                      | Standard                 |                              |                      | Standard                 |                              |                      |

| RUNWAY LENGTH | 23' Bridge Length        |                              |                      | 28' Bridge Length        |                              |                      | 34' Bridge Length        |                              |                      |
|---------------|--------------------------|------------------------------|----------------------|--------------------------|------------------------------|----------------------|--------------------------|------------------------------|----------------------|
|               | Festoon Trolleys (Adder) | Vacuum Hose Trolleys (Adder) | No Festooning Deduct | Festoon Trolleys (Adder) | Vacuum Hose Trolleys (Adder) | No Festooning Deduct | Festoon Trolleys (Adder) | Vacuum Hose Trolleys (Adder) | No Festooning Deduct |
| 11' - 6       | Standard                 |                              |                      | Standard                 |                              |                      | Standard                 |                              |                      |
| 23'           | Standard                 |                              |                      | Standard                 |                              |                      | Standard                 |                              |                      |
| 33'           | Standard                 |                              |                      | Standard                 |                              |                      | Standard                 |                              |                      |
| 43'           | Standard                 |                              |                      | Standard                 |                              |                      | Standard                 |                              |                      |
| 53'           | Standard                 |                              |                      | Standard                 |                              |                      | Standard                 |                              |                      |
| 63'           | Standard                 |                              |                      | Standard                 |                              |                      | Standard                 |                              |                      |
| 83'           | Standard                 |                              |                      | Standard                 |                              |                      | Standard                 |                              |                      |
| 103'          | Standard                 |                              |                      | Standard                 |                              |                      | Standard                 |                              |                      |

Note: 'No festooning' deduct is also to be used as the adder for additional festooning on mixed capacity systems.

**SWAY BRACE KITS**

(NOT INCLUDED IN BASE PRICE)



Reasons for Sway Bracing

CraneVeyor Ceiling Mounted Bridge Cranes require bracing to protect against damaging lateral movements. Sway bracing will reduce lateral stresses on hangers and hanger rods and keep runways rigid for optimum performance. The added rigidity provided by sway bracing will also help prevent hardware from loosening.

Guidelines for Applying Sway Bracing

The amount of sway bracing is typically determined by a combination of the length of the system and the distance of the drop from the ceiling. CraneVeyor recommends sway bracing any system that uses a threaded rod drop. If a threaded rod drop is used, all four corners of the system should be braced both laterally and longitudinally, and the system should be braced on both sides at all intermediate hanger points on trussed track, and on plain track at approx. every other intermediate hanger point, with a max. of 12 foot spacing

NOTE: Actual sway brace requirements will vary from system to system. For drops longer than 6 feet. CraneVeyor recommends that structural tubing or angle be used for increased rigidity (sway bracing is still required).

Sway brace fitting kits are priced below based on the above recommendations. Each kit includes top and bottom fittings for each sway brace point and comes with a black finish..

Quantities listed below are the number of Kits required.

**1" pipe (by others) is not included.**

| Runway Length | Track Style             |      |          |                          |      |  |
|---------------|-------------------------|------|----------|--------------------------|------|--|
|               | Plain Track             |      |          | Trussed Track            |      |  |
|               | 6' Max. Support Centers |      |          | 20' Max. Support Centers |      |  |
| Quantity *    | Weight                  |      | Quantity | Weight                   |      |  |
| 11'-6"        | 8                       | 16 # |          | 8                        | 16 # |  |
| 23'           | 10                      | 16 # |          | 8                        | 16 # |  |
| 33'           | 12                      | 18 # |          | 10                       | 18 # |  |
| 43'           | 14                      | 18 # |          | 10                       | 18 # |  |
| 53'           | 16                      | 20 # |          | 12                       | 20 # |  |
| 63'           | 18                      | 20 # |          | 12                       | 20 # |  |
| 83'           | 20                      | 22 # |          | 14                       | 22 # |  |
| 103'          | 24                      | 24 # |          | 16                       | 24 # |  |

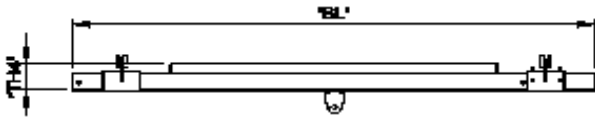
| Runway Length | Track Style              |      |          |                          |      |  |
|---------------|--------------------------|------|----------|--------------------------|------|--|
|               | Trussed Track            |      |          | Trussed Track            |      |  |
|               | 25' Max. Support Centers |      |          | 30' Max. Support Centers |      |  |
| Quantity      | Weight                   |      | Quantity | Weight                   |      |  |
| 28'           | 8                        | 16 # |          | ----                     | ---- |  |
| 33'           | ----                     | ---- |          | 8                        | 16 # |  |
| 53'           | 10                       | 18 # |          | ----                     | ---- |  |
| 63'           | ----                     | ---- |          | 10                       | 18 # |  |
| 78'           | 12                       | 20 # |          | ----                     | ---- |  |
| 93'           | ----                     | ---- |          | 12                       | 20 # |  |
| 103'          | 14                       | 22 # |          | ----                     | ---- |  |
| 123'          | ----                     | ---- |          | 14                       | 22 # |  |

\* Based on 20' track lengths (except 11' - 6 runway length)

# TranStation Track Sections

## Bridge Types

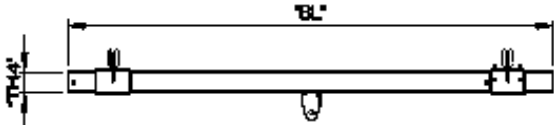
## Runway Types



Plain Track Bridge

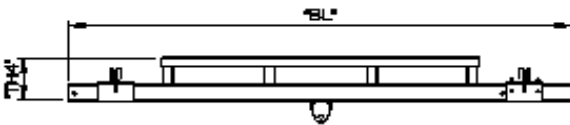


Plain Track Runway



Reinforced Track Bridge

(Reinforced Track Not Used On Runways)

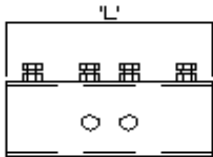


Truss Track Bridge

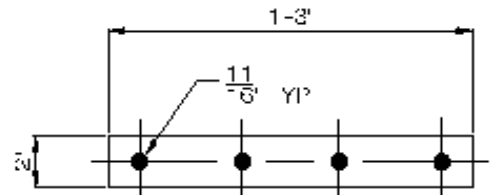
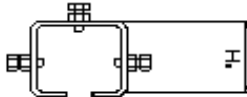


Truss Track Runway

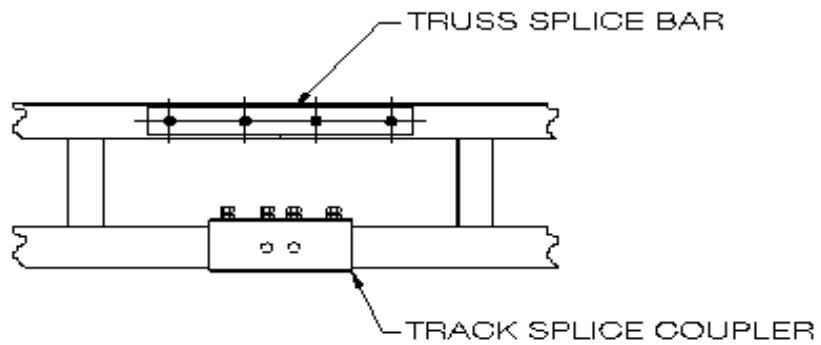
## Track Couplers



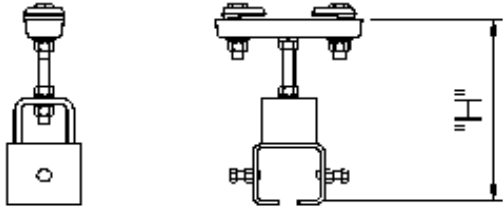
Track Coupler



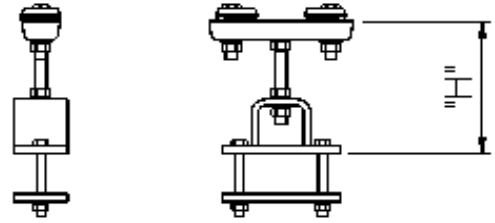
Truss Splice Bar



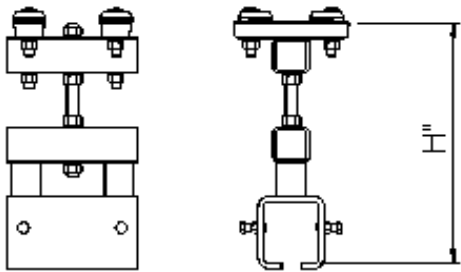
## Track Hangers



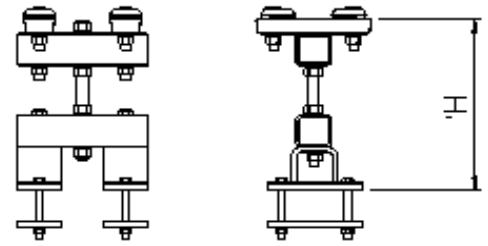
STANDARD HANGER ASSEMBLY  
PLAIN STEEL TRACK 250# - 2000#



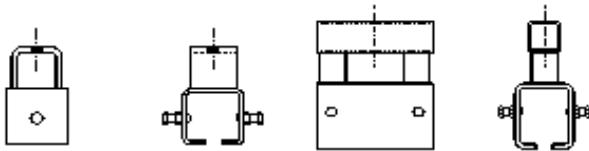
STANDARD HANGER ASSEMBLY  
TRUSSED STEEL TRACK 250# - 2000#



STANDARD HANGER ASSEMBLY  
PLAIN STEEL TRACK 4000#



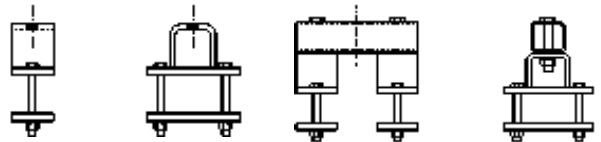
STANDARD HANGER ASSEMBLY  
TRUSSED STEEL TRACK 4000#



250 - 2000#

4000#

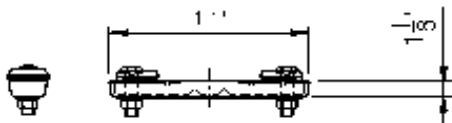
LOWER HANGER BRACKET  
PLAIN STEEL TRACK



250 - 2000#

4000#

LOWER HANGER BRACKET  
TRUSSED STEEL TRACK



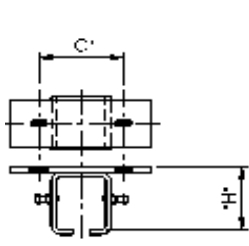
250 - 2000#



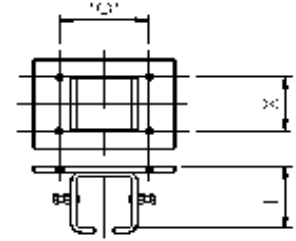
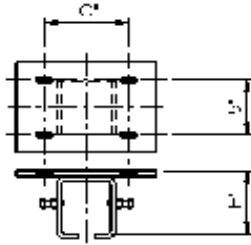
4000#

UPPER HANGER BRACKETS

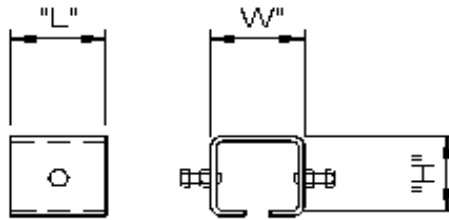
## Track Hangers for Plain Track



CEILING SUPPORT BRACKET  
Used for PARALLEL mounting



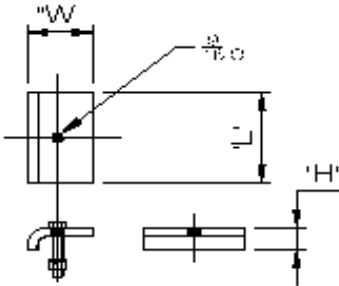
CEILING SUPPORT BRACKET  
Used for PERPENDICULAR mounting



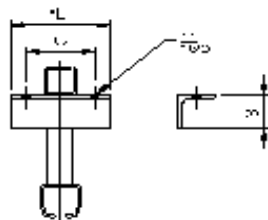
PLAIN SUPPORT BRACKET

---

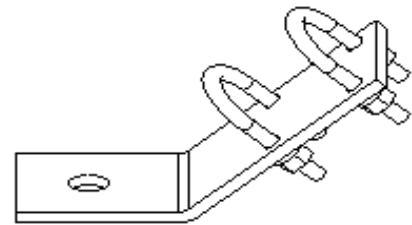
## Hanger Accessories



BEAM CLIP

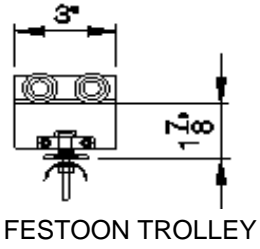


SPINE CLAMP ANGLE



SWAY BRACE FITTING

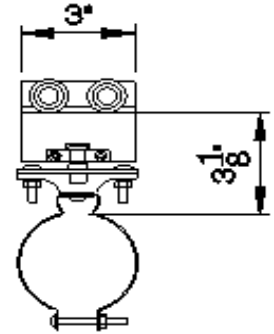
Festooning Accessories



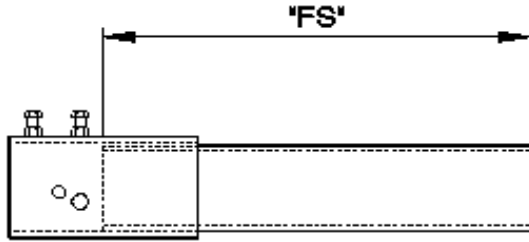
FESTOON TROLLEY



FESTOON CLAMP ASSEMBLY

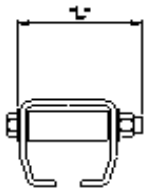


VACUUM HOSE FESTOON TROLLEY

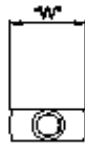


FESTOON STACK SECTION

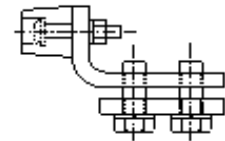
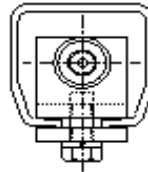
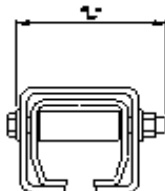
Bumpers



Type ES



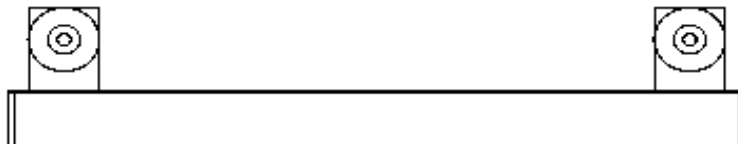
Type ESFS



END STOP BUMPER

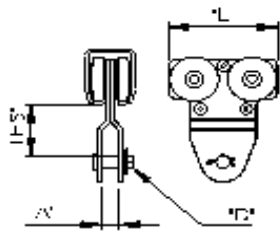
ADJUSTABLE END STOP BUMPER

Bridge Buffer

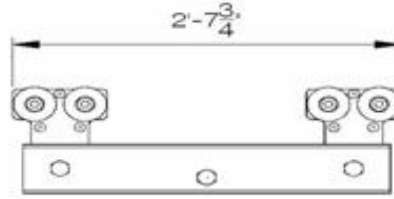


BRIDGE BUFFER ASSEMBLY

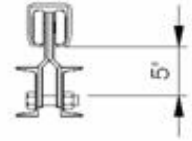
## Hoist Trolleys



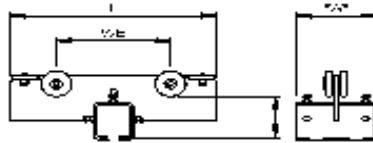
HOIST TROLLEY  
250# - 2000#



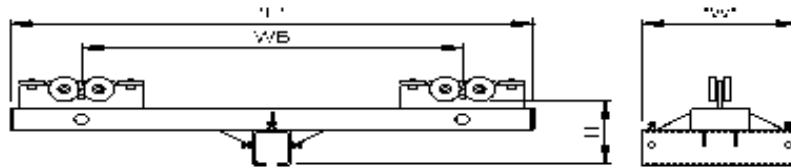
HOIST TROLLEY  
4000#



## End Trucks



STANDARD END TRUCK



EXTENDED END TRUCK