

RUNWAY LENGTH	FS	(Max) SD	CD	HB	OAH	NO. SUPPORT ASS'YS	TW	BD	CAP S HB BL RL SD	WEIGHT
11'-6	12"	20'-0	10'-4	10'	12'- 4	2	6"	8"	2000 - S - 10 - 10 - 11 - 20	1524 #
		20'-0		12'	14'- 4	2			2000 - S - 12 - 10 - 11 - 20	1590 #
		20'-0		14'	16'- 6 1/2	2			2000 - S - 14 - 10 - 11 - 20	2163 #
23'-0	12"	20'-0	10'-4	10'	12'- 4	2	6"	8"	2000 - S - 10 - 10 - 23 - 20	1934 #
		20'-0		12'	14'- 4	2			2000 - S - 12 - 10 - 23 - 20	2000 #
		20'-0		14'	16'- 6 1/2	2			2000 - S - 14 - 10 - 23 - 20	2573 #
28'-0	18"	25'-0	10'-4	10'	12'- 4	2	6"	8"	2000 - S - 10 - 10 - 28 - 25	2144 #
		25'-0		12'	14'- 4	2			2000 - S - 12 - 10 - 28 - 25	2210 #
		25'-0		14'	16'- 6 1/2	2			2000 - S - 14 - 10 - 28 - 25	2783 #
33'-0	18"	20'-0	10'-4	10'	12'- 4	3	6"	8"	2000 - S - 10 - 10 - 33 - 20	2679 #
		20'-0		12'	14'- 4	3			2000 - S - 12 - 10 - 33 - 20	2777 #
		20'-0		14'	16'- 6 1/2	3			2000 - S - 14 - 10 - 33 - 20	3637 #
33'-0	18"	30'-0	10'-4	10'	12'- 4	2	6"	8"	2000 - S - 10 - 10 - 33 - 30	2404 #
		30'-0		12'	14'- 4	2			2000 - S - 12 - 10 - 33 - 30	2470 #
		30'-0		14'	16'- 6 1/2	2			2000 - S - 14 - 10 - 33 - 30	3043 #
43'-0	24"	20'-0	10'-4	10'	12'- 4	3	6"	8"	2000 - S - 10 - 10 - 43 - 20	3035 #
		20'-0		12'	14'- 4	3			2000 - S - 12 - 10 - 43 - 20	3134 #
		20'-0		14'	16'- 6 1/2	3			2000 - S - 14 - 10 - 43 - 20	3994 #
53'-0	36"	20'-0	10'-4	10'	12'- 4	4	6"	8"	2000 - S - 10 - 10 - 53 - 20	3780 #
		25'-0		10'	12'- 4	3			2000 - S - 10 - 10 - 53 - 25	3452 #
		20'-0		12'	14'- 4	4			2000 - S - 12 - 10 - 53 - 20	3911 #
		25'-0		12'	14'- 4	3			2000 - S - 12 - 10 - 53 - 25	3550 #
		20'-0		14'	16'- 6 1/2	4			2000 - S - 14 - 10 - 53 - 20	5058 #
63'-0	36"	20'-0	10'-4	10'	12'- 4	4	6"	8"	2000 - S - 10 - 10 - 63 - 20	4137 #
		20'-0		12'	14'- 4	4			2000 - S - 12 - 10 - 63 - 20	4268 #
		20'-0		14'	16'- 6 1/2	4			2000 - S - 14 - 10 - 63 - 20	5414 #
		30'-0		10'	12'- 4	3			2000 - S - 10 - 10 - 63 - 30	3931 #
		30'-0		12'	14'- 4	3			2000 - S - 12 - 10 - 63 - 30	4029 #
78'-0	54"	25'-0	10'-4	10'	12'- 4	4	6"	8"	2000 - S - 10 - 10 - 78 - 25	4760 #
		25'-0		12'	14'- 4	4			2000 - S - 12 - 10 - 78 - 25	4891 #
		25'-0		14'	16'- 6 1/2	4			2000 - S - 14 - 10 - 78 - 25	6037 #
83'-0	54"	20'-0	10'-4	10'	12'- 4	5	6"	8"	2000 - S - 10 - 10 - 83 - 20	5238 #
		20'-0		12'	14'- 4	5			2000 - S - 12 - 10 - 83 - 20	5402 #
		20'-0		14'	16'- 6 1/2	5			2000 - S - 14 - 10 - 83 - 20	6835 #
93'-0	54"	30'-0	10'-4	10'	12'- 4	4	6"	8"	2000 - S - 10 - 10 - 93 - 30	5457 #
		30'-0		12'	14'- 4	4			2000 - S - 12 - 10 - 93 - 30	5588 #
		30'-0		14'	16'- 6 1/2	4			2000 - S - 14 - 10 - 93 - 30	6734 #
103'-0	54"	20'-0	10'-4	10'	12'- 4	6	6"	8"	2000 - S - 10 - 10 - 103 - 20	6339 #
		25'-0		10'	12'- 4	5			2000 - S - 10 - 10 - 103 - 25	6068 #
		20'-0		12'	14'- 4	6			2000 - S - 12 - 10 - 103 - 20	6536 #
		25'-0		12'	14'- 4	5			2000 - S - 12 - 10 - 103 - 25	6232 #
		20'-0		14'	16'- 6 1/2	6			2000 - S - 14 - 10 - 103 - 20	8255 #
123'-0	63"	30'-0	10'-4	10'	12'- 4	5	6"	8"	2000 - S - 10 - 10 - 123 - 30	6983 #
		30'-0		12'	14'- 4	5			2000 - S - 12 - 10 - 123 - 30	7147 #
		30'-0		14'	16'- 6 1/2	5			2000 - S - 14 - 10 - 123 - 30	8580 #
		30'-0		10'	12'- 4	5			2000 - S - 10 - 10 - 123 - 30	6983 #
		30'-0		12'	14'- 4	5			2000 - S - 12 - 10 - 123 - 30	7147 #

Price of Crane System includes:

- > Bridge
- > End Trucks
- > Hoist-Trolley
- > Floor Anchor Bolts

Weights & Dimensions are approximate and may change without notice

- > Runways
- > Support Frames
- > Hanger Assemblies
- > Splice Assemblies
- > Festoon Cable Trolleys
- > 4-Cond #14 Flat Cable
- > Festoon Clamps
- > Festoon Stack-up Section

Note: Adequacy of floor to support loads imposed by crane system to be determined by others, 6" nominal floor thickness.

BRACING TO BUILDING IS NOT REQUIRED. ALL SYSTEMS SUITABLE FOR SEISMIC ZONE 4.

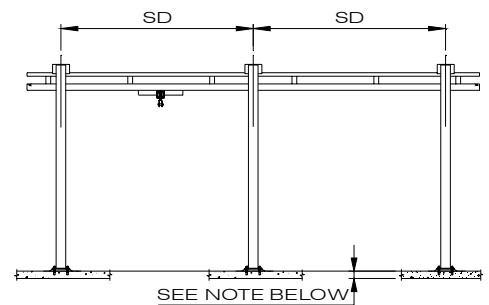
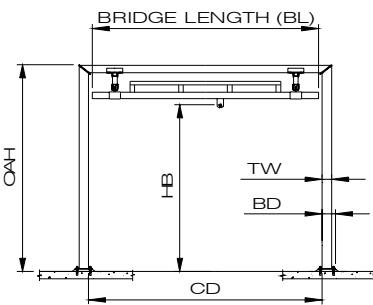
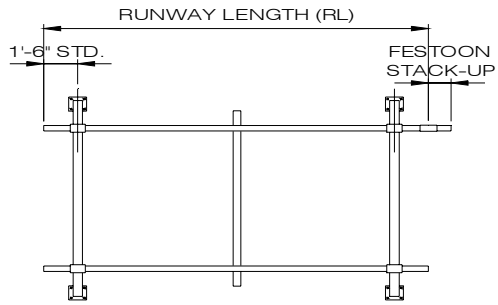
'(01-01-07)

19 of 29

**CRANEVEYOR CORP**

**2000# CAPACITY**

**BRIDGE LENGTH (BL) 15' - 0"**



RUNWAY LENGTH	FS	(Max) SD	CD	HB	OAH	NO. SUPPORT ASS'YS	TW	BD	MODEL NUMBER					WEIGHT
									CAP	S	HB	BL	RL	
23'-0	12"	20'-0	15'-4	10'	12'- 4	2	6"	8"	2000 - S - 10 - 15 - 23 - 20					2087 #
		20'-0		12'	14'- 4	2			2000 - S - 12 - 15 - 23 - 20					2153 #
		20'-0		14'	16'- 6 1/2	2			2000 - S - 14 - 15 - 23 - 20					2784 #
28'-0	18"	25'-0	15'-4	10'	12'- 4	2	6"	8"	2000 - S - 10 - 15 - 28 - 25					2297 #
		25'-0		12'	14'- 4	2			2000 - S - 12 - 15 - 28 - 25					2363 #
		25'-0		14'	16'- 6 1/2	2			2000 - S - 14 - 15 - 28 - 25					2994 #
33'-0	18"	20'-0	15'-4	10'	12'- 4	3	6"	8"	2000 - S - 10 - 15 - 33 - 20					2873 #
		20'-0		12'	14'- 4	3			2000 - S - 12 - 15 - 33 - 20					2971 #
		20'-0		14'	16'- 6 1/2	3			2000 - S - 14 - 15 - 33 - 20					3918 #
33'-0	18"	30'-0	15'-4	10'	12'- 4	2	6"	8"	2000 - S - 10 - 15 - 33 - 30					2557 #
		30'-0		12'	14'- 4	2			2000 - S - 12 - 15 - 33 - 30					2623 #
		30'-0		14'	16'- 6 1/2	2			2000 - S - 14 - 15 - 33 - 30					3254 #
43'-0	24"	20'-0	15'-4	10'	12'- 4	3	6"	8"	2000 - S - 10 - 15 - 43 - 20					3229 #
		20'-0		12'	14'- 4	3			2000 - S - 12 - 15 - 43 - 20					3328 #
		20'-0		14'	16'- 6 1/2	3			2000 - S - 14 - 15 - 43 - 20					4275 #
53'-0	36"	20'-0	15'-4	10'	12'- 4	4	6"	8"	2000 - S - 10 - 15 - 53 - 20					4015 #
		25'-0		10'	12'- 4	3			2000 - S - 10 - 15 - 53 - 25					3646 #
		20'-0		12'	14'- 4	4			2000 - S - 12 - 15 - 53 - 20					4146 #
		25'-0		12'	14'- 4	3			2000 - S - 12 - 15 - 53 - 25					3744 #
		20'-0		14'	16'- 6 1/2	4			2000 - S - 14 - 15 - 53 - 20					5409 #
		25'-0		14'	16'- 6 1/2	3			2000 - S - 14 - 15 - 53 - 25					4691 #
63'-0	36"	20'-0	15'-4	10'	12'- 4	4	6"	8"	2000 - S - 10 - 15 - 63 - 20					4372 #
		20'-0		12'	14'- 4	4			2000 - S - 12 - 15 - 63 - 20					4503 #
		20'-0		14'	16'- 6 1/2	4			2000 - S - 14 - 15 - 63 - 20					5765 #
63'-0	36"	30'-0	15'-4	10'	12'- 4	3	6"	8"	2000 - S - 10 - 15 - 63 - 30					4125 #
		30'-0		12'	14'- 4	3			2000 - S - 12 - 15 - 63 - 30					4223 #
		30'-0		14'	16'- 6 1/2	3			2000 - S - 14 - 15 - 63 - 30					5170 #
78'-0	54"	25'-0	15'-4	10'	12'- 4	4	6"	8"	2000 - S - 10 - 15 - 78 - 25					4995 #
		25'-0		12'	14'- 4	4			2000 - S - 12 - 15 - 78 - 25					5126 #
		25'-0		14'	16'- 6 1/2	4			2000 - S - 14 - 15 - 78 - 25					6388 #
83'-0	54"	20'-0	15'-4	10'	12'- 4	5	6"	8"	2000 - S - 10 - 15 - 83 - 20					5514 #
		20'-0		12'	14'- 4	5			2000 - S - 12 - 15 - 83 - 20					5678 #
		20'-0		14'	16'- 6 1/2	5			2000 - S - 14 - 15 - 83 - 20					7256 #
93'-0	54"	30'-0	15'-4	10'	12'- 4	4	6"	8"	2000 - S - 10 - 15 - 93 - 30					5692 #
		30'-0		12'	14'- 4	4			2000 - S - 12 - 15 - 93 - 30					5823 #
		30'-0		14'	16'- 6 1/2	4			2000 - S - 14 - 15 - 93 - 30					7085 #
103'-0	54"	20'-0	15'-4	10'	12'- 4	6	6"	8"	2000 - S - 10 - 15 - 103 - 20					6656 #
		25'-0		10'	12'- 4	5			2000 - S - 10 - 15 - 103 - 25					6344 #
		20'-0		12'	14'- 4	6			2000 - S - 12 - 15 - 103 - 20					6853 #
		25'-0		12'	14'- 4	5			2000 - S - 12 - 15 - 103 - 25					6508 #
		20'-0		14'	16'- 6 1/2	6			2000 - S - 14 - 15 - 103 - 20					8746 #
		25'-0		14'	16'- 6 1/2	5			2000 - S - 14 - 15 - 103 - 25					8085 #
123'-0	63"	30'-0	15'-4	10'	12'- 4	5	6"	8"	2000 - S - 10 - 15 - 123 - 30					7259 #
		30'-0		12'	14'- 4	5			2000 - S - 12 - 15 - 123 - 30					7423 #
		30'-0		14'	16'- 6 1/2	5			2000 - S - 14 - 15 - 123 - 30					9001 #

Price of Crane System includes:

Weights & Dimensions are approximate and may change without notice

- > Bridge
- > End Trucks
- > Hoist-Trolley
- > Floor Anchor Bolts
- > Runways
- > Support Frames
- > Hanger Assemblies
- > Splice Assemblies
- > Festoon Cable Trolleys
- > 4-Cond #14 Flat Cable
- > Festoon Clamps
- > Festoon Stack-up Section

Note: Adequacy of floor to support loads imposed by crane system to be determined by others, 6" nominal floor thickness.

BRACING TO BUILDING IS NOT REQUIRED. ALL SYSTEMS SUITABLE FOR SEISMIC ZONE 4.

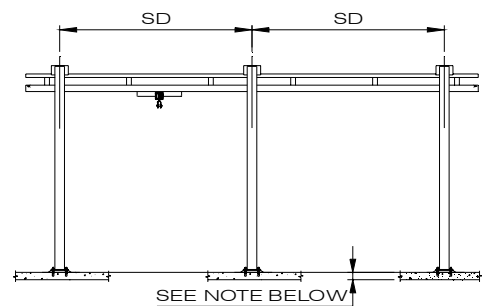
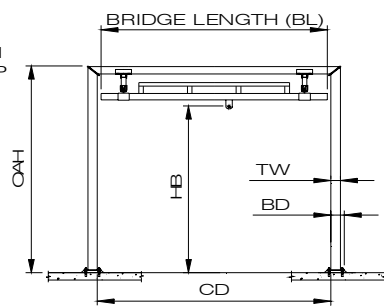
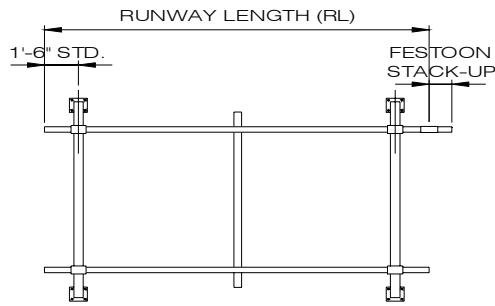
('01-01-07)

20 of 29

**CRANEVEYOR CORP**

**2000# CAPACITY**

**BRIDGE LENGTH (BL) 20' - 0"**



RUNWAY LENGTH	FS	(Max) SD	CD	HB	OAH	NO. SUPPORT ASS'YS	TW	BD	MODEL NUMBER			WEIGHT
									CAP	S	HB	
23'-0	12"	20'-0	20'-4	10'	12'- 4	2			2000 - S - 10 - 20 - 23 - 20			2277 #
		20'-0		12'	14'- 4	2	6"	8"	2000 - S - 12 - 20 - 23 - 20			2343 #
		20'-0		14'	16'- 6 1/2	2	8"	9"	2000 - S - 14 - 20 - 23 - 20			3032 #
28'-0	18"	25'-0	20'-4	10'	12'- 4	2			2000 - S - 10 - 20 - 28 - 25			2487 #
		25'-0		12'	14'- 4	2	6"	8"	2000 - S - 12 - 20 - 28 - 25			2553 #
		25'-0		14'	16'- 6 1/2	2	8"	9"	2000 - S - 14 - 20 - 28 - 25			3242 #
33'-0	18"	20'-0	20'-4	10'	12'- 4	3			2000 - S - 10 - 20 - 33 - 20			3104 #
		20'-0		12'	14'- 4	3	6"	8"	2000 - S - 12 - 20 - 33 - 20			3202 #
		20'-0		14'	16'- 6 1/2	3	8"	9"	2000 - S - 14 - 20 - 33 - 20			4236 #
33'-0	18"	30'-0	20'-4	10'	12'- 4	2			2000 - S - 10 - 20 - 33 - 30			2747 #
		30'-0		12'	14'- 4	2	6"	8"	2000 - S - 12 - 20 - 33 - 30			2813 #
		30'-0		14'	16'- 6 1/2	2	8"	9"	2000 - S - 14 - 20 - 33 - 30			3502 #
43'-0	24"	20'-0	20'-4	10'	12'- 4	3			2000 - S - 10 - 20 - 43 - 20			3460 #
		20'-0		12'	14'- 4	3	6"	8"	2000 - S - 12 - 20 - 43 - 20			3559 #
		20'-0		14'	16'- 6 1/2	3	8"	9"	2000 - S - 14 - 20 - 43 - 20			4593 #
53'-0	36"	20'-0	20'-4	10'	12'- 4	4			2000 - S - 10 - 20 - 53 - 20			4287 #
		25'-0		10'	12'- 4	3			2000 - S - 10 - 20 - 53 - 25			3877 #
		20'-0		12'	14'- 4	4	6"	8"	2000 - S - 12 - 20 - 53 - 20			4418 #
		25'-0		12'	14'- 4	3			2000 - S - 12 - 20 - 53 - 25			3975 #
		20'-0		14'	16'- 6 1/2	4	8"	9"	2000 - S - 14 - 20 - 53 - 20			5797 #
63'-0	36"	20'-0	20'-4	10'	12'- 4	4			2000 - S - 10 - 20 - 63 - 20			4644 #
		20'-0		12'	14'- 4	4	6"	8"	2000 - S - 12 - 20 - 63 - 20			4775 #
		20'-0		14'	16'- 6 1/2	4	8"	9"	2000 - S - 14 - 20 - 63 - 20			6153 #
		30'-0		10'	12'- 4	3			2000 - S - 10 - 20 - 63 - 30			4356 #
		30'-0		12'	14'- 4	3	6"	8"	2000 - S - 12 - 20 - 63 - 30			4454 #
63'-0	36"	30'-0	20'-4	14'	16'- 6 1/2	3	8"	9"	2000 - S - 14 - 20 - 63 - 30			5488 #
		25'-0		10'	12'- 4	4			2000 - S - 10 - 20 - 78 - 25			5267 #
		25'-0		12'	14'- 4	4	6"	8"	2000 - S - 12 - 20 - 78 - 25			5398 #
78'-0	54"	25'-0	20'-4	14'	16'- 6 1/2	4	8"	9"	2000 - S - 14 - 20 - 78 - 25			6776 #
		20'-0		10'	12'- 4	5			2000 - S - 10 - 20 - 83 - 20			5827 #
		20'-0		12'	14'- 4	5	6"	8"	2000 - S - 12 - 20 - 83 - 20			5991 #
83'-0	54"	20'-0	20'-4	14'	16'- 6 1/2	5	8"	9"	2000 - S - 14 - 20 - 83 - 20			7714 #
		30'-0		10'	12'- 4	4			2000 - S - 10 - 20 - 93 - 30			5964 #
		30'-0		12'	14'- 4	4	6"	8"	2000 - S - 12 - 20 - 93 - 30			6095 #
93'-0	54"	30'-0	20'-4	14'	16'- 6 1/2	4	8"	9"	2000 - S - 14 - 20 - 93 - 30			7473 #
		20'-0		10'	12'- 4	6			2000 - S - 10 - 20 - 103 - 20			7010 #
		25'-0		10'	12'- 4	5			2000 - S - 10 - 20 - 103 - 25			6657 #
103'-0	54"	20'-0	20'-4	12'	14'- 4	6	6"	8"	2000 - S - 12 - 20 - 103 - 20			7207 #
		25'-0		12'	14'- 4	5			2000 - S - 12 - 20 - 103 - 25			6821 #
		20'-0		14'	16'- 6 1/2	6	8"	9"	2000 - S - 14 - 20 - 103 - 20			9274 #
		25'-0		14'	16'- 6 1/2	5			2000 - S - 14 - 20 - 103 - 25			8543 #
		30'-0		10'	12'- 4	5			2000 - S - 10 - 20 - 123 - 30			7572 #
123'-0	63"	30'-0	20'-4	12'	14'- 4	5	6"	8"	2000 - S - 12 - 20 - 123 - 30			7736 #
		30'-0		14'	16'- 6 1/2	5	8"	9"	2000 - S - 14 - 20 - 123 - 30			9459 #

Price of Crane System includes:

Weights & Dimensions are approximate and may change without notice

- > Bridge
- > End Trucks
- > Hoist-Trolley
- > Floor Anchor Bolts
- > Runways
- > Support Frames
- > Hanger Assemblies
- > Splice Assemblies
- > Festoon Cable Trolleys
- > 4-Cond #14 Flat Cable
- > Festoon Clamps
- > Festoon Stack-up Section

Note: Adequacy of floor to support loads imposed by crane system to be determined by others, 6" nominal floor thickness.

BRACING TO BUILDING IS NOT REQUIRED. ALL SYSTEMS SUITABLE FOR SEISMIC ZONE 4.

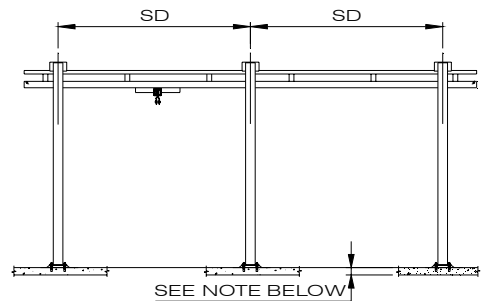
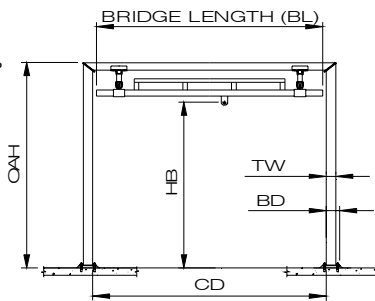
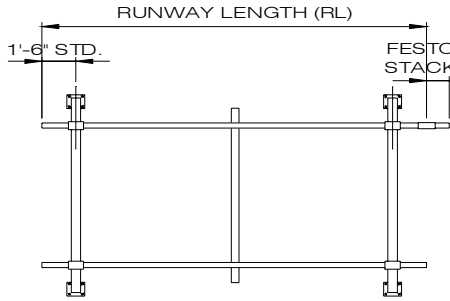
(01-01-07)

21 of 29

**CRANEVEYOR CORP**

**2000# CAPACITY**

**BRIDGE LENGTH (BL) 23' - 0"**



RUNWAY LENGTH	FS	(Max) SD	CD	HB	OAH	NO. SUPPORT ASS'YS	TW	BD	MODEL NUMBER			WEIGHT
									CAP	S	HB	
23'-0	12"	20'-0	23'-4	10'	12'- 4	2	6"	8"	2000 - S - 10 - 23 - 23 - 20	2371 #		
		20'-0		12'	14'- 4	2			2000 - S - 12 - 23 - 23 - 20	2436 #		
		20'-0		14'	16'- 6 1/2	2			2000 - S - 14 - 23 - 23 - 20	3160 #		
28'-0	18"	25'-0	23'-4	10'	12'- 4	2	6"	8"	2000 - S - 10 - 23 - 28 - 25	2581 #		
		25'-0		12'	14'- 4	2			2000 - S - 12 - 23 - 28 - 25	2646 #		
		25'-0		14'	16'- 6 1/2	2			2000 - S - 14 - 23 - 28 - 25	3370 #		
33'-0	18"	20'-0	23'-4	10'	12'- 4	3	6"	8"	2000 - S - 10 - 23 - 33 - 20	3222 #		
		20'-0		12'	14'- 4	3			2000 - S - 12 - 23 - 33 - 20	3320 #		
		20'-0		14'	16'- 6 1/2	3			2000 - S - 14 - 23 - 33 - 20	4406 #		
33'-0	18"	30'-0	23'-4	10'	12'- 4	2	6"	8"	2000 - S - 10 - 23 - 33 - 30	2841 #		
		30'-0		12'	14'- 4	2			2000 - S - 12 - 23 - 33 - 30	2906 #		
		30'-0		14'	16'- 6 1/2	2			2000 - S - 14 - 23 - 33 - 30	3630 #		
43'-0	24"	20'-0	23'-4	10'	12'- 4	3	6"	8"	2000 - S - 10 - 23 - 43 - 20	3578 #		
		20'-0		12'	14'- 4	3			2000 - S - 12 - 23 - 43 - 20	3677 #		
		20'-0		14'	16'- 6 1/2	3			2000 - S - 14 - 23 - 43 - 20	4763 #		
53'-0	36"	20'-0	23'-4	10'	12'- 4	4	6"	8"	2000 - S - 10 - 23 - 53 - 20	4430 #		
		25'-0		10'	12'- 4	3			2000 - S - 10 - 23 - 53 - 25	3995 #		
		20'-0		12'	14'- 4	4			2000 - S - 12 - 23 - 53 - 20	4561 #		
		25'-0		12'	14'- 4	3			2000 - S - 12 - 23 - 53 - 25	4093 #		
		20'-0		14'	16'- 6 1/2	4			2000 - S - 14 - 23 - 53 - 20	6009 #		
63'-0	36"	20'-0	23'-4	10'	12'- 4	4	6"	8"	2000 - S - 10 - 23 - 63 - 20	4786 #		
		20'-0		12'	14'- 4	4			2000 - S - 12 - 23 - 63 - 20	4917 #		
		20'-0		14'	16'- 6 1/2	4			2000 - S - 14 - 23 - 63 - 20	6365 #		
		30'-0		10'	12'- 4	3			2000 - S - 10 - 23 - 63 - 30	4473 #		
		30'-0		12'	14'- 4	3			2000 - S - 12 - 23 - 63 - 30	4572 #		
63'-0	36"	30'-0	23'-4	14'	16'- 6 1/2	3	8"	9"	2000 - S - 14 - 23 - 63 - 30	5658 #		
		25'-0		10'	12'- 4	4	6"	8"	2000 - S - 10 - 23 - 78 - 25	5409 #		
		25'-0		12'	14'- 4	4	6"	8"	2000 - S - 12 - 23 - 78 - 25	5540 #		
78'-0	54"	25'-0	23'-4	14'	16'- 6 1/2	4	8"	9"	2000 - S - 14 - 23 - 78 - 25	6988 #		
		20'-0		10'	12'- 4	5	6"	8"	2000 - S - 10 - 23 - 83 - 20	5994 #		
		20'-0		12'	14'- 4	5	6"	8"	2000 - S - 12 - 23 - 83 - 20	6158 #		
83'-0	54"	20'-0	23'-4	14'	16'- 6 1/2	5	8"	9"	2000 - S - 14 - 23 - 83 - 20	7968 #		
		30'-0		10'	12'- 4	4	6"	8"	2000 - S - 10 - 23 - 93 - 30	6106 #		
		30'-0		12'	14'- 4	4	6"	8"	2000 - S - 12 - 23 - 93 - 30	6238 #		
93'-0	54"	30'-0	23'-4	14'	16'- 6 1/2	4	8"	9"	2000 - S - 14 - 23 - 93 - 30	7685 #		
		20'-0		10'	12'- 4	6	6"	8"	2000 - S - 10 - 23 - 103 - 20	7202 #		
		25'-0		10'	12'- 4	5	6"	8"	2000 - S - 10 - 23 - 103 - 25	6824 #		
103'-0	54"	20'-0	23'-4	12'	14'- 4	6	6"	8"	2000 - S - 12 - 23 - 103 - 20	7398 #		
		25'-0		12'	14'- 4	5			2000 - S - 12 - 23 - 103 - 25	6988 #		
		20'-0		14'	16'- 6 1/2	6			8"	9"	2000 - S - 14 - 23 - 103 - 20	9570 #
		25'-0		14'	16'- 6 1/2	5			8"	9"	2000 - S - 14 - 23 - 103 - 25	8797 #
		30'-0		10'	12'- 4	5			6"	8"	2000 - S - 10 - 23 - 123 - 30	7739 #
123'-0	63"	30'-0	23'-4	12'	14'- 4	5	6"	8"	2000 - S - 12 - 23 - 123 - 30	7903 #		
		30'-0		14'	16'- 6 1/2	5	8"	9"	2000 - S - 14 - 23 - 123 - 30	9713 #		

**Price of Crane System includes:**

Weights & Dimensions are approximate and may change without notice

- > Bridge
- > End Trucks
- > Hoist-Trolley
- > Floor Anchor Bolts
- > Runways
- > Support Frames
- > Hanger Assemblies
- > Splice Assemblies
- > Festoon Cable Trolleys
- > 4-Cond #14 Flat Cable
- > Festoon Clamps
- > Festoon Stack-up Section

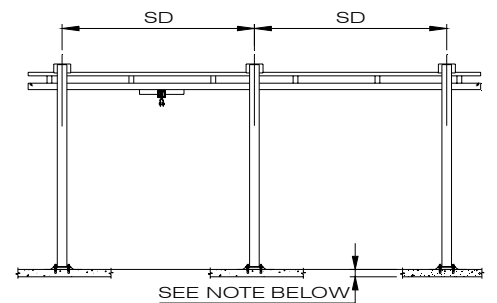
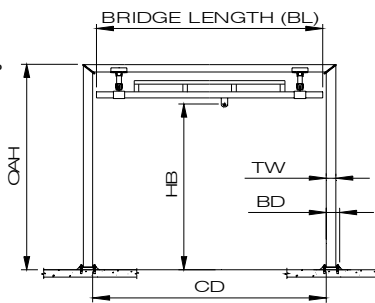
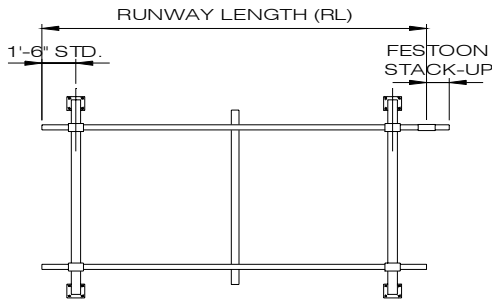
Note: Adequacy of floor to support loads imposed by crane system to be determined by others, 6" nominal floor thickness.

BRACING TO BUILDING IS NOT REQUIRED. ALL SYSTEMS SUITABLE FOR SEISMIC ZONE 4. ('01-01-07) 22 of 29

**CRANEVEYOR CORP**

**2000# CAPACITY**

**BRIDGE LENGTH (BL) 28' - 0"**



RUNWAY LENGTH	FS	(Max) SD	CD	HB	OAH	NO. SUPPORT ASS'YS	TW	BD	MODEL NUMBER			WEIGHT
									CAP	S	HB	
23'-0	12"	20'-0	28'-4	10'	12'- 7 1/4	2	6"	8"	2000 - S - 10 - 28 - 23 - 20			2769 #
		20'-0		12'	14'- 7 1/4	2			2000 - S - 12 - 28 - 23 - 20			2834 #
		20'-0		14'	16'- 9 3/4	2			2000 - S - 14 - 28 - 23 - 20			3616 #
28'-0	18"	25'-0	28'-4	10'	12'- 7 1/4	2	6"	8"	2000 - S - 10 - 28 - 28 - 25			2979 #
		25'-0		12'	14'- 7 1/4	2			2000 - S - 12 - 28 - 28 - 25			3044 #
		25'-0		14'	16'- 9 3/4	2			2000 - S - 14 - 28 - 28 - 25			3826 #
33'-0	18"	20'-0	28'-4	10'	12'- 7 1/4	3	6"	8"	2000 - S - 10 - 28 - 33 - 20			3661 #
		20'-0		12'	14'- 7 1/4	3			2000 - S - 12 - 28 - 33 - 20			3759 #
		20'-0		14'	16'- 9 3/4	3			2000 - S - 14 - 28 - 33 - 20			4932 #
33'-0	18"	30'-0	28'-4	10'	12'- 7 1/4	2	6"	8"	2000 - S - 10 - 28 - 33 - 30			3239 #
		30'-0		12'	14'- 7 1/4	2			2000 - S - 12 - 28 - 33 - 30			3304 #
		30'-0		14'	16'- 9 3/4	2			2000 - S - 14 - 28 - 33 - 30			4086 #
43'-0	24"	20'-0	28'-4	10'	12'- 7 1/4	3	6"	8"	2000 - S - 10 - 28 - 43 - 20			4017 #
		20'-0		12'	14'- 7 1/4	3			2000 - S - 12 - 28 - 43 - 20			4116 #
		20'-0		14'	16'- 9 3/4	3			2000 - S - 14 - 28 - 43 - 20			5289 #
53'-0	36"	20'-0	28'-4	10'	12'- 7 1/4	4	6"	8"	2000 - S - 10 - 28 - 53 - 20			4910 #
		25'-0		10'	12'- 7 1/4	3			2000 - S - 10 - 28 - 53 - 25			4434 #
		20'-0		12'	14'- 7 1/4	4			2000 - S - 12 - 28 - 53 - 20			5041 #
		25'-0		12'	14'- 7 1/4	3			2000 - S - 12 - 28 - 53 - 25			4532 #
		20'-0		14'	16'- 9 3/4	4			2000 - S - 14 - 28 - 53 - 20			6605 #
63'-0	36"	20'-0	28'-4	10'	12'- 7 1/4	4	6"	8"	2000 - S - 10 - 28 - 63 - 20			5266 #
		20'-0		12'	14'- 7 1/4	4			2000 - S - 12 - 28 - 63 - 20			5397 #
		20'-0		14'	16'- 9 3/4	4			2000 - S - 14 - 28 - 63 - 20			6961 #
		30'-0		10'	12'- 7 1/4	3			2000 - S - 10 - 28 - 63 - 30			4912 #
		30'-0		12'	14'- 7 1/4	3			2000 - S - 12 - 28 - 63 - 30			5011 #
63'-0	36"	30'-0	28'-4	14'	16'- 9 3/4	3	6"	8"	2000 - S - 14 - 28 - 63 - 30			6184 #
		25'-0		10'	12'- 7 1/4	4			2000 - S - 10 - 28 - 78 - 25			5889 #
		25'-0		12'	14'- 7 1/4	4			2000 - S - 12 - 28 - 78 - 25			6020 #
78'-0	54"	25'-0	28'-4	14'	16'- 9 3/4	4	6"	8"	2000 - S - 14 - 28 - 78 - 25			7584 #
		20'-0		10'	12'- 7 1/4	5			2000 - S - 10 - 28 - 83 - 20			6515 #
		20'-0		12'	14'- 7 1/4	5			2000 - S - 12 - 28 - 83 - 20			6679 #
83'-0	54"	20'-0	28'-4	14'	16'- 9 3/4	5	6"	8"	2000 - S - 14 - 28 - 83 - 20			8634 #
		30'-0		10'	12'- 7 1/4	4			2000 - S - 10 - 28 - 93 - 30			6586 #
		30'-0		12'	14'- 7 1/4	4			2000 - S - 12 - 28 - 93 - 30			6718 #
93'-0	54"	30'-0	28'-4	14'	16'- 9 3/4	4	6"	8"	2000 - S - 14 - 28 - 93 - 30			8281 #
		20'-0		10'	12'- 7 1/4	6			2000 - S - 10 - 28 - 103 - 20			7764 #
		25'-0		10'	12'- 7 1/4	5			2000 - S - 10 - 28 - 103 - 25			7345 #
103'-0	54"	20'-0	28'-4	12'	14'- 7 1/4	6	6"	8"	2000 - S - 12 - 28 - 103 - 20			7960 #
		25'-0		12'	14'- 7 1/4	5			2000 - S - 12 - 28 - 103 - 25			7509 #
		20'-0		14'	16'- 9 3/4	6			2000 - S - 14 - 28 - 103 - 20			10306 #
		25'-0		14'	16'- 9 3/4	5			2000 - S - 14 - 28 - 103 - 25			9463 #
		30'-0		10'	12'- 7 1/4	5			2000 - S - 10 - 28 - 123 - 30			8260 #
123'-0	63"	30'-0	28'-4	12'	14'- 7 1/4	5	6"	8"	2000 - S - 12 - 28 - 123 - 30			8424 #
		30'-0		14'	16'- 9 3/4	5			2000 - S - 14 - 28 - 123 - 30			10379 #
		30'-0		10'	12'- 7 1/4	5			2000 - S - 10 - 28 - 123 - 30			8260 #

Price of Crane System includes:

- > Bridge
- > End Trucks
- > Hoist-Trolley
- > Floor Anchor Bolts

Weights & Dimensions are approximate and may change without notice

- > Runways
- > Support Frames
- > Hanger Assemblies
- > Splice Assemblies
- > Festoon Cable Trolleys
- > 4-Cond #14 Flat Cable
- > Festoon Clamps
- > Festoon Stack-up Section

Note: Adequacy of floor to support loads imposed by crane system to be determined by others, 6" nominal floor thickness.

BRACING TO BUILDING IS NOT REQUIRED. ALL SYSTEMS SUITABLE FOR SEISMIC ZONE 4.

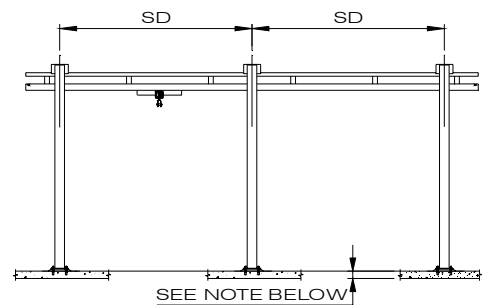
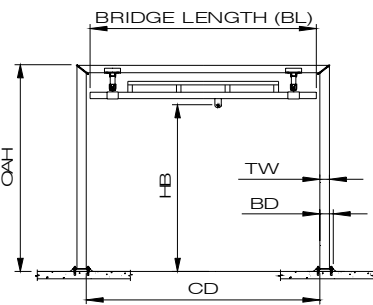
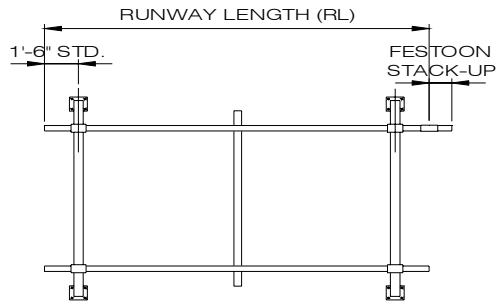
('01-01-07)

23 of 29

**CRANEVEYOR CORP**

**2000# CAPACITY**

**BRIDGE LENGTH (BL) 34' - 0"**



RUNWAY LENGTH	FS	(Max) SD	CD	HB	OAH	NO. SUPPORT ASS'YS	TW	BD	MODEL NUMBER			WEIGHT
									CAP	S	HB	
23'-0	12"	20'-0	34'-4	10'	12'- 7 1/4	2			2000 - S - 10 - 34 - 23 - 20			3680 #
		20'-0		12'	14'- 7 1/4	2	6"	8"	2000 - S - 12 - 34 - 23 - 20			3792 #
		20'-0		14'	16'- 9 3/4	2	8"	9"	2000 - S - 14 - 34 - 23 - 20			3904 #
28'-0	18"	25'-0	34'-4	10'	12'- 7 1/4	2			2000 - S - 10 - 34 - 28 - 25			3890 #
		25'-0		12'	14'- 7 1/4	2	6"	8"	2000 - S - 12 - 34 - 28 - 25			4002 #
		25'-0		14'	16'- 9 3/4	2	8"	9"	2000 - S - 14 - 34 - 28 - 25			4114 #
33'-0	18"	20'-0	34'-4	10'	12'- 7 1/4	3			2000 - S - 10 - 34 - 33 - 20			4968 #
		20'-0		12'	14'- 7 1/4	3	6"	8"	2000 - S - 12 - 34 - 33 - 20			5136 #
		20'-0		14'	16'- 9 3/4	3	8"	9"	2000 - S - 14 - 34 - 33 - 20			5304 #
33'-0	18"	30'-0	34'-4	10'	12'- 7 1/4	2			2000 - S - 10 - 34 - 33 - 30			4150 #
		30'-0		12'	14'- 7 1/4	2	6"	8"	2000 - S - 12 - 34 - 33 - 30			4262 #
		30'-0		14'	16'- 9 3/4	2	8"	9"	2000 - S - 14 - 34 - 33 - 30			4374 #
43'-0	24"	20'-0	34'-4	10'	12'- 7 1/4	3			2000 - S - 10 - 34 - 43 - 20			5325 #
		20'-0		12'	14'- 7 1/4	3	6"	8"	2000 - S - 12 - 34 - 43 - 20			5493 #
		20'-0		14'	16'- 9 3/4	3	8"	9"	2000 - S - 14 - 34 - 43 - 20			5661 #
53'-0	36"	20'-0	34'-4	10'	12'- 7 1/4	4			2000 - S - 10 - 34 - 53 - 20			6613 #
		25'-0		10'	12'- 7 1/4	3			2000 - S - 10 - 34 - 53 - 25			5741 #
		20'-0		12'	14'- 7 1/4	4	6"	8"	2000 - S - 12 - 34 - 53 - 20			6837 #
		25'-0		12'	14'- 7 1/4	3			2000 - S - 12 - 34 - 53 - 25			5909 #
		20'-0		14'	16'- 9 3/4	4	8"	9"	2000 - S - 14 - 34 - 53 - 20			7061 #
63'-0	36"	25'-0	34'-4	14'	16'- 9 3/4	3			2000 - S - 14 - 34 - 53 - 25			6077 #
		20'-0		10'	12'- 7 1/4	4			2000 - S - 10 - 34 - 63 - 20			6969 #
		20'-0		12'	14'- 7 1/4	4	6"	8"	2000 - S - 12 - 34 - 63 - 20			7193 #
		20'-0		14'	16'- 9 3/4	4	8"	9"	2000 - S - 14 - 34 - 63 - 20			7417 #
		30'-0		10'	12'- 7 1/4	3			2000 - S - 10 - 34 - 63 - 30			6220 #
63'-0	36"	30'-0	34'-4	12'	14'- 7 1/4	3	6"	8"	2000 - S - 12 - 34 - 63 - 30			6388 #
		30'-0		14'	16'- 9 3/4	3	8"	9"	2000 - S - 14 - 34 - 63 - 30			6556 #
		25'-0		10'	12'- 7 1/4	4			2000 - S - 10 - 34 - 78 - 25			7592 #
78'-0	54"	25'-0	34'-4	12'	14'- 7 1/4	4	6"	8"	2000 - S - 12 - 34 - 78 - 25			7816 #
		25'-0		14'	16'- 9 3/4	4	8"	9"	2000 - S - 14 - 34 - 78 - 25			8040 #
		20'-0		10'	12'- 7 1/4	5			2000 - S - 10 - 34 - 83 - 20			8614 #
83'-0	54"	20'-0	34'-4	12'	14'- 7 1/4	5	6"	8"	2000 - S - 12 - 34 - 83 - 20			8894 #
		20'-0		14'	16'- 9 3/4	5	8"	9"	2000 - S - 14 - 34 - 83 - 20			9174 #
		30'-0		10'	12'- 7 1/4	4			2000 - S - 10 - 34 - 93 - 30			8289 #
93'-0	54"	30'-0	34'-4	12'	14'- 7 1/4	4	6"	8"	2000 - S - 12 - 34 - 93 - 30			8513 #
		30'-0		14'	16'- 9 3/4	4	8"	9"	2000 - S - 14 - 34 - 93 - 30			8737 #
		20'-0		10'	12'- 7 1/4	6			2000 - S - 10 - 34 - 103 - 20			10258 #
103'-0	54"	25'-0	34'-4	10'	12'- 7 1/4	5			2000 - S - 10 - 34 - 103 - 25			9443 #
		20'-0		12'	14'- 7 1/4	6	6"	8"	2000 - S - 12 - 34 - 103 - 20			10594 #
		25'-0		12'	14'- 7 1/4	5			2000 - S - 12 - 34 - 103 - 25			9723 #
		20'-0		14'	16'- 9 3/4	6	8"	9"	2000 - S - 14 - 34 - 103 - 20			10930 #
		25'-0		14'	16'- 9 3/4	5			2000 - S - 14 - 34 - 103 - 25			10003 #
123'-0	63"	30'-0	34'-4	10'	12'- 7 1/4	5			2000 - S - 10 - 34 - 123 - 30			10359 #
		30'-0		12'	14'- 7 1/4	5	6"	8"	2000 - S - 12 - 34 - 123 - 30			10639 #
		30'-0		14'	16'- 9 3/4	5	8"	9"	2000 - S - 14 - 34 - 123 - 30			10919 #

Price of Crane System includes:

Weights & Dimensions are approximate and may change without notice

- > Bridge
- > End Trucks
- > Hoist-Trolley
- > Floor Anchor Bolts
- > Runways
- > Support Frames
- > Hanger Assemblies
- > Splice Assemblies
- > Festoon Cable Trolleys
- > 4-Cond #14 Flat Cable
- > Festoon Clamps
- > Festoon Stack-up Section

Note: Adequacy of floor to support loads imposed by crane system to be determined by others, 6" nominal floor thickness.

BRACING TO BUILDING IS NOT REQUIRED. ALL SYSTEMS SUITABLE FOR SEISMIC ZONE 4.

(01-01-07)

24 of 29