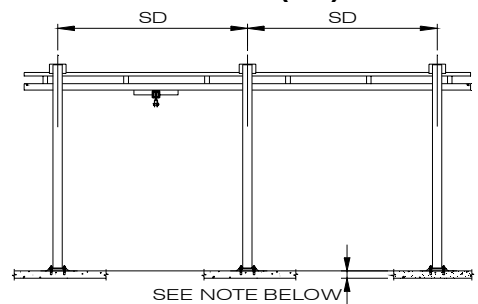
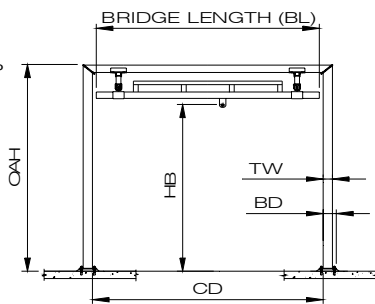
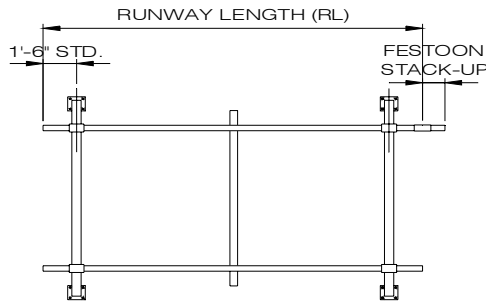


**CRANEVEYOR CORP**

**500# CAPACITY**

**BRIDGE LENGTH (BL) 10' - 0"**



RUNWAY LENGTH RL	FS	(Max) SD	CD	HB	OAH	NO. SUPPORT FRAMES	TW	BD	MODEL NUMBER					WEIGHT	
									CAP	S	HB	BL	RL		SD
11'-6	12"	20'-0	10'-4	10'	11' - 8 13/16	2	5"	7 1/2"	500 - S - 10 - 10 - 11 - 20					1100 #	
		20'-0		12'	13' - 8 13/16	2			500 - S - 12 - 10 - 11 - 20				1166 #		
		20'-0		14'	15' - 8 13/16	2			500 - S - 14 - 10 - 11 - 20				1232 #		
23'-0	12"	20'-0	10'-4	10'	11' - 8 13/16	2	5"	7 1/2"	500 - S - 10 - 10 - 23 - 20					1302 #	
		20'-0		12'	13' - 8 13/16	2			500 - S - 12 - 10 - 23 - 20				1368 #		
		20'-0		14'	15' - 8 13/16	2			500 - S - 14 - 10 - 23 - 20				1434 #		
28'-0	18"	25'-0	10'-4	10'	11' - 8 13/16	2	5"	7 1/2"	500 - S - 10 - 10 - 28 - 25					1476 #	
		25'-0		12'	13' - 8 13/16	2			500 - S - 12 - 10 - 28 - 25				1542 #		
		25'-0		14'	15' - 8 13/16	2			500 - S - 14 - 10 - 28 - 25				1608 #		
33'-0	18"	20'-0	10'-4	10'	11' - 8 13/16	3	5"	7 1/2"	500 - S - 10 - 10 - 33 - 20					1866 #	
		20'-0		12'	13' - 8 13/16	3			500 - S - 12 - 10 - 33 - 20				1965 #		
		20'-0		14'	15' - 8 13/16	3			500 - S - 14 - 10 - 33 - 20				2063 #		
33'-0'	18"	30'-0	10'-4	10'	11' - 8 13/16	2	5"	7 1/2"	500 - S - 10 - 10 - 33 - 30					1552 #	
		30'-0		12'	13' - 8 13/16	2			500 - S - 12 - 10 - 33 - 30				1618 #		
		30'-0		14'	15' - 8 13/16	2			500 - S - 14 - 10 - 33 - 30				2191 #		
43'-0	24"	20'-0	10'-4	10'	11' - 8 13/16	3	5"	7 1/2"	500 - S - 10 - 10 - 43 - 20					2042 #	
		20'-0		12'	13' - 8 13/16	3			500 - S - 12 - 10 - 43 - 20				2140 #		
		20'-0		14'	15' - 8 13/16	3			500 - S - 14 - 10 - 43 - 20				2239 #		
53'-0	36"	20'-0	10'-4	10'	11' - 8 13/16	4	5"	7 1/2"	500 - S - 10 - 10 - 53 - 20					2606 #	
		25'-0		10'	11' - 8 13/16	3			500 - S - 10 - 10 - 53 - 25				2381 #		
		20'-0		12'	13' - 8 13/16	4			500 - S - 12 - 10 - 53 - 20				2737 #		
		25'-0		12'	13' - 8 13/16	3			500 - S - 12 - 10 - 53 - 25				2479 #		
		20'-0		14'	15' - 8 13/16	4			500 - S - 14 - 10 - 53 - 20				2868 #		
63'-0	36"	20'-0	10'-4	10'	11' - 8 13/16	4	5"	7 1/2"	500 - S - 10 - 10 - 63 - 20					2781 #	
		20'-0		12'	13' - 8 13/16	4			500 - S - 12 - 10 - 63 - 20				2912 #		
		20'-0		14'	15' - 8 13/16	4			500 - S - 14 - 10 - 63 - 20				3044 #		
		30'-0		10'	11' - 8 13/16	3			500 - S - 10 - 10 - 63 - 30				2518 #		
		30'-0		12'	13' - 8 13/16	3			500 - S - 12 - 10 - 63 - 30				2616 #		
78'-0	54"	25'-0	10'-4	10'	11' - 8 13/16	4	5"	7 1/2"	500 - S - 10 - 10 - 78 - 25					3285 #	
		25'-0		12'	13' - 8 13/16	4			500 - S - 12 - 10 - 78 - 25				3416 #		
		25'-0		14'	15' - 8 13/16	4			500 - S - 14 - 10 - 78 - 25				3547 #		
83'-0	54"	20'-0	10'-4	10'	11' - 8 13/16	5	5"	7 1/2"	500 - S - 10 - 10 - 83 - 20					3521 #	
		20'-0		12'	13' - 8 13/16	5			500 - S - 12 - 10 - 83 - 20				3685 #		
		20'-0		14'	15' - 8 13/16	5			500 - S - 14 - 10 - 83 - 20				3849 #		
93'-0	54"	30'-0	10'-4	10'	11' - 8 13/16	4	5"	7 1/2"	500 - S - 10 - 10 - 93 - 30					3483 #	
		30'-0		12'	13' - 8 13/16	4			500 - S - 12 - 10 - 93 - 30				3614 #		
		30'-0		14'	15' - 8 13/16	4			500 - S - 14 - 10 - 93 - 30				4760 #		
103'-0	54"	20'-0	10'-4	10'	11' - 8 13/16	6	5"	7 1/2"	500 - S - 10 - 10 - 103 - 20					4260 #	
		25'-0		10'	11' - 8 13/16	5			500 - S - 10 - 10 - 103 - 25				4189 #		
		20'-0		12'	13' - 8 13/16	6			500 - S - 12 - 10 - 103 - 20				4457 #		
		25'-0		12'	13' - 8 13/16	5			500 - S - 12 - 10 - 103 - 25				4353 #		
		20'-0		14'	15' - 8 13/16	6			500 - S - 14 - 10 - 103 - 20				4654 #		
123'-0	63"	30'-0	10'-4	10'	11' - 8 13/16	5	5"	7 1/2"	500 - S - 10 - 10 - 123 - 30					4448 #	
		30'-0		12'	13' - 8 13/16	5			500 - S - 12 - 10 - 123 - 30				4612 #		
		30'-0		14'	15' - 8 13/16	5			500 - S - 14 - 10 - 123 - 30				6045 #		

Price of Crane System includes: Weights & Dimensions are approximate and may change without notice

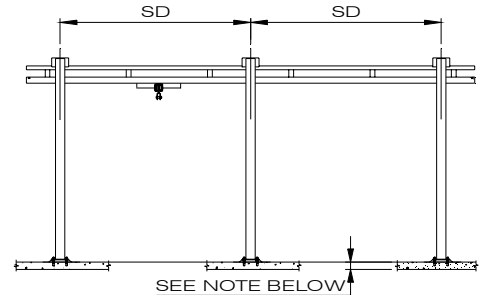
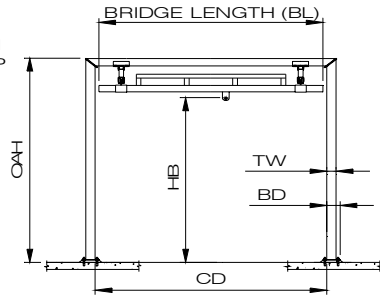
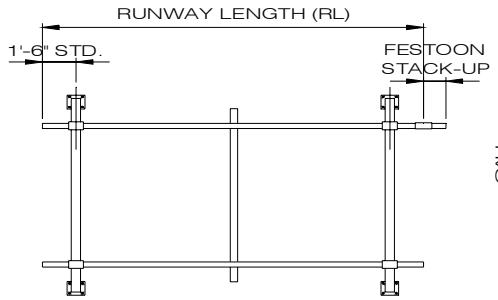
- > Bridge
- > End Trucks
- > Hoist-Trolley
- > Floor Anchor Bolts
- > Runways
- > Support Frames
- > Hanger Assemblies
- > Splice Assemblies
- > Festoon Cable Trolleys
- > 4-Cond #14 Flat Cable
- > Festoon Clamps
- > Festoon Stack-up Section

Note: Adequacy of floor to support loads imposed by crane system to be determined by others, 6" nominal floor thickness.  
 BRACING TO BUILDING IS NOT REQUIRED. ALL SYSTEMS SUITABLE FOR SEISMIC ZONE 4. (01-01-07) 7 of 29

**CRANEVEYOR CORP**

**500# CAPACITY**

**BRIDGE LENGTH (BL) 15' - 0"**



RUNWAY LENGTH RL	FS	(Max) SD	CD	HB	OAH	NO. SUPPORT FRAMES	TW	BD	MODEL NUMBER			WEIGHT
									CAP	S	HB	
23'-0"	12"	20'-0"	15'-4"	10'	11' - 8 13/16	2	5"	7 1/2"	500 - S - 10 - 15 - 23 - 20			1436 #
		20'-0"		12'	13' - 8 13/16	2			500 - S - 12 - 15 - 23 - 20		1502 #	
		20'-0"		14'	15' - 8 13/16	2			500 - S - 14 - 15 - 23 - 20		1568 #	
28'-0"	18"	25'-0"	15'-4"	10'	11' - 8 13/16	2	5"	7 1/2"	500 - S - 10 - 15 - 28 - 25			1610 #
		25'-0"		12'	13' - 8 13/16	2			500 - S - 12 - 15 - 28 - 25		1676 #	
		25'-0"		14'	15' - 8 13/16	2			500 - S - 14 - 15 - 28 - 25		1742 #	
33'-0"	18"	20'-0"	15'-4"	10'	11' - 8 13/16	3	5"	7 1/2"	500 - S - 10 - 15 - 33 - 20			2041 #
		20'-0"		12'	13' - 8 13/16	3			500 - S - 12 - 15 - 33 - 20		2140 #	
		20'-0"		14'	15' - 8 13/16	3			500 - S - 14 - 15 - 33 - 20		2238 #	
33'-0"	18"	30'-0"	15'-4"	10'	11' - 8 13/16	2	5"	7 1/2"	500 - S - 10 - 15 - 33 - 30			1686 #
		30'-0"		12'	13' - 8 13/16	2			500 - S - 12 - 15 - 33 - 30		1752 #	
		30'-0"		14'	15' - 8 13/16	2			500 - S - 14 - 15 - 33 - 30		2383 #	
43'-0"	24"	20'-0"	15'-4"	10'	11' - 8 13/16	3	5"	7 1/2"	500 - S - 10 - 15 - 43 - 20			2217 #
		20'-0"		12'	13' - 8 13/16	3			500 - S - 12 - 15 - 43 - 20		2315 #	
		20'-0"		14'	15' - 8 13/16	3			500 - S - 14 - 15 - 43 - 20		2414 #	
53'-0"	36"	20'-0"	15'-4"	10'	11' - 8 13/16	4	5"	7 1/2"	500 - S - 10 - 15 - 53 - 20			2822 #
		25'-0"		10'	11' - 8 13/16	3			500 - S - 10 - 15 - 53 - 25		2556 #	
		20'-0"		12'	13' - 8 13/16	4			500 - S - 12 - 15 - 53 - 20		2953 #	
		25'-0"		12'	13' - 8 13/16	3			500 - S - 12 - 15 - 53 - 25		2654 #	
		20'-0"		14'	15' - 8 13/16	4			500 - S - 14 - 15 - 53 - 20		3084 #	
63'-0"	36"	20'-0"	15'-4"	10'	11' - 8 13/16	4	5"	7 1/2"	500 - S - 10 - 15 - 63 - 20			2997 #
		20'-0"		12'	13' - 8 13/16	4			500 - S - 12 - 15 - 63 - 20		3128 #	
		20'-0"		14'	15' - 8 13/16	4			500 - S - 14 - 15 - 63 - 20		3260 #	
63'-0"	36"	30'-0"	15'-4"	10'	11' - 8 13/16	3	5"	7 1/2"	500 - S - 10 - 15 - 63 - 30			2693 #
		30'-0"		12'	13' - 8 13/16	3			500 - S - 12 - 15 - 63 - 30		2791 #	
		30'-0"		14'	15' - 8 13/16	3			500 - S - 14 - 15 - 63 - 30		3738 #	
78'-0"	54"	25'-0"	15'-4"	10'	11' - 8 13/16	4	5"	7 1/2"	500 - S - 10 - 15 - 78 - 25			3501 #
		25'-0"		12'	13' - 8 13/16	4			500 - S - 12 - 15 - 78 - 25		3632 #	
		25'-0"		14'	15' - 8 13/16	4			500 - S - 14 - 15 - 78 - 25		3763 #	
83'-0"	54"	20'-0"	15'-4"	10'	11' - 8 13/16	5	5"	7 1/2"	500 - S - 10 - 15 - 83 - 20			3778 #
		20'-0"		12'	13' - 8 13/16	5			500 - S - 12 - 15 - 83 - 20		3942 #	
		20'-0"		14'	15' - 8 13/16	5			500 - S - 14 - 15 - 83 - 20		4106 #	
93'-0"	54"	30'-0"	15'-4"	10'	11' - 8 13/16	4	5"	7 1/2"	500 - S - 10 - 15 - 93 - 30			3699 #
		30'-0"		12'	13' - 8 13/16	4			500 - S - 12 - 15 - 93 - 30		3830 #	
		30'-0"		14'	15' - 8 13/16	4			500 - S - 14 - 15 - 93 - 30		5092 #	
103'-0"	54"	20'-0"	15'-4"	10'	11' - 8 13/16	6	5"	7 1/2"	500 - S - 10 - 15 - 103 - 20			4558 #
		25'-0"		10'	11' - 8 13/16	5			500 - S - 10 - 15 - 103 - 25		4446 #	
		20'-0"		12'	13' - 8 13/16	6			500 - S - 12 - 15 - 103 - 20		4755 #	
		25'-0"		12'	13' - 8 13/16	5			500 - S - 12 - 15 - 103 - 25		4610 #	
		20'-0"		14'	15' - 8 13/16	6			500 - S - 14 - 15 - 103 - 20		4952 #	
123'-0"	63"	30'-0"	15'-4"	10'	11' - 8 13/16	5	5"	7 1/2"	500 - S - 10 - 15 - 123 - 30			4705 #
		30'-0"		12'	13' - 8 13/16	5			500 - S - 12 - 15 - 123 - 30		4869 #	
		30'-0"		14'	15' - 8 13/16	5			500 - S - 14 - 15 - 123 - 30		6447 #	

Price of Crane System includes:

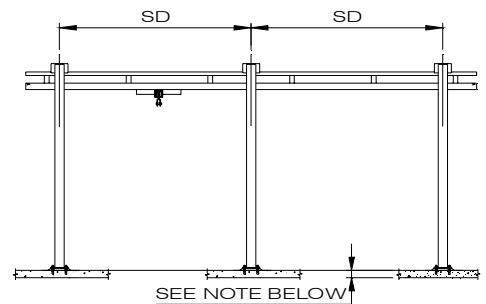
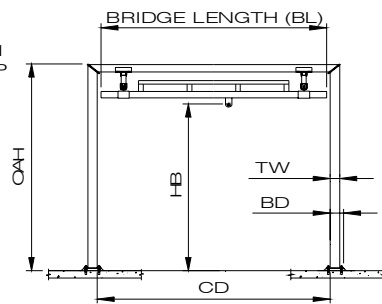
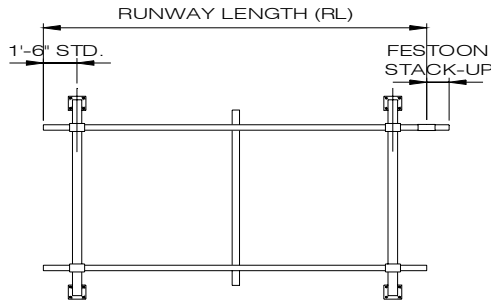
- > Bridge
- > End Trucks
- > Hoist-Trolley
- > Floor Anchor Bolts
- > Runways
- > Support Frames
- > Hanger Assemblies
- > Splice Assemblies
- > Festoon Cable Trolleys
- > 4-Cond #14 Flat Cable
- > Festoon Clamps
- > Festoon Stack-up Section

Note: Adequacy of floor to support loads imposed by crane system to be determined by others, 6" nominal floor thickness.  
 BRACING TO BUILDING IS NOT REQUIRED. ALL SYSTEMS SUITABLE FOR SEISMIC ZONE 4. (01-01-07) 8 of 29

**CRANEVEYOR CORP**

**500# CAPACITY**

**BRIDGE LENGTH (BL) 20' - 0"**



RUNWAY LENGTH RL	FS	(Max) SD	CD	HB	OAH	NO. SUPPORT FRAMES	TW	BD	MODEL NUMBER				WEIGHT
									CAP	S	HB	BL RL SD	
23'-0"	12"	20'-0"	20'-4"	10'	11' - 8 13/16	2	5"	7 1/2"	500 - S - 10 - 20 - 23 - 20				1544 #
		20'-0"		12'	13' - 8 13/16	2			500 - S - 12 - 20 - 23 - 20			1610 #	
		20'-0"		14'	15' - 8 13/16	2			500 - S - 14 - 20 - 23 - 20			1676 #	
28'-0"	18"	25'-0"	20'-4"	10'	11' - 8 13/16	2	5"	7 1/2"	500 - S - 10 - 20 - 28 - 25				1718 #
		25'-0"		12'	13' - 8 13/16	2			500 - S - 12 - 20 - 28 - 25			1784 #	
		25'-0"		14'	15' - 8 13/16	2			500 - S - 14 - 20 - 28 - 25			1850 #	
33'-0"	18"	20'-0"	20'-4"	10'	11' - 8 13/16	3	5"	7 1/2"	500 - S - 10 - 20 - 33 - 20				2190 #
		20'-0"		12'	13' - 8 13/16	3			500 - S - 12 - 20 - 33 - 20			2289 #	
		20'-0"		14'	15' - 8 13/16	3			500 - S - 14 - 20 - 33 - 20			2387 #	
33'-0"	18"	30'-0"	20'-4"	10'	11' - 8 13/16	2	5"	7 1/2"	500 - S - 10 - 20 - 33 - 30				1794 #
		30'-0"		12'	13' - 8 13/16	2			500 - S - 12 - 20 - 33 - 30			1860 #	
		30'-0"		14'	15' - 8 13/16	2			500 - S - 14 - 20 - 33 - 30			2549 #	
43'-0"	24"	20'-0"	20'-4"	10'	11' - 8 13/16	3	5"	7 1/2"	500 - S - 10 - 20 - 43 - 20				2366 #
		20'-0"		12'	13' - 8 13/16	3			500 - S - 12 - 20 - 43 - 20			2464 #	
		20'-0"		14'	15' - 8 13/16	3			500 - S - 14 - 20 - 43 - 20			2563 #	
53'-0"	36"	20'-0"	20'-4"	10'	11' - 8 13/16	4	5"	7 1/2"	500 - S - 10 - 20 - 53 - 20				3012 #
		25'-0"		10'	11' - 8 13/16	3			500 - S - 10 - 20 - 53 - 25			2705 #	
		20'-0"		12'	13' - 8 13/16	4			500 - S - 12 - 20 - 53 - 20			3143 #	
		25'-0"		12'	13' - 8 13/16	3			500 - S - 12 - 20 - 53 - 25			2803 #	
		20'-0"		14'	15' - 8 13/16	4			500 - S - 14 - 20 - 53 - 20			3274 #	
63'-0"	36"	20'-0"	20'-4"	10'	11' - 8 13/16	4	5"	7 1/2"	500 - S - 10 - 20 - 63 - 20				3187 #
		20'-0"		12'	13' - 8 13/16	4			500 - S - 12 - 20 - 63 - 20			3318 #	
		20'-0"		14'	15' - 8 13/16	4			500 - S - 14 - 20 - 63 - 20			3450 #	
		30'-0"		10'	11' - 8 13/16	3			500 - S - 10 - 20 - 63 - 30			2842 #	
		30'-0"		12'	13' - 8 13/16	3			500 - S - 12 - 20 - 63 - 30			2940 #	
78'-0"	54"	25'-0"	20'-4"	10'	11' - 8 13/16	4	5"	7 1/2"	500 - S - 10 - 20 - 78 - 25				3691 #
		25'-0"		12'	13' - 8 13/16	4			500 - S - 12 - 20 - 78 - 25			3822 #	
		25'-0"		14'	15' - 8 13/16	4			500 - S - 14 - 20 - 78 - 25			3953 #	
		20'-0"		10'	11' - 8 13/16	5			500 - S - 10 - 20 - 83 - 20			4009 #	
		20'-0"		12'	13' - 8 13/16	5			500 - S - 12 - 20 - 83 - 20			4173 #	
83'-0"	54"	20'-0"	20'-4"	14'	15' - 8 13/16	5	5"	7 1/2"	500 - S - 14 - 20 - 83 - 20				4337 #
		30'-0"		10'	11' - 8 13/16	4			500 - S - 10 - 20 - 93 - 30			3889 #	
		30'-0"		12'	13' - 8 13/16	4			500 - S - 12 - 20 - 93 - 30			4020 #	
		30'-0"		14'	15' - 8 13/16	4			500 - S - 14 - 20 - 93 - 30			5398 #	
		20'-0"		10'	11' - 8 13/16	6			500 - S - 10 - 20 - 103 - 20			4830 #	
103'-0"	54"	25'-0"	20'-4"	10'	11' - 8 13/16	5	5"	7 1/2"	500 - S - 10 - 20 - 103 - 25				4677 #
		20'-0"		12'	13' - 8 13/16	6			500 - S - 12 - 20 - 103 - 20			5027 #	
		25'-0"		12'	13' - 8 13/16	5			500 - S - 12 - 20 - 103 - 25			4841 #	
		20'-0"		14'	15' - 8 13/16	6			500 - S - 14 - 20 - 103 - 20			5224 #	
		25'-0"		14'	15' - 8 13/16	5			500 - S - 14 - 20 - 103 - 25			5005 #	
123'-0"	63"	30'-0"	20'-4"	10'	11' - 8 13/16	5	5"	7 1/2"	500 - S - 10 - 20 - 123 - 30				4936 #
		30'-0"		12'	13' - 8 13/16	5			500 - S - 12 - 20 - 123 - 30			5100 #	
		30'-0"		14'	15' - 8 13/16	5			500 - S - 14 - 20 - 123 - 30			6823 #	

Price of Crane System includes:

- > Bridge
- > End Trucks
- > Hoist-Trolley
- > Floor Anchor Bolts

Weights & Dimensions are approximate and may change without notice

- > Runways
- > Support Frames
- > Hanger Assemblies
- > Splice Assemblies
- > Festoon Cable Trolleys
- > 4-Cond #14 Flat Cable
- > Festoon Clamps
- > Festoon Stack-up Section

Note: Adequacy of floor to support loads imposed by crane system to be determined by others, 6" nominal floor thickness.

BRACING TO BUILDING IS NOT REQUIRED. ALL SYSTEMS SUITABLE FOR SEISMIC ZONE 4.

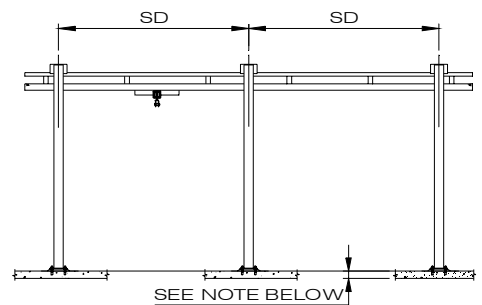
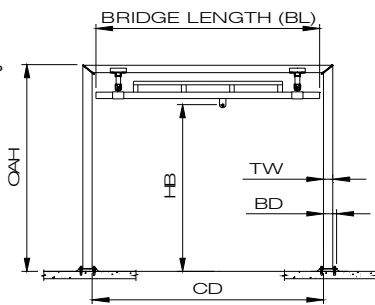
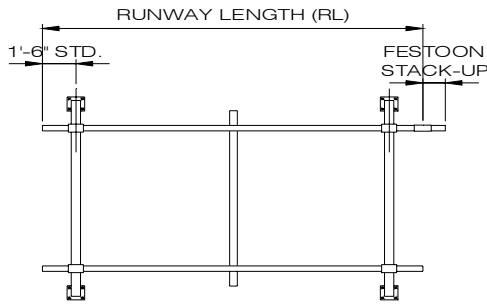
(01-01-07)

9 of 29

**CRANEVEYOR CORP**

**500# CAPACITY**

**BRIDGE LENGTH (BL) 23' - 0"**



RUNWAY LENGTH RL	FS	(Max) SD	CD	HB	OAH	NO. SUPPORT FRAMES	TW	BD	MODEL NUMBER				WEIGHT
									CAP	S	HB	BL RL SD	
23'-0"	12"	20'-0"	23'-4"	10'	11' - 8 13/16	2	5"	7 1/2"	500 - S - 10 - 23 - 23 - 20				1640 #
		20'-0"		12'	13' - 8 13/16	2			500 - S - 12 - 23 - 23 - 20				1705 #
		20'-0"		14'	15' - 8 13/16	2			500 - S - 14 - 23 - 23 - 20				1771 #
28'-0"	18"	25'-0"	23'-4"	10'	11' - 8 13/16	2	5"	7 1/2"	500 - S - 10 - 23 - 28 - 25				1814 #
		25'-0"		12'	13' - 8 13/16	2			500 - S - 12 - 23 - 28 - 25				1879 #
		25'-0"		14'	15' - 8 13/16	2			500 - S - 14 - 23 - 28 - 25				1945 #
33'-0"	18"	20'-0"	23'-4"	10'	11' - 8 13/16	3	5"	7 1/2"	500 - S - 10 - 23 - 33 - 20				2310 #
		20'-0"		12'	13' - 8 13/16	3			500 - S - 12 - 23 - 33 - 20				2408 #
		20'-0"		14'	15' - 8 13/16	3			500 - S - 14 - 23 - 33 - 20				2507 #
33'-0"	18"	30'-0"	23'-4"	10'	11' - 8 13/16	2	5"	7 1/2"	500 - S - 10 - 23 - 33 - 30				1890 #
		30'-0"		12'	13' - 8 13/16	2			500 - S - 12 - 23 - 33 - 30				1955 #
		30'-0"		14'	15' - 8 13/16	2			500 - S - 14 - 23 - 33 - 30				2679 #
43'-0"	24"	20'-0"	23'-4"	10'	11' - 8 13/16	3	5"	7 1/2"	500 - S - 10 - 23 - 43 - 20				2486 #
		20'-0"		12'	13' - 8 13/16	3			500 - S - 12 - 23 - 43 - 20				2584 #
		20'-0"		14'	15' - 8 13/16	3			500 - S - 14 - 23 - 43 - 20				2682 #
53'-0"	36"	20'-0"	23'-4"	10'	11' - 8 13/16	4	5"	7 1/2"	500 - S - 10 - 23 - 53 - 20				3156 #
		25'-0"		10'	11' - 8 13/16	3			500 - S - 10 - 23 - 53 - 25				2824 #
		20'-0"		12'	13' - 8 13/16	4			500 - S - 12 - 23 - 53 - 20				3287 #
		25'-0"		12'	13' - 8 13/16	3			500 - S - 12 - 23 - 53 - 25				2923 #
		20'-0"		14'	15' - 8 13/16	4			500 - S - 14 - 23 - 53 - 20				3418 #
		25'-0"		14'	15' - 8 13/16	3			500 - S - 14 - 23 - 53 - 25				3021 #
63'-0"	36"	20'-0"	23'-4"	10'	11' - 8 13/16	4	5"	7 1/2"	500 - S - 10 - 23 - 63 - 20				3332 #
		20'-0"		12'	13' - 8 13/16	4			500 - S - 12 - 23 - 63 - 20				3463 #
		20'-0"		14'	15' - 8 13/16	4			500 - S - 14 - 23 - 63 - 20				3594 #
63'-0"	36"	30'-0"	23'-4"	10'	11' - 8 13/16	3	5"	7 1/2"	500 - S - 10 - 23 - 63 - 30				2961 #
		30'-0"		12'	13' - 8 13/16	3			500 - S - 12 - 23 - 63 - 30				3060 #
		30'-0"		14'	15' - 8 13/16	3			500 - S - 14 - 23 - 63 - 30				4146 #
78'-0"	54"	25'-0"	23'-4"	10'	11' - 8 13/16	4	5"	7 1/2"	500 - S - 10 - 23 - 78 - 25				3835 #
		25'-0"		12'	13' - 8 13/16	4			500 - S - 12 - 23 - 78 - 25				3966 #
		25'-0"		14'	15' - 8 13/16	4			500 - S - 14 - 23 - 78 - 25				4098 #
83'-0"	54"	20'-0"	23'-4"	10'	11' - 8 13/16	5	5"	7 1/2"	500 - S - 10 - 23 - 83 - 20				4178 #
		20'-0"		12'	13' - 8 13/16	5			500 - S - 12 - 23 - 83 - 20				4342 #
		20'-0"		14'	15' - 8 13/16	5			500 - S - 14 - 23 - 83 - 20				4506 #
93'-0"	54"	30'-0"	23'-4"	10'	11' - 8 13/16	4	5"	7 1/2"	500 - S - 10 - 23 - 93 - 30				4033 #
		30'-0"		12'	13' - 8 13/16	4			500 - S - 12 - 23 - 93 - 30				4164 #
		30'-0"		14'	15' - 8 13/16	4			500 - S - 14 - 23 - 93 - 30				5612 #
103'-0"	54"	20'-0"	23'-4"	10'	11' - 8 13/16	6	5"	7 1/2"	500 - S - 10 - 23 - 103 - 20				5024 #
		25'-0"		10'	11' - 8 13/16	5			500 - S - 10 - 23 - 103 - 25				4846 #
		20'-0"		12'	13' - 8 13/16	6			500 - S - 12 - 23 - 103 - 20				5221 #
		25'-0"		12'	13' - 8 13/16	5			500 - S - 12 - 23 - 103 - 25				5010 #
		20'-0"		14'	15' - 8 13/16	6			500 - S - 14 - 23 - 103 - 20				5417 #
		25'-0"		14'	15' - 8 13/16	5			500 - S - 14 - 23 - 103 - 25				5174 #
123'-0"	63"	30'-0"	23'-4"	10'	11' - 8 13/16	5	5"	7 1/2"	500 - S - 10 - 23 - 123 - 30				5105 #
		30'-0"		12'	13' - 8 13/16	5			500 - S - 12 - 23 - 123 - 30				5269 #
		30'-0"		14'	15' - 8 13/16	5			500 - S - 14 - 23 - 123 - 30				7079 #

Price of Crane System includes:

- > Bridge
- > End Trucks
- > Hoist-Trolley
- > Floor Anchor Bolts

Weights & Dimensions are approximate and may change without notice

- > Runways
- > Support Frames
- > Hanger Assemblies
- > Splice Assemblies
- > Festoon Cable Trolleys
- > 4-Cond #14 Flat Cable
- > Festoon Clamps
- > Festoon Stack-up Section

Note: Adequacy of floor to support loads imposed by crane system to be determined by others, 6" nominal floor thickness.

BRACING TO BUILDING IS NOT REQUIRED. ALL SYSTEMS SUITABLE FOR SEISMIC ZONE 4.

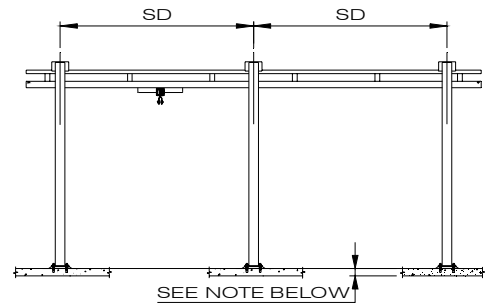
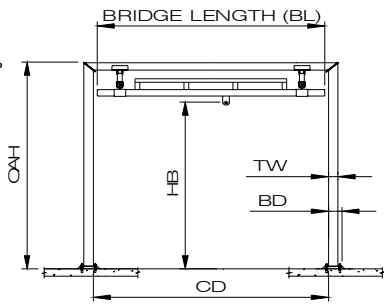
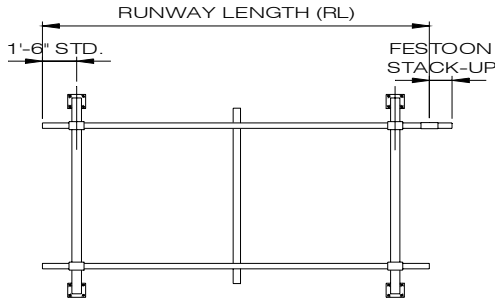
(01-01-07)

10 of 29

**CRANEVEYOR CORP**

**500# CAPACITY**

**BRIDGE LENGTH (BL) 28' - 0"**



RUNWAY LENGTH RL	FS	(Max) SD	CD	HB	OAH	NO. SUPPORT FRAMES	TW	BD	MODEL NUMBER					WEIGHT
									CAP	S	HB	BL	RL	
23'-0	12"	20'-0	28'-4	10'	11' - 11 1/16	2	5"	7 1/2"	500 - S - 10 - 28 - 23 - 20					1958 #
		20'-0		12'	13' - 11 1/16	2			500 - S - 12 - 28 - 23 - 20				2023 #	
		20'-0		14'	15' - 11 1/16	2			500 - S - 14 - 28 - 23 - 20				2805 #	
28'-0	18"	25'-0	28'-4	10'	11' - 11 1/16	2	5"	7 1/2"	500 - S - 10 - 28 - 28 - 25					2132 #
		25'-0		12'	13' - 11 1/16	2			500 - S - 12 - 28 - 28 - 25				2197 #	
		25'-0		14'	15' - 11 1/16	2			500 - S - 14 - 28 - 28 - 25				2979 #	
33'-0	18"	20'-0	28'-4	10'	11' - 11 1/16	3	5"	7 1/2"	500 - S - 10 - 28 - 33 - 20					2669 #
		20'-0		12'	13' - 11 1/16	3			500 - S - 12 - 28 - 33 - 20				2767 #	
		20'-0		14'	15' - 11 1/16	3			500 - S - 14 - 28 - 33 - 20				3940 #	
33'-0	18"	30'-0	28'-4	10'	11' - 11 1/16	2	5"	7 1/2"	500 - S - 10 - 28 - 33 - 30					2208 #
		30'-0		12'	13' - 11 1/16	2			500 - S - 12 - 28 - 33 - 30				2273 #	
		30'-0		14'	15' - 11 1/16	2			500 - S - 14 - 28 - 33 - 30				3055 #	
43'-0	24"	20'-0	28'-4	10'	11' - 11 1/16	3	5"	7 1/2"	500 - S - 10 - 28 - 43 - 20					2845 #
		20'-0		12'	13' - 11 1/16	3			500 - S - 12 - 28 - 43 - 20				2943 #	
		20'-0		14'	15' - 11 1/16	3			500 - S - 14 - 28 - 43 - 20				4116 #	
53'-0	36"	20'-0	28'-4	10'	11' - 11 1/16	4	5"	7 1/2"	500 - S - 10 - 28 - 53 - 20					3556 #
		25'-0		10'	11' - 11 1/16	3			500 - S - 10 - 28 - 53 - 25				3183 #	
		20'-0		12'	13' - 11 1/16	4			500 - S - 12 - 28 - 53 - 20				3687 #	
		25'-0		12'	13' - 11 1/16	3			500 - S - 12 - 28 - 53 - 25				3282 #	
		20'-0		14'	15' - 11 1/16	4			500 - S - 14 - 28 - 53 - 20				5251 #	
63'-0	36"	20'-0	28'-4	10'	11' - 11 1/16	4	5"	7 1/2"	500 - S - 10 - 28 - 63 - 20					3732 #
		20'-0		12'	13' - 11 1/16	4			500 - S - 12 - 28 - 63 - 20				3863 #	
		20'-0		14'	15' - 11 1/16	4			500 - S - 14 - 28 - 63 - 20				5427 #	
		30'-0		10'	11' - 11 1/16	3			500 - S - 10 - 28 - 63 - 30				3320 #	
		30'-0		12'	13' - 11 1/16	3			500 - S - 12 - 28 - 63 - 30				3419 #	
78'-0	54"	25'-0	28'-4	10'	11' - 11 1/16	4	5"	7 1/2"	500 - S - 10 - 28 - 78 - 25					4235 #
		25'-0		12'	13' - 11 1/16	4			500 - S - 12 - 28 - 78 - 25				4366 #	
		25'-0		14'	15' - 11 1/16	4			500 - S - 14 - 28 - 78 - 25				5930 #	
83'-0	54"	20'-0	28'-4	10'	11' - 11 1/16	5	5"	7 1/2"	500 - S - 10 - 28 - 83 - 20					4619 #
		20'-0		12'	13' - 11 1/16	5			500 - S - 12 - 28 - 83 - 20				4783 #	
		20'-0		14'	15' - 11 1/16	5			500 - S - 14 - 28 - 83 - 20				6737 #	
93'-0	54"	30'-0	28'-4	10'	11' - 11 1/16	4	5"	7 1/2"	500 - S - 10 - 28 - 93 - 30					4433 #
		30'-0		12'	13' - 11 1/16	4			500 - S - 12 - 28 - 93 - 30				4564 #	
		30'-0		14'	11' - 11 1/16	4			500 - S - 14 - 28 - 93 - 30				6128 #	
103'-0	54"	20'-0	28'-4	10'	11' - 11 1/16	6	5"	7 1/2"	500 - S - 10 - 28 - 103 - 20					5506 #
		25'-0		10'	11' - 11 1/16	5			500 - S - 10 - 28 - 103 - 25				5287 #	
		20'-0		12'	13' - 11 1/16	6			500 - S - 12 - 28 - 103 - 20				5703 #	
		25'-0		12'	13' - 11 1/16	5			500 - S - 12 - 28 - 103 - 25				5451 #	
		20'-0		14'	15' - 11 1/16	6			500 - S - 14 - 28 - 103 - 20				8048 #	
123'-0	63"	30'-0	28'-4	10'	11' - 11 1/16	5	5"	7 1/2"	500 - S - 10 - 28 - 123 - 30					5546 #
		30'-0		12'	13' - 11 1/16	5			500 - S - 12 - 28 - 123 - 30				5710 #	
		30'-0		14'	15' - 11 1/16	5			500 - S - 14 - 28 - 123 - 30				7665 #	

Price of Crane System includes:

- > Bridge
- > End Trucks
- > Hoist-Trolley
- > Floor Anchor Bolts

Weights & Dimensions are approximate and may change without notice

- > Runways
- > Support Frames
- > Hanger Assemblies
- > Splice Assemblies
- > Festoon Cable Trolleys
- > 4-Cond #14 Flat Cable
- > Festoon Clamps
- > Festoon Stack-up Section

Note: Adequacy of floor to support loads imposed by crane system to be determined by others, 6" nominal floor thickness.

BRACING TO BUILDING IS NOT REQUIRED. ALL SYSTEMS SUITABLE FOR SEISMIC ZONE 4.

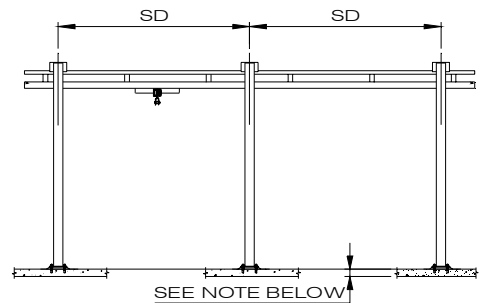
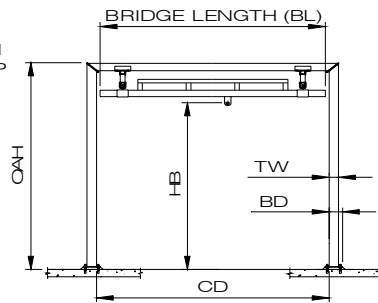
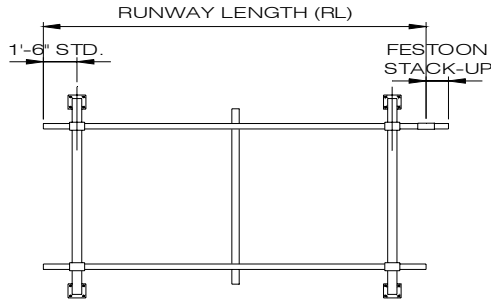
(01-01-07)

11 of 29

**CRANEVEYOR CORP**

**500# CAPACITY**

**BRIDGE LENGTH (BL) 34' - 0"**



RUNWAY LENGTH RL	FS	(Max) SD	CD	HB	OAH	NO. SUPPORT FRAMES	TW	BD	MODEL NUMBER					WEIGHT
									CAP	S	HB	BL	RL	
28'-0	18"	25'-0	34'-4	10'	12'-0 1/16	2	6"	8"	500-S-10-34-28-25					2994 #
		25'-0		12'	14'-0 1/16	2			500-S-12-34-28-25				3106 #	
		25'-0		14'	16'-0 1/16	2			500-S-14-34-28-25				3218 #	
33'-0	18"	20'-0	34'-4	10'	12'-0 1/16	3	6"	8"	500-S-10-34-33-20					3927 #
		20'-0		12'	14'-0 1/16	3			500-S-12-34-33-20				4095 #	
		20'-0		14'	16'-0 1/16	3			500-S-14-34-33-20				4263 #	
33'-0	18"	30'-0	34'-4	10'	12'-0 1/16	2	6"	8"	500-S-10-34-33-30					3070 #
		30'-0		12'	14'-0 1/16	2			500-S-12-34-33-30				3182 #	
		30'-0		14'	16'-0 1/16	2			500-S-14-34-33-30				3294 #	
43'-0	24"	20'-0	34'-4	10'	12'-0 1/16	3	6"	8"	500-S-10-34-43-20					4103 #
		20'-0		12'	14'-0 1/16	3			500-S-12-34-43-20				4271 #	
		20'-0		14'	16'-0 1/16	3			500-S-14-34-43-20				4439 #	
53'-0	36"	20'-0	34'-4	10'	12'-0 1/16	4	6"	8"	500-S-10-34-53-20					5210 #
		25'-0		10'	12'-0 1/16	3			500-S-10-34-53-25				4442 #	
		20'-0		12'	14'-0 1/16	4			500-S-12-34-53-20				5434 #	
		25'-0		12'	14'-0 1/16	3			500-S-12-34-53-25				4610 #	
		20'-0		14'	16'-0 1/16	4			500-S-14-34-53-20				5658 #	
		25'-0		14'	16'-0 1/16	3			500-S-14-34-53-25				4778 #	
63'-0	36"	20'-0	34'-4	10'	12'-0 1/16	4	6"	8"	500-S-10-34-63-20					5386 #
		20'-0		12'	14'-0 1/16	4			500-S-12-34-63-20				5610 #	
		20'-0		14'	16'-0 1/16	4			500-S-14-34-63-20				5834 #	
63'-0	36"	30'-0	34'-4	10'	12'-0 1/16	3	6"	8"	500-S-10-34-63-30					4579 #
		30'-0		12'	14'-0 1/16	3			500-S-12-34-63-30				4747 #	
		30'-0		14'	16'-0 1/16	3			500-S-14-34-63-30				4915 #	
78'-0	54"	25'-0	34'-4	10'	12'-0 1/16	4	6"	8"	500-S-10-34-78-25					5889 #
		25'-0		12'	14'-0 1/16	4			500-S-12-34-78-25				6113 #	
		25'-0		14'	16'-0 1/16	4			500-S-14-34-78-25				6337 #	
83'-0	54"	20'-0	34'-4	10'	12'-0 1/16	5	6"	8"	500-S-10-34-83-20					6668 #
		20'-0		12'	14'-0 1/16	5			500-S-12-34-83-20				6948 #	
		20'-0		14'	16'-0 1/16	5			500-S-14-34-83-20				7228 #	
93'-0	54"	30'-0	34'-4	10'	12'-0 1/16	4	6"	8"	500-S-10-34-93-30					6087 #
		30'-0		12'	14'-0 1/16	4			500-S-12-34-93-30				6311 #	
		30'-0		14'	16'-0 1/16	4			500-S-14-34-93-30				6535 #	
103'-0	54"	20'-0	34'-4	10'	12'-0 1/16	6	6"	8"	500-S-10-34-103-20					7951 #
		25'-0		10'	12'-0 1/16	5			500-S-10-34-103-25				7337 #	
		20'-0		12'	14'-0 1/16	6			500-S-12-34-103-20				8287 #	
		25'-0		12'	14'-0 1/16	5			500-S-12-34-103-25				7617 #	
		20'-0		14'	16'-0 1/16	6			500-S-14-34-103-20				8623 #	
		25'-0		14'	16'-0 1/16	5			500-S-14-34-103-25				7897 #	
123'-0	63"	30'-0	34'-4	10'	12'-0 1/16	5	6"	8"	500-S-10-34-123-30					7596 #
		30'-0		12'	14'-0 1/16	5			500-S-12-34-123-30				7876 #	
		30'-0		14'	16'-0 1/16	5			500-S-14-34-123-30				8156 #	

Price of Crane System includes:

- > Bridge
- > End Trucks
- > Hoist-Trolley
- > Floor Anchor Bolts

Weights & Dimensions are approximate and may change without notice

- > Runways
- > Support Frames
- > Hanger Assemblies
- > Splice Assemblies
- > Festoon Cable Trolleys
- > 4-Cond #14 Flat Cable
- > Festoon Clamps
- > Festoon Stack-up Section

Note: Adequacy of floor to support loads imposed by crane system to be determined by others, 6" nominal floor thickness.

BRACING TO BUILDING IS NOT REQUIRED. ALL SYSTEMS SUITABLE FOR SEISMIC ZONE 4.

(01-01-07)

12 of 29